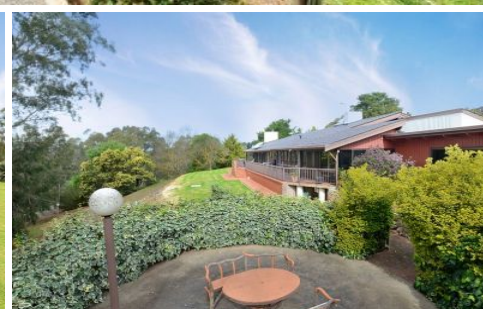


MAGAIN



280 Dashwood Gully Road KANGARILLA SA

6 🏠 4 🚗 10 🚗

Please contact David Hams for viewing times.

A truly rare and unique opportunity to secure one of the largest, and most impressive properties in the area. ?Sharondon Park? offers approximately 260 acres of land with an impressive combination of a number of fenced paddocks ideal for horses and approximately 60 acres of natural scrub land. There are multiple larger paddocks that are well suited to run cattle or sheep, all with water accessibility. There are five dams on the property, with the largest offering a 19,100KL water licence, and a bore that comes complete with a 3-phase pump, together with four separate concrete rain water tanks, this boasts a massive holding capacity of approximately 110,000g (500,000ltrs).

Type : Acreage/Semi-Rural
Land Size : 1054000 sqm
View : <https://www.magain.com.au/property/280-dashwood-gully-road-kangarilla-sa/8433606>



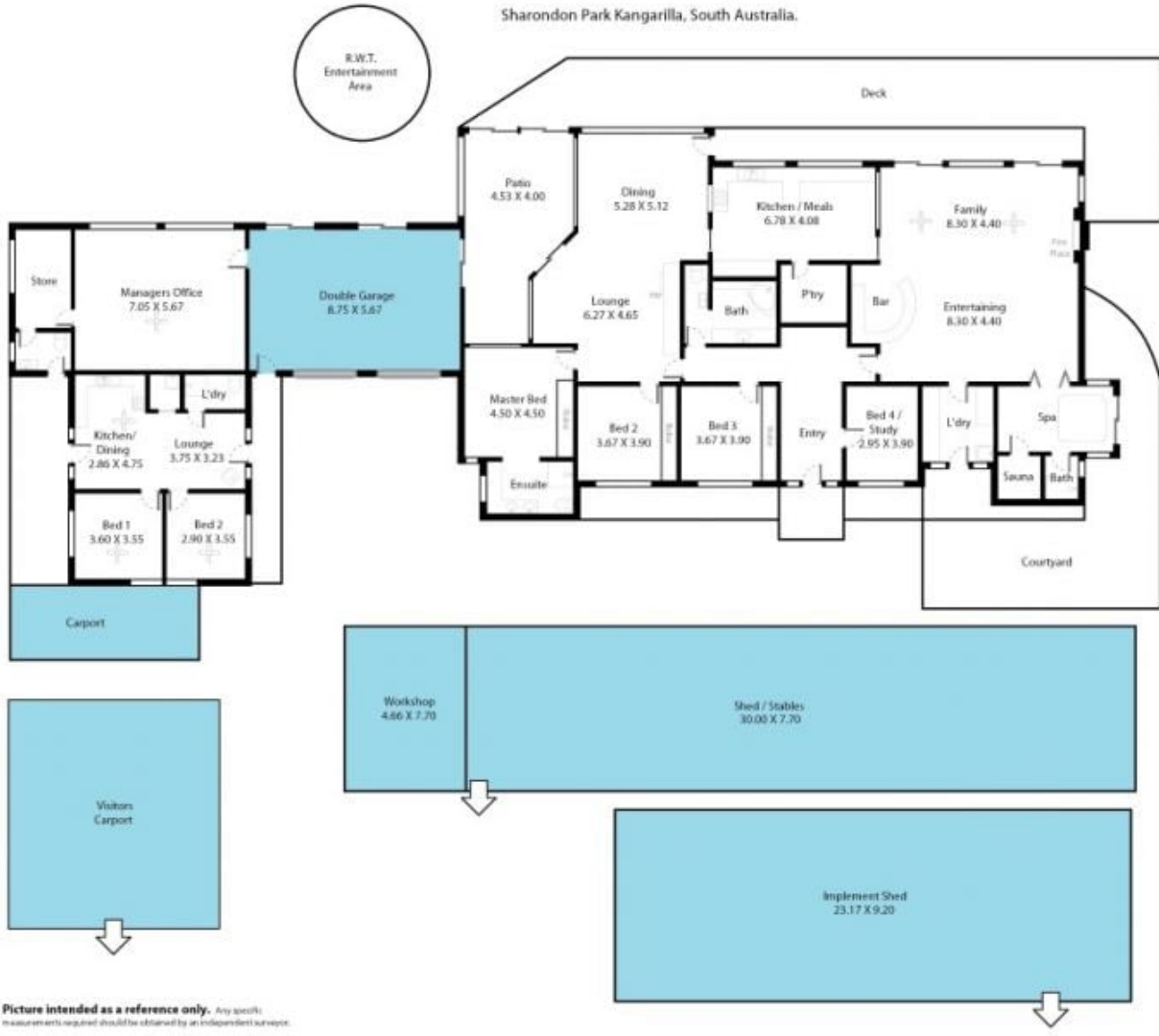
David Hams
08 8366 2230

[For full version visit the website](https://www.magain.com.au)

<https://www.magain.com.au>
Magain Real Estate

Shop 60, Seaford Central Shopping Centre, Commercial Road
08 8366 2230

Sharondon Park Kangarilla, South Australia.



Picture intended as a reference only. Any specific measurements required should be obtained by an independent surveyor.