

MAGAIN



17 Epsilon Close WOODCROFT SA

4 2 6

Sited in a peaceful and picturesque cul-de-sac in ever-popular Glenloth Estate, this excellent residence really is the complete package for you and your family.

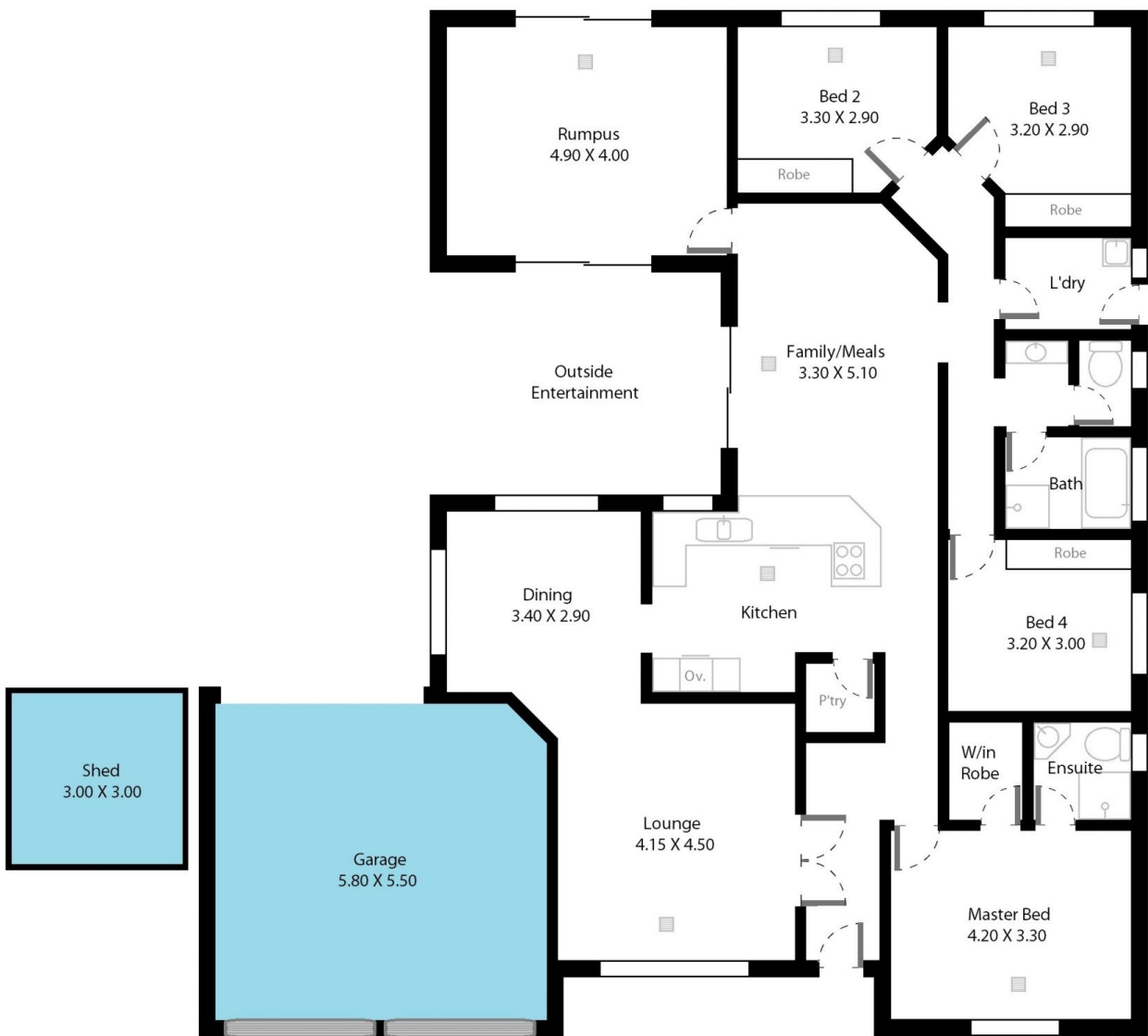
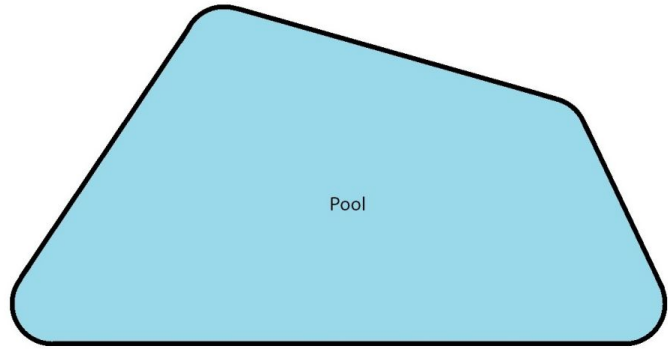
A grand frontage and circular driveway set the scene for a home that is superbly presented inside and out and with a delightful floorplan of 200sqm, plus solar heated / salt-chlorinated inground swimming pool and all-weather entertaining - you cannot fail to be impressed!

Featuring four bedrooms (all with robes, the very generous master suite with ensuite & walk-in), the home also offers formal living and dining rooms, casual meals and a wonderful family room with direct access onto both pool and entertaining areas.

[For full version visit the website](https://www.magain.com.au/property/17-epsilon-close-woodcroft-sa/8433692)

Type : House
Building Size : 22 sqm
Land Size : 743 sqm
View : <https://www.magain.com.au/property/17-epsilon-close-woodcroft-sa/8433692>

17 Epsilon Close Woodcroft, South Australia.



Picture intended as a reference only. Any specific measurements required should be obtained by an independent surveyor.