

MAGAIN



12 Grantley Avenue VICTOR HARBOR SA

5 1 2

Positioned within a short stroll to the impressive foreshore that looks across the bay to granite island, great parks & playgrounds and easy access to the Victor Harbor township, with great shops, cafes, restaurants and so much more.

This circa 1930 Bungalow is private, and is nestled in behind a secure front fence and is set on a generous 844m² allotment.

This property offers a fantastic buying opportunity for a range of buyers including investors, young families, 1st time buyers and those looking for a great getaway/holiday home in a fantastic location.

The front patio has been enclosed and divided to create separate rooms. The front door opens into the spacious

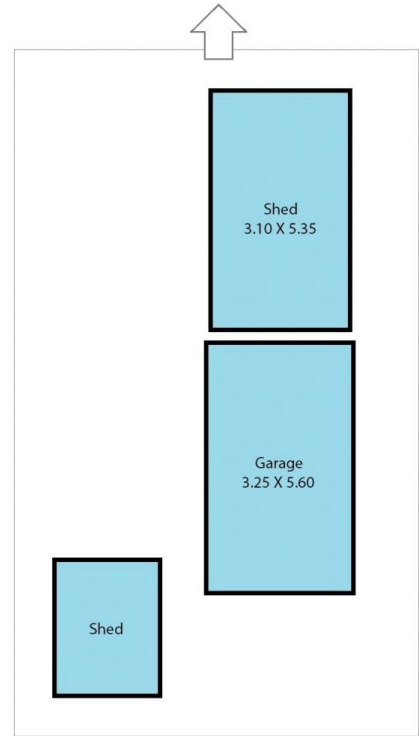
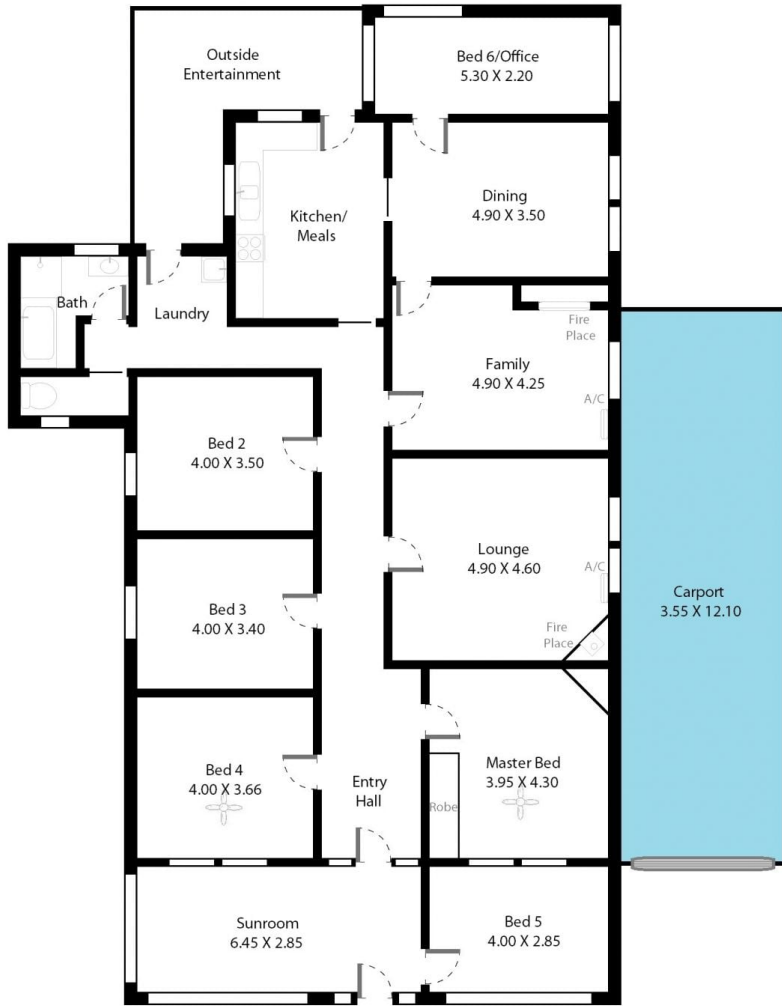
Type : House
Land Size : 844 sqm
View : <https://www.magain.com.au/property/12-grantley-avenue-victor-harbor-sa/8433696>



David Hams
08 8366 2230

[For full version visit the website](https://www.magain.com.au)

12 Grantley Avenue Victor Harbor, South Australia.



Picture intended as a reference only. Any specific measurements required should be obtained by an independent surveyor.