

MAGAIN



5/54 Wheatsheaf Road MORPHETT VALE SA

2  **1**  **1** 

Contact David Hams for more information or to arrange an inspection.

Set at the rear of a quiet and private group, this property presents a great opportunity for a range of buyers, including first home buyers, investors and downsizers. Featuring 2 bedrooms and a private rear yard, this property wont last long and an inspection is a must.

Entering the unit, you are greeted by the lounge room, with a large picture window allowing plenty of natural light in. It is overlooked by the kitchen, which comes equipped with a breakfast bar and plenty of cupboard space, and an air conditioner for year round comfort.

Type : Unit

View : <https://www.magain.com.au/property/554-wheatsheaf-road-morphett-vale-sa/8433724>

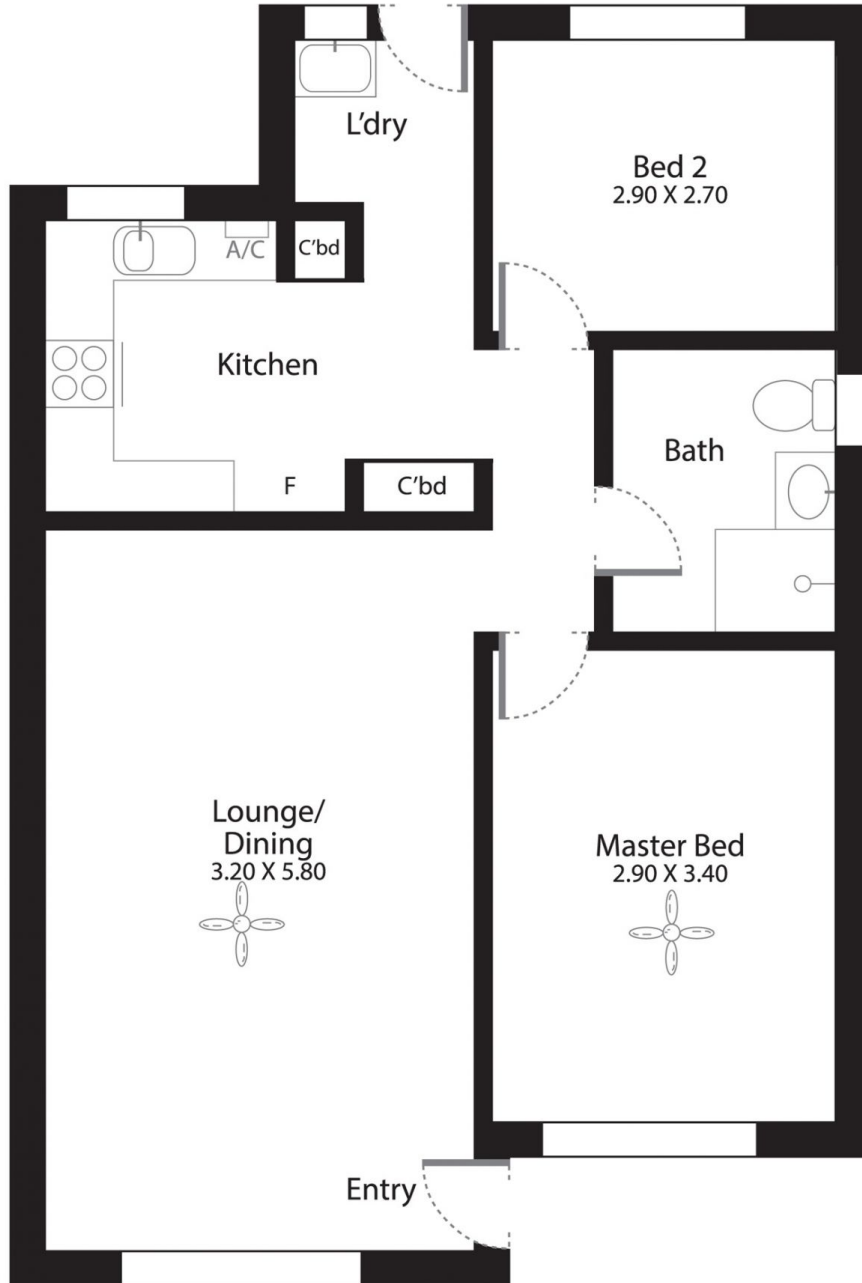


David Hams
08 8366 2230

[For full version visit the website](https://www.magain.com.au)

<https://www.magain.com.au>
Magain Real Estate

Shop 60, Seaford Central Shopping Centre, Commercial Road
08 8366 2230



Picture intended as a reference only. Any specific measurements required should be obtained by an independent surveyor.