

MAGAIN



30 Leitch Avenue PORT NOARLUNGA SA

4 2 2

Contact David Hams for more information.

Built in 2013, this feature packed 'Sarah home' is located in a great position. Within easy access to great shopping options, either on Beach Road, or at the Colonnades Shopping complex, public transport, nearby sporting facilities, some of the states best beaches and much more.

The home sits proudly on a low maintenance, courtyard allotment that offers secure off street parking with very high clearance, ideal for boat or caravan storage if required. The property is also securely fenced and has a coded front gate for additional security/privacy.

The downstairs section of the home is where you'll find 3 of

[For full version visit the website](https://www.magain.com.au/property/30-leitch-avenue-port-noarlunga-sa/8433752)

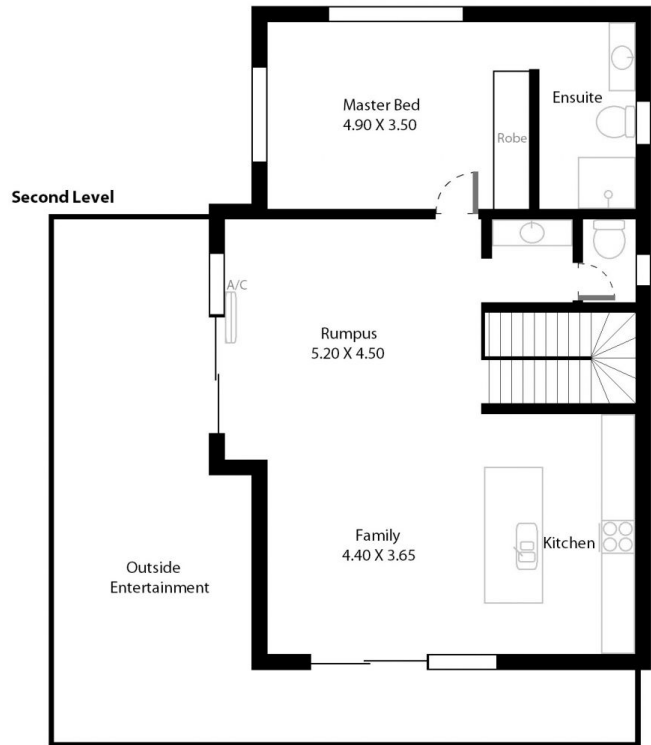
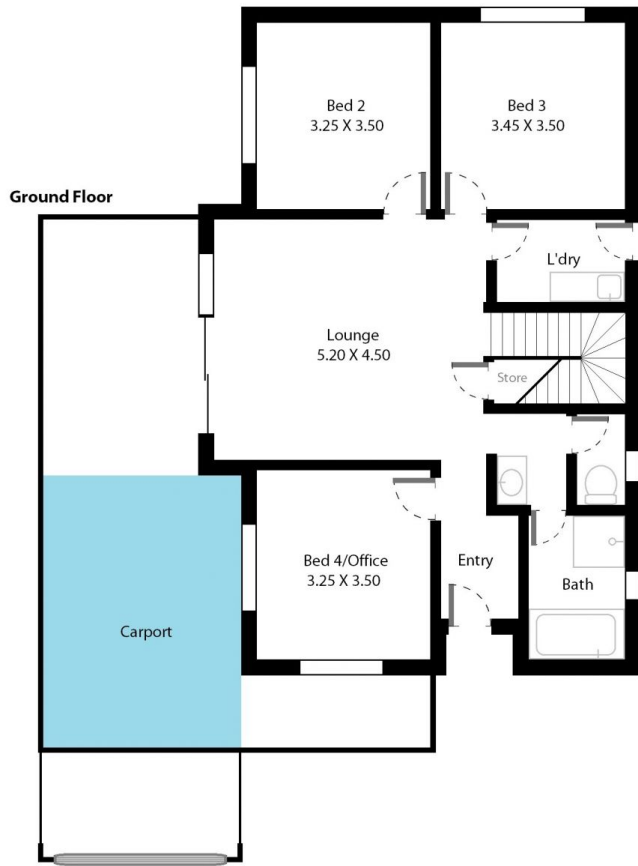
Type : House

View : <https://www.magain.com.au/property/30-leitch-avenue-port-noarlunga-sa/8433752>



David Hams
08 8366 2230

30 Leitch Avenue Port Noarlunga, South Australia.



Picture intended as a reference only. Any specific measurements should be obtained by an independent surveyor.