

MAGAIN



1 Ona Court ABERFOYLE PARK SA

3 1 2

Please contact Jemma Turner for more information or to view the property.

1 Ona Court is a generous 670sqm flat corner allotment, in the sought after suburb of Aberfoyle Park. Located only walking distance away from the local dog park, skate park, play ground, walking track and public transport, and only a short drive to all the amenities of the Hub Shopping Centre, this neat package is one to be considered by any first home buyer, property investor, down sizer, couple, single or small/young family.

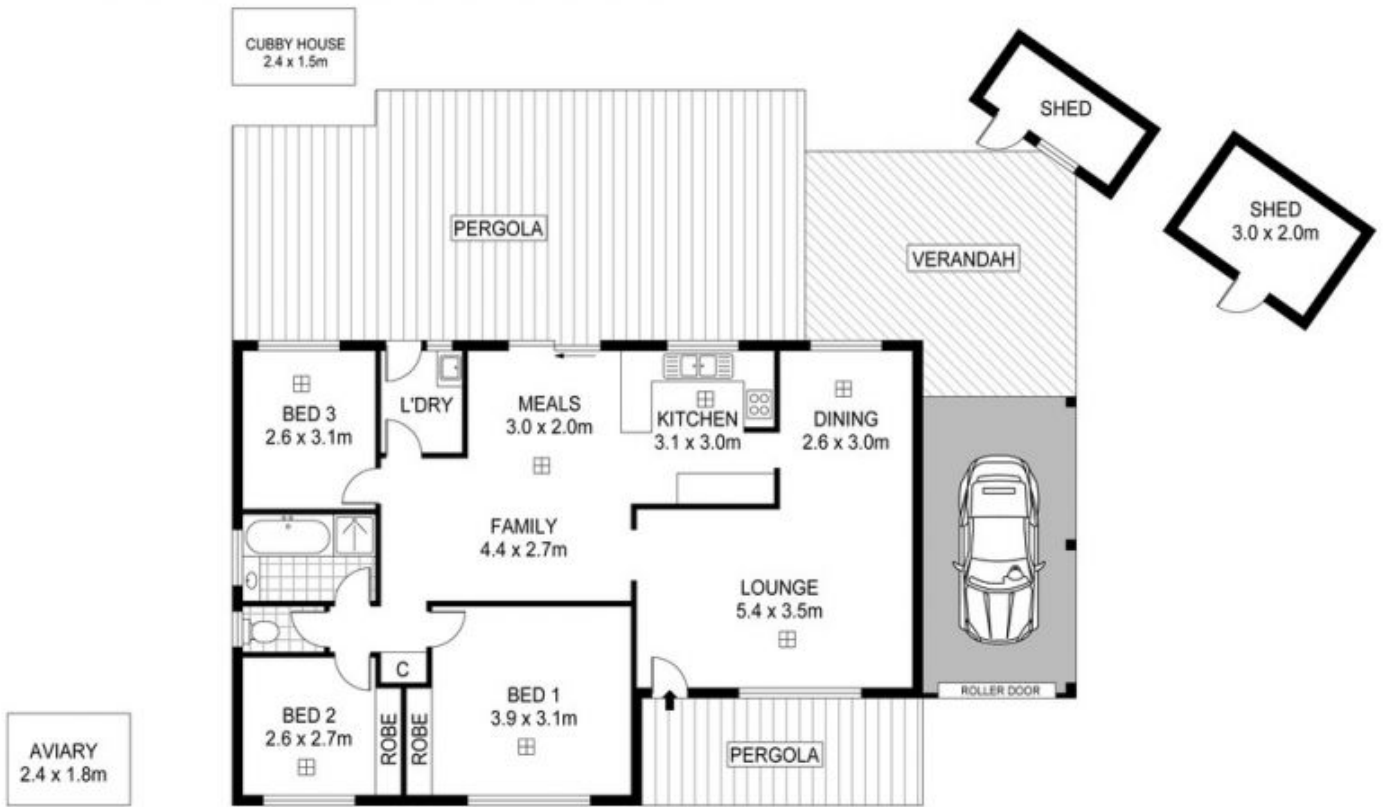
The lovely three bedroom home itself has been well maintained, with new carpets in the front lounge room as well as a fresh coat of paint. The three great sized

[For full version visit the website](https://www.magain.com.au/property/1-on-court-aberfoyle-park-sa/8433754)

Type : House
Building Size : 12 sqm
Land Size : 670 sqm
View : <https://www.magain.com.au/property/1-on-court-aberfoyle-park-sa/8433754>



Jemma Turner
08 8366 2230



Scale in metres. Indicative only. Dimensions are approximate. All information contained herein is gathered from sources we believe to be reliable. However we cannot guarantee its accuracy and interested persons should rely on their own enquiries.

INT : 102m²

1 Ona Court, Aberfoyle Park