

MAGAIN



7 Argyle Close ABERFOYLE PARK SA

4 2 1

Contact David Hams for more information, or to arrange an inspection.

Positioned at the end of a very quiet and private cul-de-sac, this ultra impressive home is one that you will not want to miss!

When you walk through this amazing home, you're not only impressed by the fantastic layout, or the spectacular raised ceilings, the number of separate living areas, or even the stunning views. It's the soul of the home that is truly captivating. You will imagine yourself sipping your morning coffee on your incredible back deck, enjoying the peace and serenity that comes with living amongst the treetops, experiencing the sounds and sights of nature. Or

Type : House
Land Size : 990 sqm
View : <https://www.magain.com.au/property/7-argyle-close-aberfoyle-park-sa/8433760>



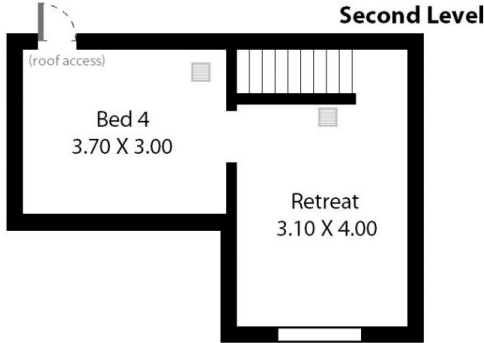
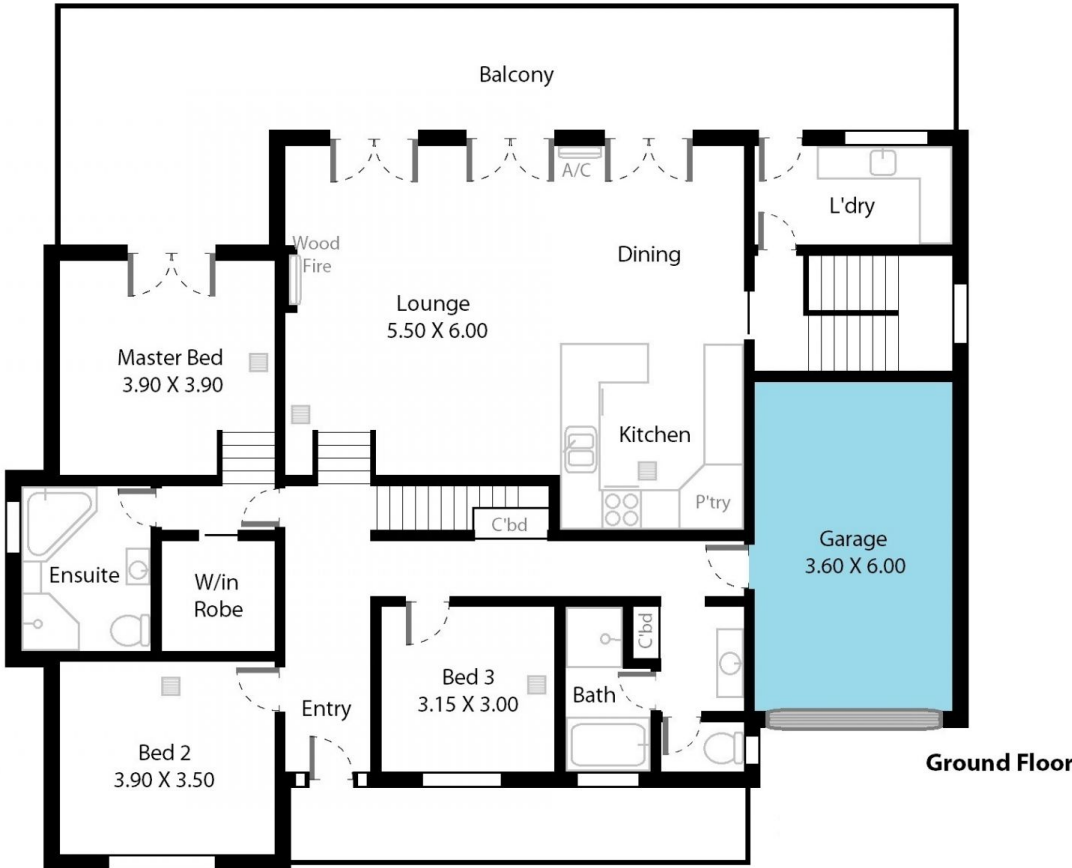
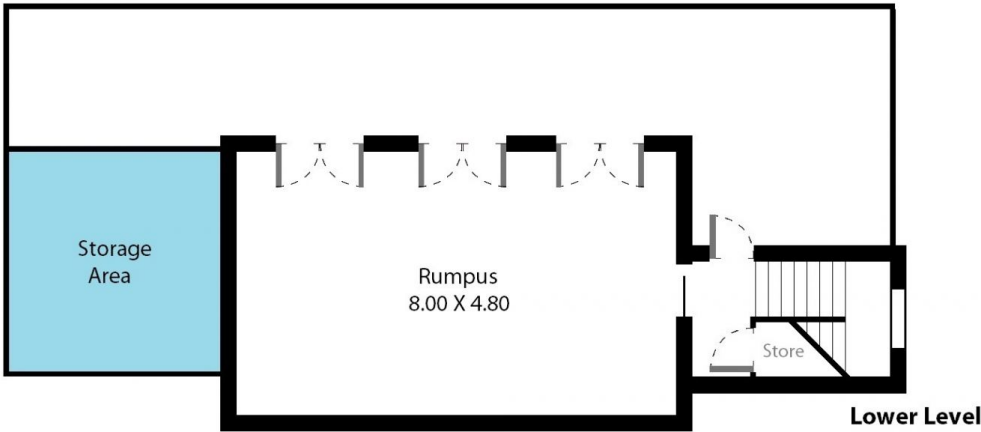
David Hams
08 8366 2230

[For full version visit the website](https://www.magain.com.au)

<https://www.magain.com.au>
Magain Real Estate

Shop 60, Seaford Central Shopping Centre, Commercial Road
08 8366 2230

7 Argyle Close Aberfoyle Park, South Australia.



Picture intended as a reference only. Any specific measurements required should be obtained by an independent surveyor.