

# MAGAIN



3 Leech Avenue MORPHETT VALE SA

3  1  2 

Contact Denzil Cheesley for more information.

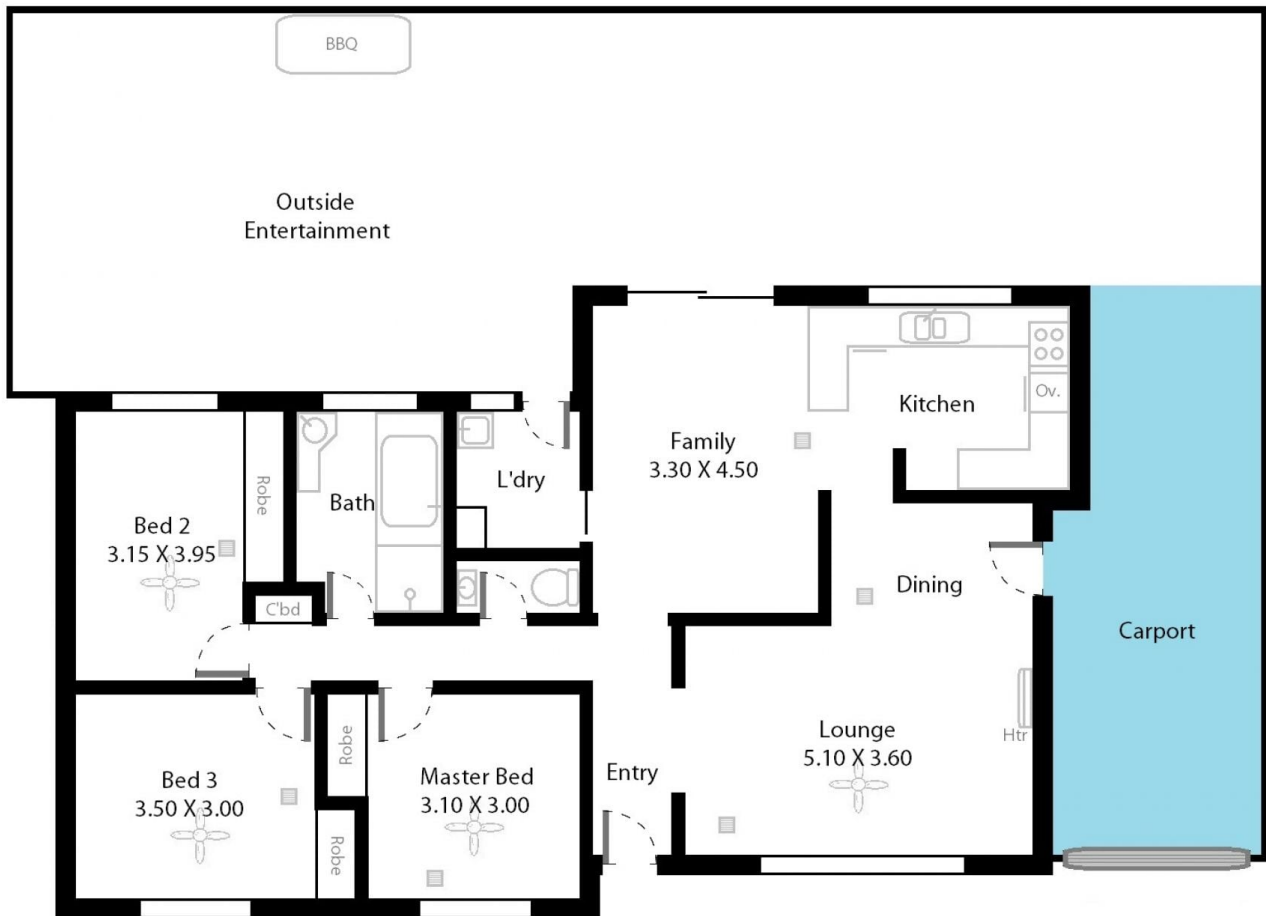
An absolute winner for the first homebuyers, investors or downsizers, this fine home is wonderfully positioned in a peaceful and proud cul-de-sac, with excellent kerbside appeal and fabulous entertaining - just yearning for someone's personal touches.

Internally, a conventional floorplan of three bedrooms includes a spacious master with robes, generous lounge / dine with brand new floating floors. From the spacious kitchen and casual meals area, slide doors lead to grand all-weather entertaining and grounds perfect for outdoor living and get-togethers. Lawns, toolshed and workshop-come-rumpus complete versatile grounds.

[For full version visit the website](https://www.magain.com.au/property/3-leech-avenue-morphett-vale-sa/8433766)

**Type** : House  
**Building Size** : 13 sqm  
**Land Size** : 571 sqm  
**View** : <https://www.magain.com.au/property/3-leech-avenue-morphett-vale-sa/8433766>

3 Leech Avenue Morphett Vale, South Australia.



**Picture intended as a reference only.** Any specific measurements required should be obtained by an independent surveyor.