

# MAGAIN



We want to keep our beautiful state,  
and our vendors' homes safe.  
So please wear a mask at  
our open inspections.

**magain**  
REAL ESTATE



## 43 Chilcomb Drive HUNTFIELD HEIGHTS SA

4 2 6

Please contact Cameron Bowes to discuss a viewing time.

Here is a property that is sure to impress. Situated on a large 700sqm corner block is this spacious two story home, perfect for the growing family.

If you are someone that needs extra car parking space then look no further. The property features a massive powered double shed, garaging and access for a boat or caravan. There is so much space for working on cars, entertaining and for the kids and pets to run around and enjoy.

As you enter the property, you are sure to fall in love with the homely and welcoming feel. There lounge room located at the front of the home is the perfect place to relax after a

**Type** : House  
**Building Size** : 21 sqm  
**Land Size** : 700 sqm  
**View** : <https://www.magain.com.au/property/43-chilcomb-drive-huntfield-heights-sa/8433874>

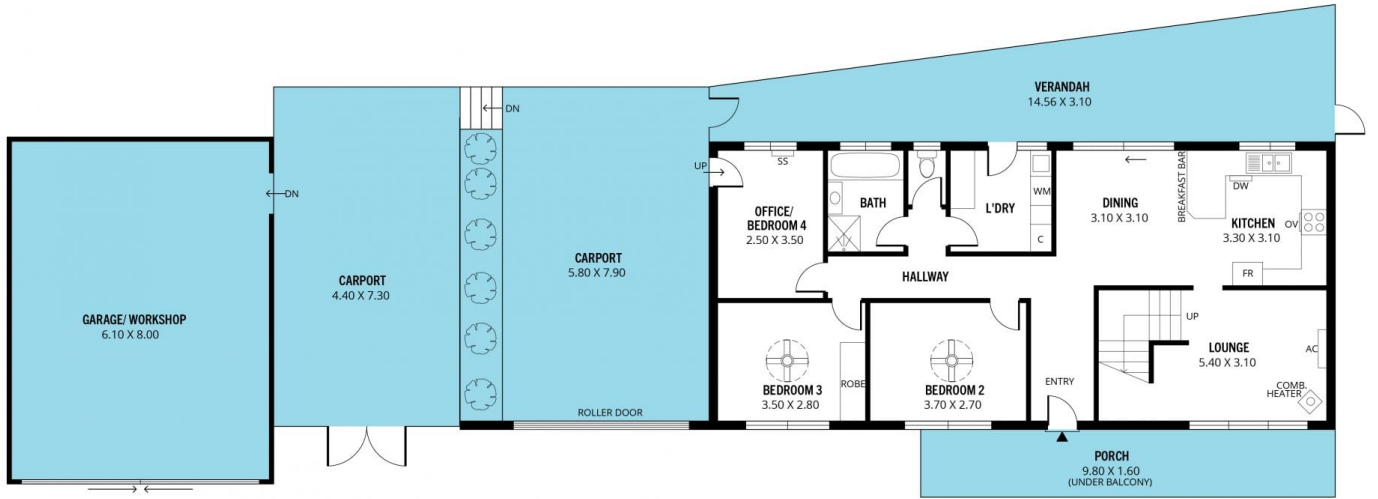
[For full version visit the website](https://www.magain.com.au)

<https://www.magain.com.au>  
Magain Real Estate

Shop 60, Seaford Central Shopping Centre, Commercial Road  
08 8366 2230



FIRST FLOOR



GROUND FLOOR

Scale in metres. This drawing is for illustration purposes only. All measurements are approximate and details intended to be relied upon should be independently verified.

Produced by The Fotobase Group