

MAGAIN



15 Expedition Boulevard MEADOWS SA

4 3 5

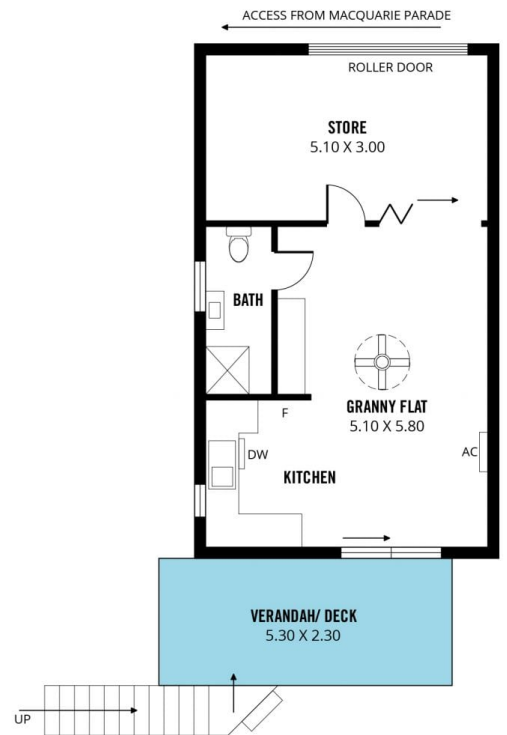
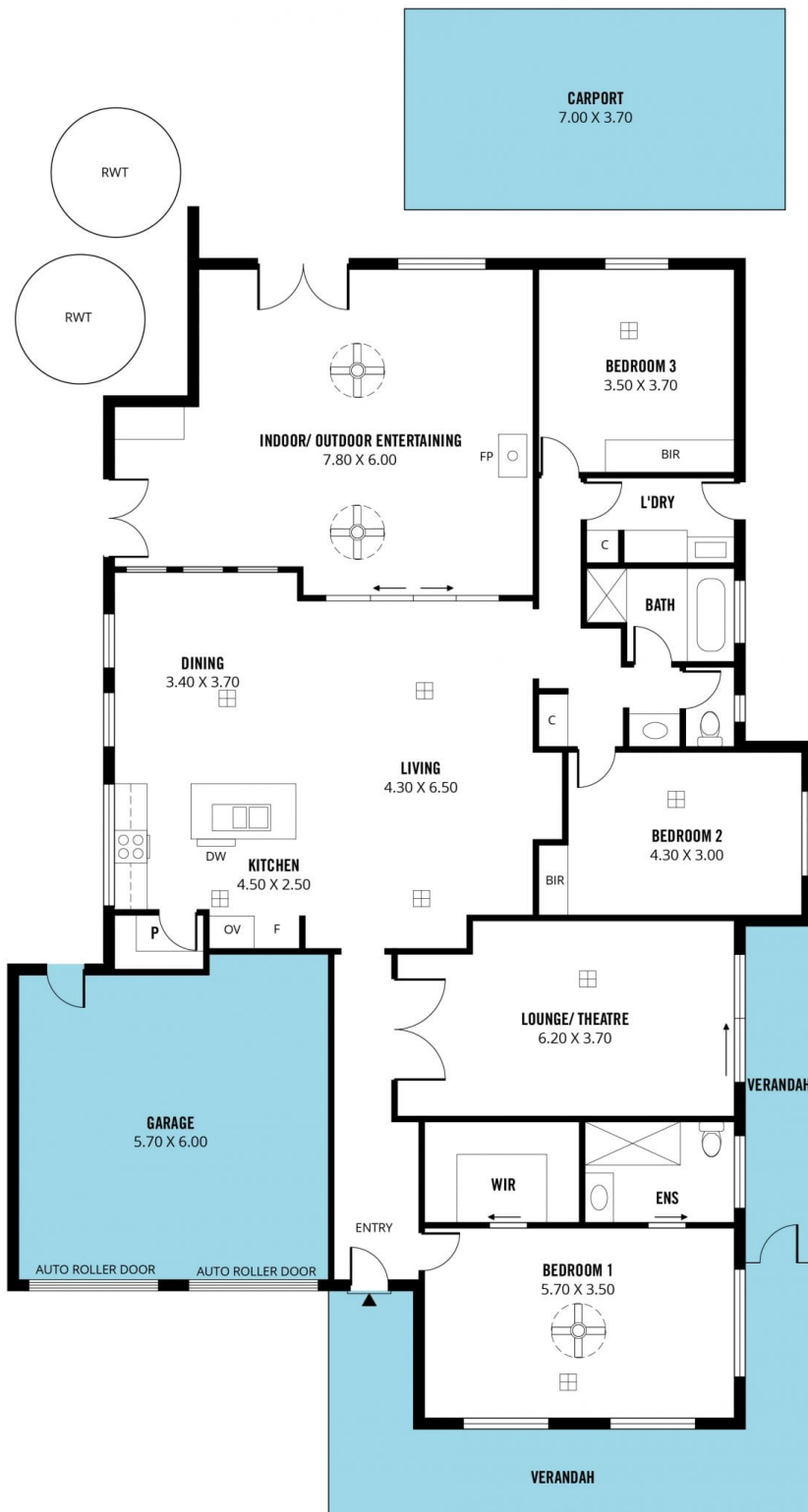
Situated in a truly outstanding position within the sought-after Mawson Green estate, on a generous allotment of over 800sqm, this impeccably presented family home provides approximately 220m² of brilliance! What's more, it comes with a fully self-contained granny flat setup, perfect for those seeking guest quarters or dual family-living - as well as additional access from its corner block position, ideal for caravan parking.

With outstanding kerbside appeal, complemented by aggregate concrete driveway and manicured grounds, upon stepping inside you will marvel at a home that will perfectly cater to all the needs of the growing family.

The main home comprises three double bedrooms,

[For full version visit the website](#)

Type : House
Building Size : 24 sqm
Land Size : 809 sqm
View : <https://www.magain.com.au/property/15-expedition-boulevard-meadows-sa/8433884>



Scale in metres. This drawing is for illustration purposes only. All measurements are approximate and details intended to be relied upon should be independently verified.

Produced by The Fotobase Group