

# MAGAIN



## 9 Stanton Street Edwardstown SA

3 2 3

Set on a massive 1,024m<sup>2</sup> (approx) corner allotment in a fantastic location close to shops, transport and schools, this property is suitable for a range of buyers and offers huge potential to renovate or develop (STCC).

The large front garden and impressive sandstone facade give this property a strong street appeal. Because it's located on a corner allotment, in a quiet location, this property does feel private and like you only have one neighbour.

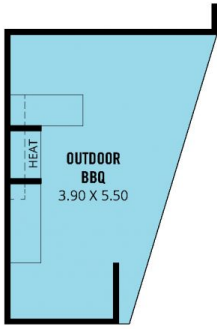
Upon entering the home you'll notice the original carpets and wallpaper in the separate entrance that is a theme that flows through the property that clearly indicates this home has been very much loved and well maintained.

[For full version visit the website](https://www.magain.com.au/property/9-stanton-street-edwardstown-sa/8433973)

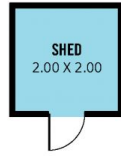
**Type** : House  
**Price** : \$ 1,001,000  
**Building Size** : 20 sqm  
**Land Size** : 1024 sqm  
**View** : <https://www.magain.com.au/property/9-stanton-street-edwardstown-sa/8433973>



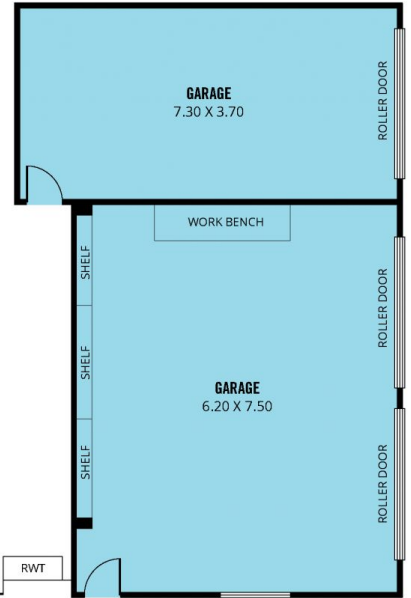
**David Hams**  
08 8366 2230



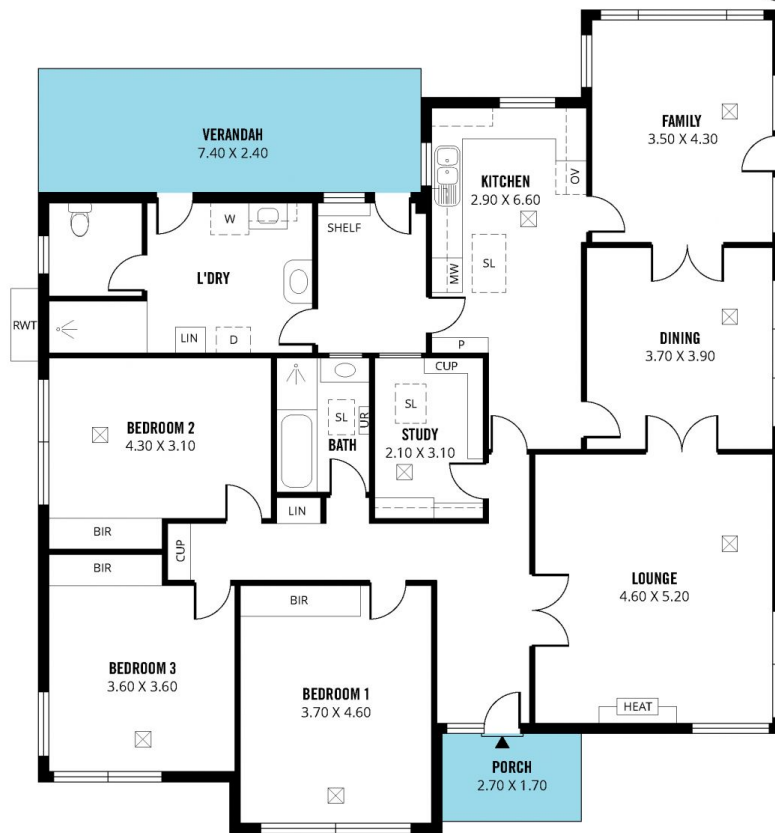
(APPROX LOCATION)



(APPROX LOCATION)



RWT



Scale in metres. This drawing is for illustration purposes only. All measurements are approximate and details intended to be relied upon should be independently verified.

Produced by **The Fotobase Group**