

MAGAIN



6/5 Ranford Crescent MITCHELL PARK SA

2 1 1

Ideally positioned, this highly appealing townhouse offers reserve outlooks, lovely big parks closeby, and is just a few minutes from Mitchell Park train station and the vibrant Marion Hotel. The home is also less than 10minutes from Westfield Marion shopping centre and Flinders Medical Centre & University - ensuring the perfect combination of convenience and lifestyle for the lucky buyer.

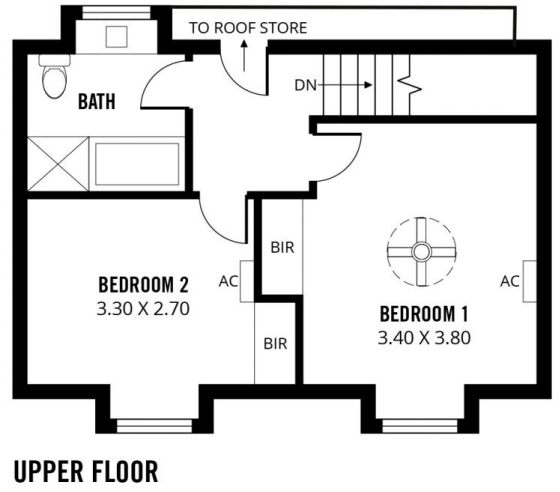
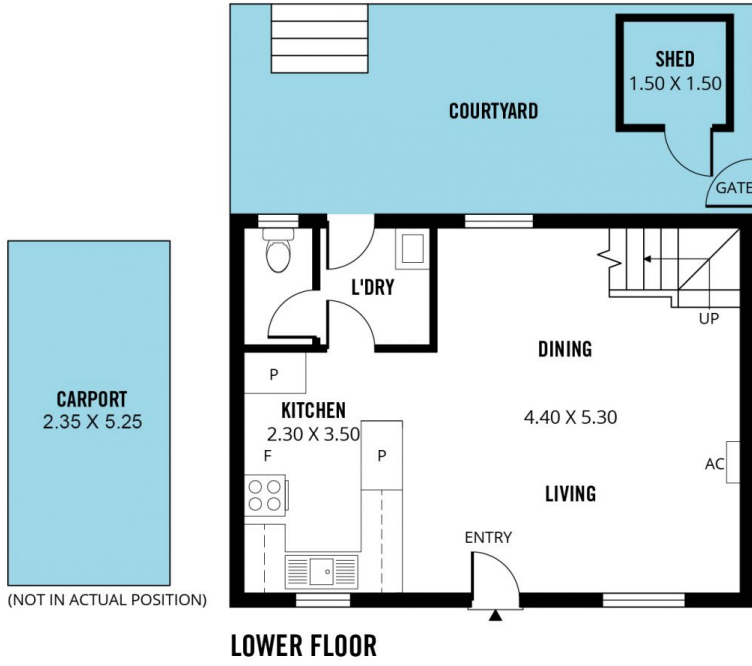
Type : Unit
Price : \$ 365,900
View : <https://www.magain.com.au/property/65-ranford-crescent-mitchell-park-sa/8433987>

Freshly painted with new floors, the delightful floorplan offers light and airy open plan living and dining areas, combining with a spacious and functional kitchen. On the upper level, you will love the two big bedrooms, both with built-in robes and feature windows overlooking the reserve. Bedrooms are serviced by a spacious bathroom on the upper level.

[For full version visit the website](#)

<https://www.magain.com.au>
Magain Real Estate

Shop 60, Seaford Central Shopping Centre, Commercial Road
08 8366 2230



Scale in metres. This drawing is for illustration purposes only. All measurements are approximate and details intended to be relied upon should be independently verified.

Produced by **The Fotobase Group**