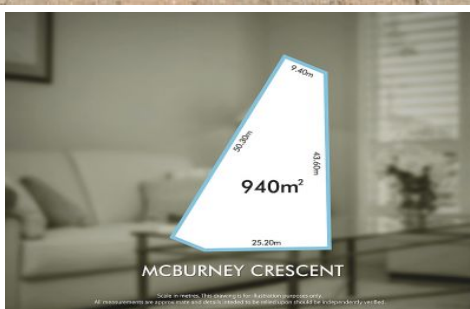


MAGAIN



15 McBurney Crescent Aldinga Beach SA

3 2 2

Built in 2001 by Format Homes, 15 McBurney Crescent, Aldinga Beach is a beautiful, three bedroom two bathroom home offered by the original owners. This loved, family owned home is only a few streets back from the picturesque Aldinga Beach coastline and close to the Aldinga Bay Shopping Centre, Symonds Reserve and plenty of beautiful cafes, breweries and restaurants.

Positioned on a generous 940sqm allotment this property will suit an array of buyer - especially those looking for a larger backyard and plenty of access. Arriving at the home you'll notice and love that the property is fully fenced and has front double gate access down the side of the property allowing easy entry for those large 4WD's, boats and caravans. Inside, the home offers three bedrooms and a

[For full version visit the website](https://www.magain.com.au/property/15-mcburney-crescent-aldinga-beach-sa/8433992)

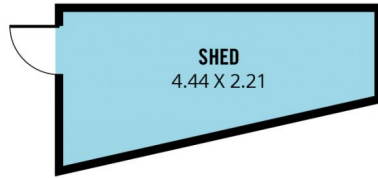
Type : House
Price : \$ 635,000
Building Size : 126 sqm
Land Size : 940 sqm
View : <https://www.magain.com.au/property/15-mcburney-crescent-aldinga-beach-sa/8433992>



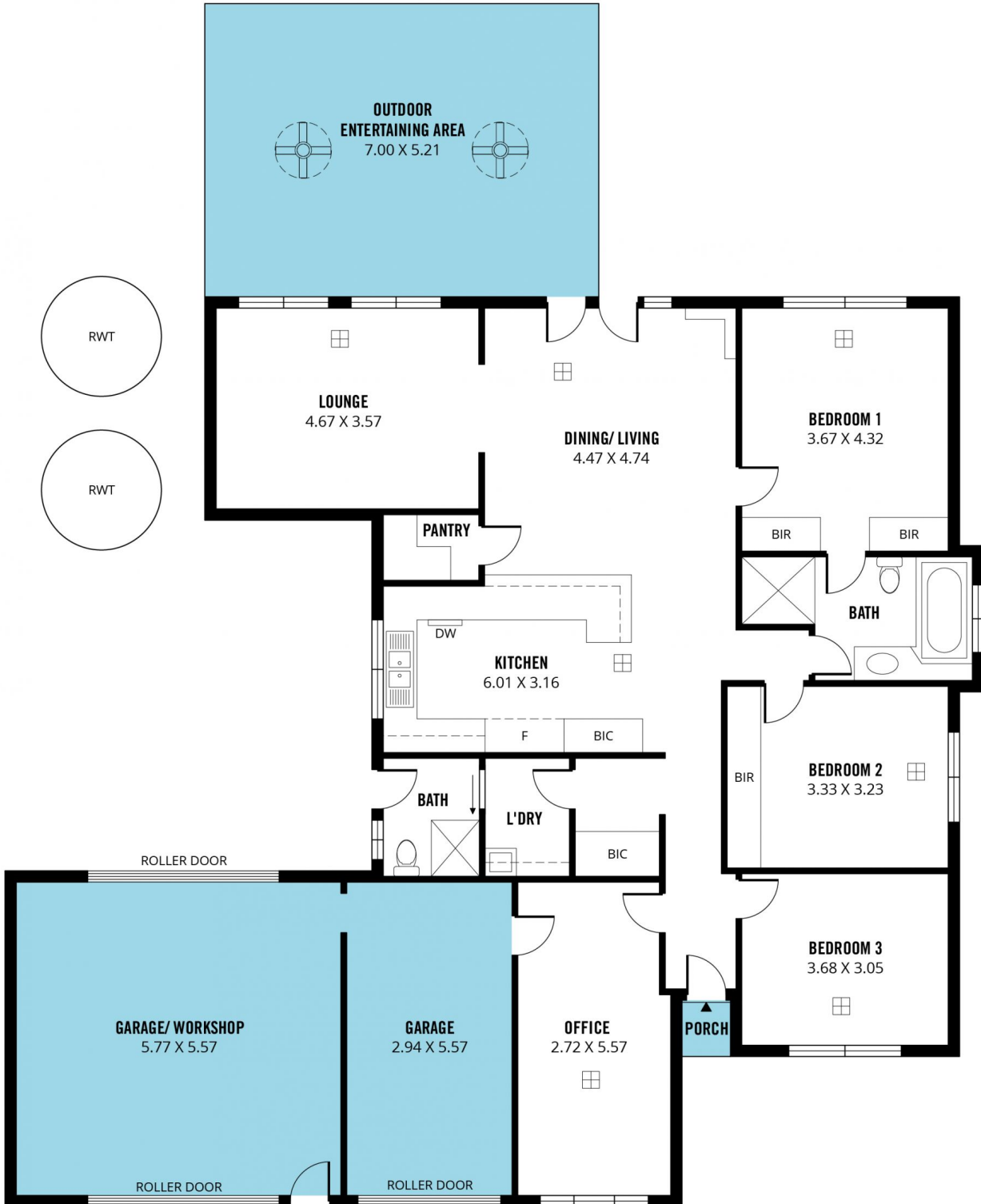
Jemma Turner
08 8366 2230

<https://www.magain.com.au>
Magain Real Estate

Shop 60, Seaford Central Shopping Centre, Commercial Road
08 8366 2230



(NOT IN ACTUAL LOCATION)



Scale in metres. This drawing is for illustration purposes only. All measurements are approximate and details intended to be relied upon should be independently verified.

Produced by **The Fotobase Group**