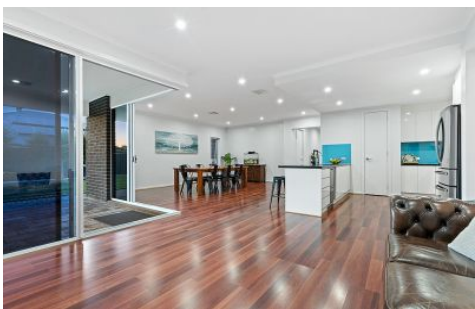


MAGAIN



16 Harewood Grove MEADOWS SA

4 2 6

Situated in a truly outstanding position within the sought-after Mawson Green estate, on a generous allotment of almost 900sqm, this stunning family residence is situated on a convenient corner allotment opposite a tree-lined reserve with Meadows Creek meandering through.

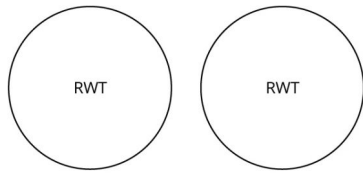
With outstanding kerbside appeal, the home offers lockup double garage with gated driveway alongside, plus additional gated access at the rear - perfect for those seeking to securely park caravans, boats or work vehicles.

Upon stepping inside you will marvel at a home that will perfectly cater to all the needs of the growing family, with outstanding synergy and flow throughout its spaces living

[For full version visit the website](#)

Type : House
Price : \$ 760,000
Building Size : 30 sqm
Land Size : 897 sqm
View : <https://www.magain.com.au/property/16-harewood-grove-meadows-sa/8433994>

(NOT IN POSITION)



Scale in metres. This drawing is for illustration purposes only. All measurements are approximate and details intended to be relied upon should be independently verified.

Produced by **The Fotobase Group**