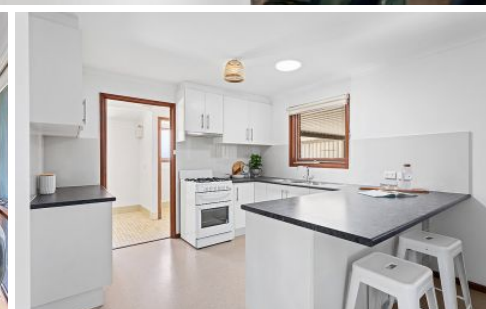


MAGAIN



21 Brigalow Road Morphett Vale SA

3  1  3 

Whether it be for the savvy investor or the forward-thinking first homebuyer, 21 Brigalow Road is a sure winner!

Superbly presented with an appealing price tag, the home is peacefully situated yet just a few minutes from local schools, shopping, and facilities - with Noarlunga Centre also closeby.

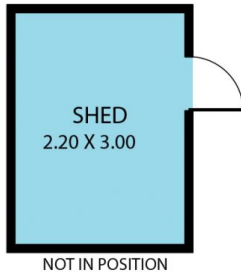
With impressive kerbside appeal, upon stepping side you will enter a lovely big living area, with large windows inviting lots of natural light. From here, step through to a spacious dining area, combining beautifully with a large and very impressive kitchen, with attractive fixtures, lots of bench and pantry.

Type : House
Price : \$ 511,300
Building Size : 110 sqm
Land Size : 662 sqm
View : <https://www.magain.com.au/property/21-brigalow-road-morphett-vale-sa/8434012>

[For full version visit the website](https://www.magain.com.au)

<https://www.magain.com.au>
Magain Real Estate

Shop 60, Seaford Central Shopping Centre, Commercial Road
08 8366 2230



Scale in metres. This drawing is for illustration purposes only. All measurements are approximate and details intended to be relied upon should be independently verified.

Produced by **The Fotobase Group**