

MAGAIN



13 Bruce Street MORPHETT VALE SA

3  1  2 

Please contact Jemma Turner for more information for more information, or to view the property.

Nestled in a quiet street, in a brilliant location in Morphett Vale, 13 Bruce Street was originally built in 1966 and is waiting for its new owner to add their spin on the home. Position on a generous, 698sqm block, with an 18m frontage, this property will suit an array of buyers including handy first home buyers, investors and developers (STCC).

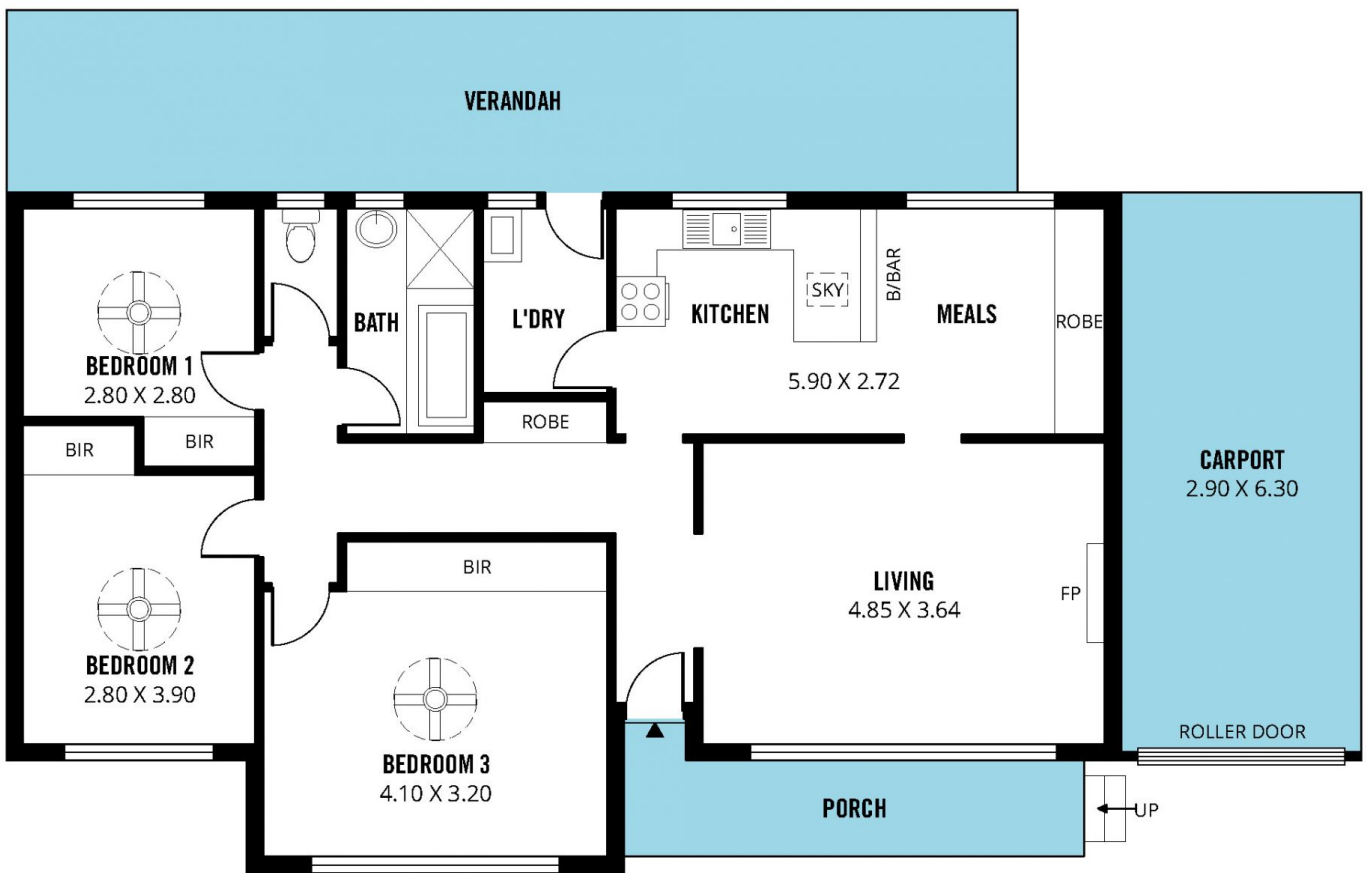
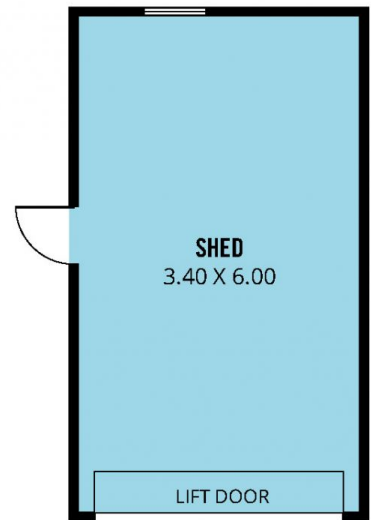
The home is comprised of three bedrooms, all with built in robes and ceiling fans. The three bedrooms are serviced by the main bathroom with handy separate toilet. Natural light fills the good sized lounge room, and the dining and kitchen, while original, are also of good size.

[For full version visit the website](#)

Type : House
Building Size : 12 sqm
Land Size : 698 sqm
View : <https://www.magain.com.au/property/13-bruce-street-morphett-vale-sa/8434024>



Jemma Turner
08 8366 2230



Scale in metres. This drawing is for illustration purposes only. All measurements are approximate and details intended to be relied upon should be independently verified.

Produced by **The Fotobase Group**