

MAGAIN



11 Pitcairn Circuit SEAFORD RISE SA

3  1  2 

Sitting up on the high side of the road ,overlooking the reserve in a very quiet part of Seaford rise.

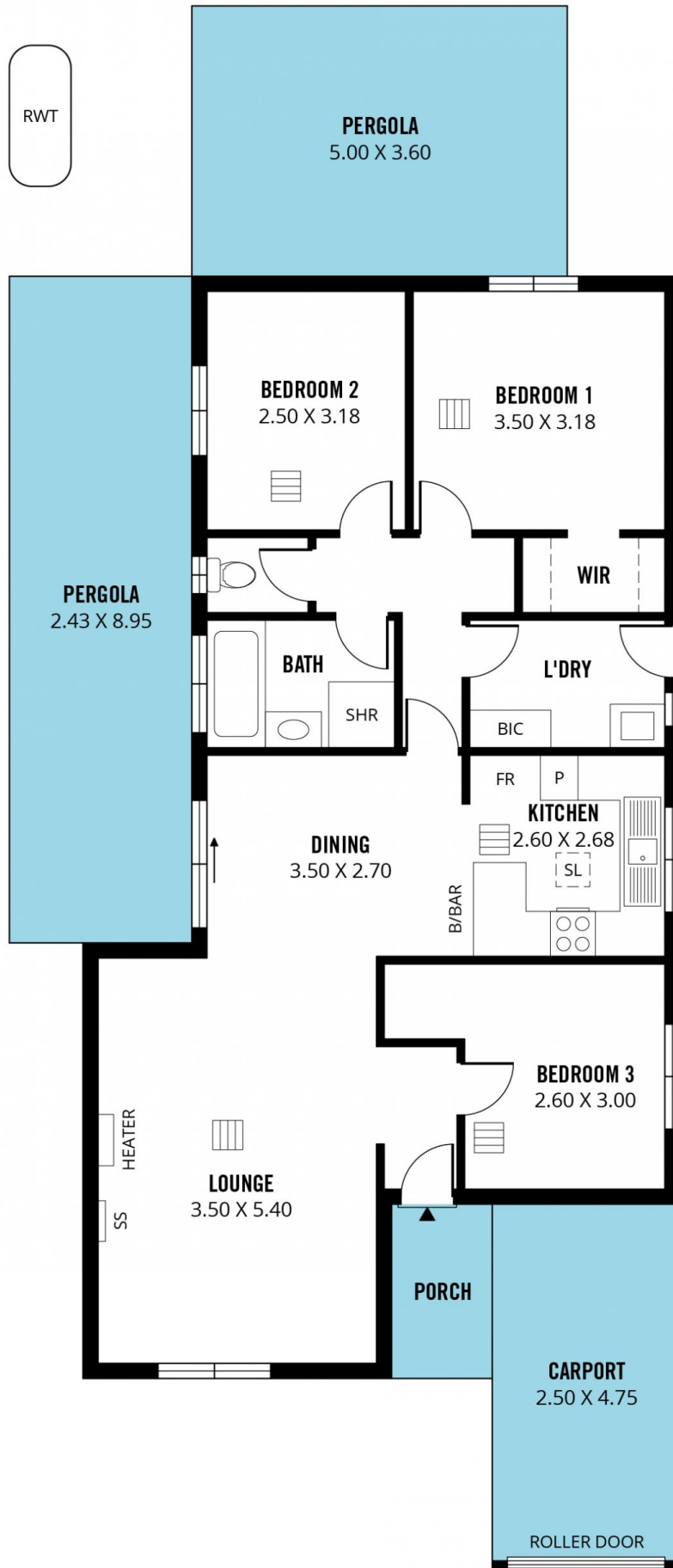
This lovely well looked after 3 bedroom home with a single garage , has been freshly painted and carpeted ,it boasts a nice entry into a spacious lounge dining area with a lovely neat kitchen leading off it. The main bedroom is at the front of the home , with bedrooms 2 and 3 sitting at the rear of the home overlooking the back garden .The home is well served by ducted air-conditioning and a gas space heater in the living area ,it has a neat low maintenance front yard , and quite a good size backyard for entertaining ,and growing vegetables. A great convenient location , close to Seaford Central Shopping Centre ,handy to Medical Facilities , so close to transport options , 5 minutes to the beautiful Moana Beach ,Surf Club and Cafes and a very

Type : House
Building Size : 11 sqm
Land Size : 388 sqm
View : <https://www.magain.com.au/property/11-pitcairn-circuit-seaford-rise-sa/8434036>



Neil Cole
08 8366 2230

[For full version visit the website](https://www.magain.com.au)



Scale in metres. This drawing is for illustration purposes only. All measurements are approximate and details intended to be relied upon should be independently verified.

Produced by **The Fotobase Group**