




MAGAIN



740 Forktree Road CARRICKALINGA SA

4  3  8 

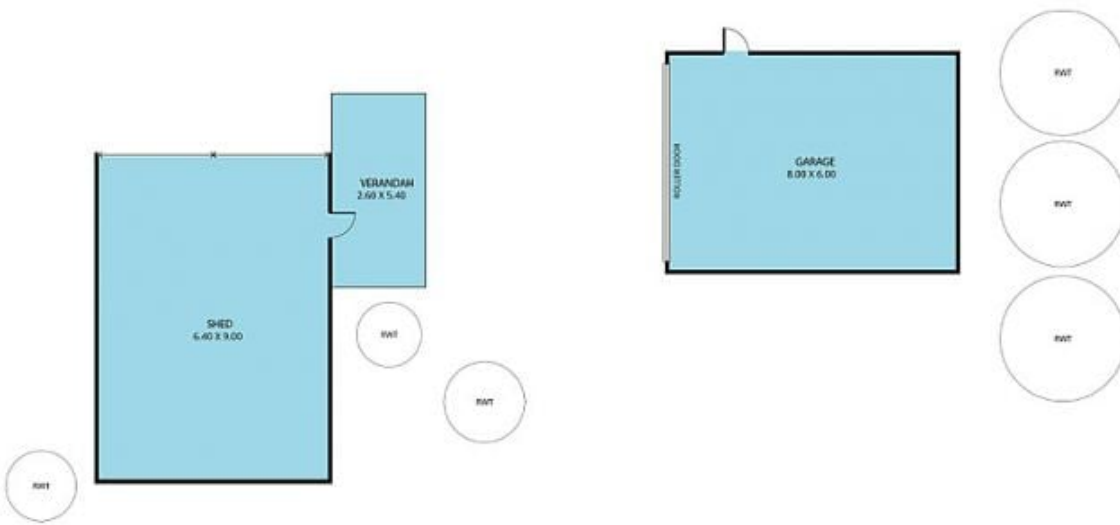
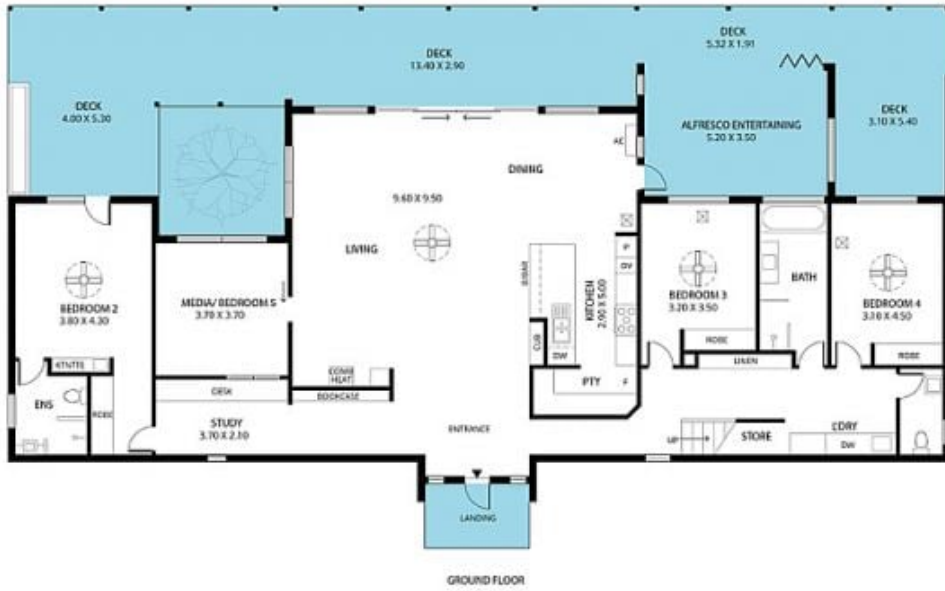
A truly mesmerising combination of light and space, innovation, and views that will take your breath away. This stunning architecturally designed home offers solar-efficient & eco-friendly lifestyle on almost 10 acres of glorious Fleurieu land - only just over an hours commute to Adelaide CBD, whilst in the midst of outstanding local beaches and landscapes.

While the property's gated entry might be subtle, as you approach along the gravel driveway you soon gain a sense of the immense quality of this home, the land and its enviable position.

Expansive open living spaces showcase the home's sustainable passive solar design, while its large, double

Type : House
Building Size : 32 sqm
Land Size : 37514.4 sqm
View : <https://www.magain.com.au/property/740-forktree-road-carrickalinga-sa/8434099>

[For full version visit the website](https://www.magain.com.au)



Scale in metres. This drawing is for illustration purposes only. All measurements are approximate and details intended to be relied upon should be independently verified.

Produced by The Fotobase Group

