

MAGAIN



2 Fountain Valley Drive HAPPY VALLEY SA

3 1 5

With a lovely blend of indoor and outdoor living, this superbly presented home is perfectly nestled close to local schools, shopping, transport, lovely local parks and just couple of doors from the Fountain Valley lake - and also featuring solar electricity system!

Outstanding kerbside appeal sets the scene, with a lovely wide frontage, established gardens and lots of off-street parking. Internally you will find a superbly appointed home, with an abundance of living space. The split level design amplifies the character, with the home's sunken formal lounge featuring an elegant fireplace and mantle.

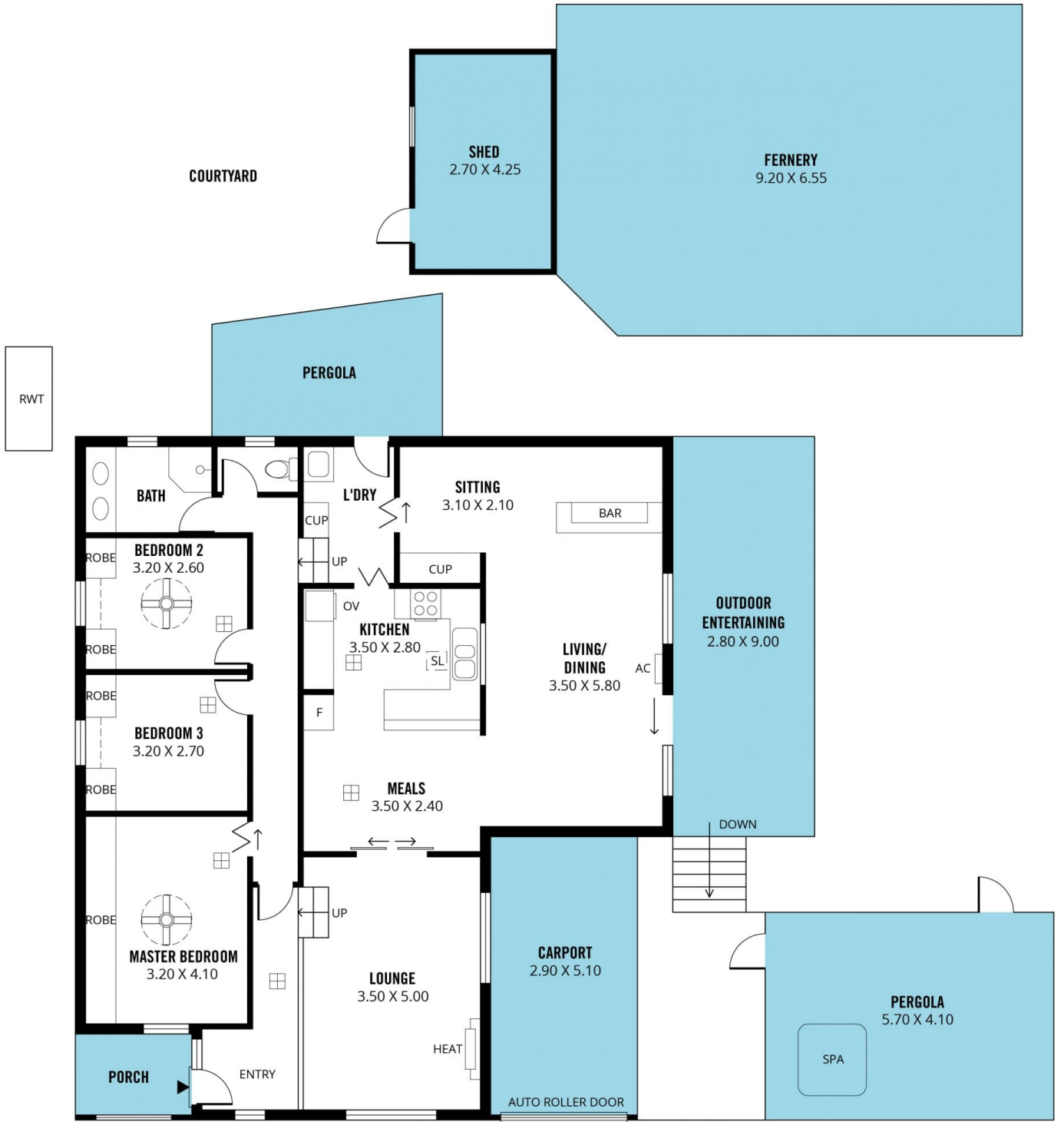
Step through to the hub of the home where you will find an elegant and spacious kitchen, which in turn blends

Type : House
Building Size : 16 sqm
Land Size : 620 sqm
View : <https://www.magain.com.au/property/2-fountain-valley-drive-happy-valley-sa/8434103>

[For full version visit the website](https://www.magain.com.au)

<https://www.magain.com.au>
Magain Real Estate

Shop 60, Seaford Central Shopping Centre, Commercial Road
08 8366 2230



Scale in metres. This drawing is for illustration purposes only. All measurements are approximate and details intended to be relied upon should be independently verified.

Produced by **The Fotobase Group**