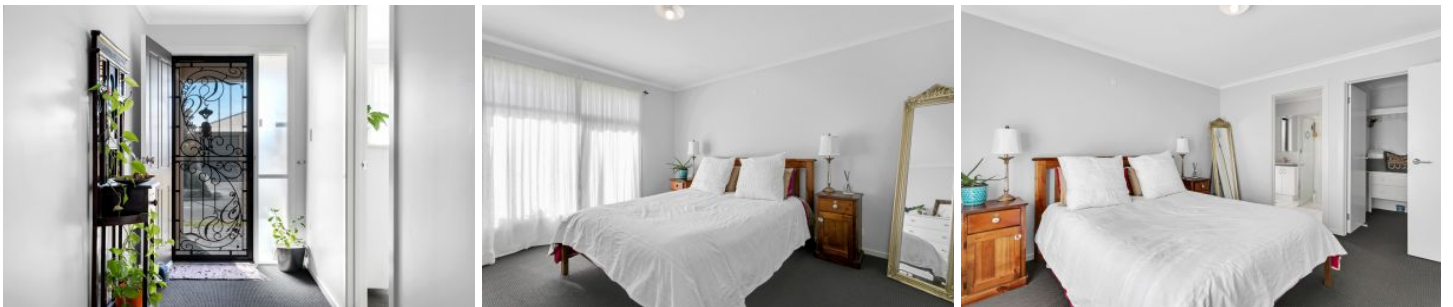





MAGAIN



28 Whistlers Avenue ALDINGA BEACH SA

4  2  2 

Please contact Jemma Turner for more information, or to view the property.

Built in 2011, this neat and tidy family home is situated on a 512sqm block in the ever popular Sunday Estate. Surrounded by other quality homes, this property is located at the end of Whistlers Avenue, meaning minimal traffic and only a short walk to the lovely walking trails through the scrub, or to the beach.

Inside, the master bedroom is at the front of the home and is made complete with a sizeable walk in robe and neutral ensuite bathroom. Up the hall is the convenient, internal access from the double garage and good sized dining room (or second lounge), before the home then opens up to the

Type : House
Land Size : 512 sqm
View : <https://www.magain.com.au/property/28-whistlers-avenue-aldinga-beach-sa/8434116>



Jemma Turner
08 8366 2230

[For full version visit the website](https://www.magain.com.au)

<https://www.magain.com.au>
Magain Real Estate

Shop 60, Seaford Central Shopping Centre, Commercial Road
08 8366 2230



Scale in metres. This drawing is for illustration purposes only. All measurements are approximate and details intended to be relied upon should be independently verified.

Produced by **The Fotobase Group**