

MAGAIN



6/225-227 Brodie Road MORPHETT VALE SA

2 1 1

Please contact Jemma Turner for more information, or to view the property.

Quietly nestled amongst other adorable units, peacefully set well back off the road, Unit 6/225-227 Brodie Road would be an ideal property for the first home buyer, savvy investor, or single/couple looking to downsize. The group is very well maintained, and the location is fabulous. While the group itself seems tucked away from the world, you are only a short walk, or drive, to Primary Schools and High Schools, the Southern Expressway, bus stops, health facilities, shopping centres, cafes/restaurants and other essential amenities.

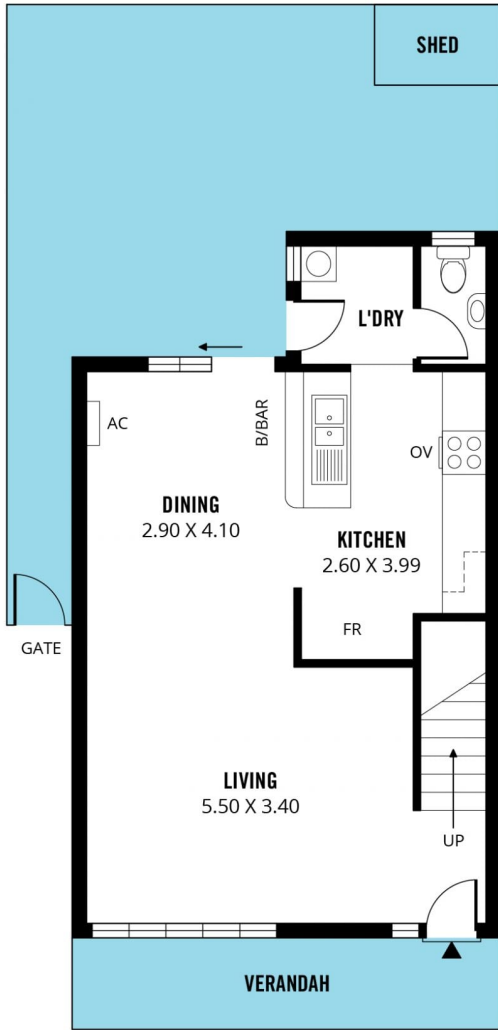
Unit 6 offers a sizeable, well landscaped, fenced front yard,

[For full version visit the website](#)

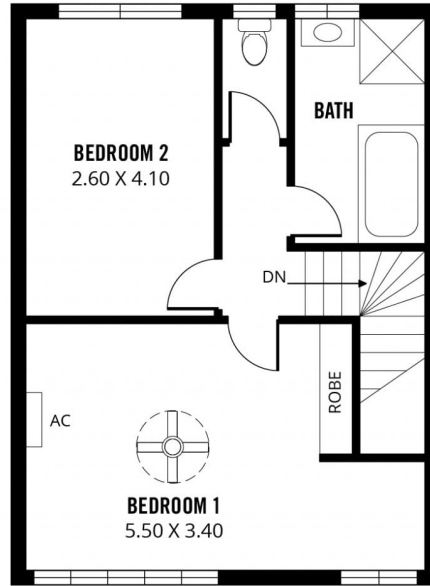
Type : Unit
Building Size : 11 sqm
View : <https://www.magain.com.au/property/62-25227-brodie-road-morphett-vale-sa/8434119>



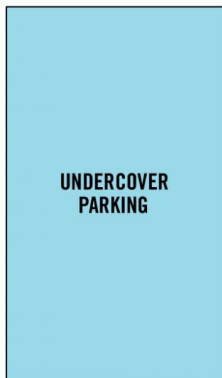
Jemma Turner
08 8366 2230



LOWER LEVEL



UPPER LEVEL



(NOT IN POSITION)

