

MAGAIN



4/50 Murray Road PORT NOARLUNGA SA

2  1  1 

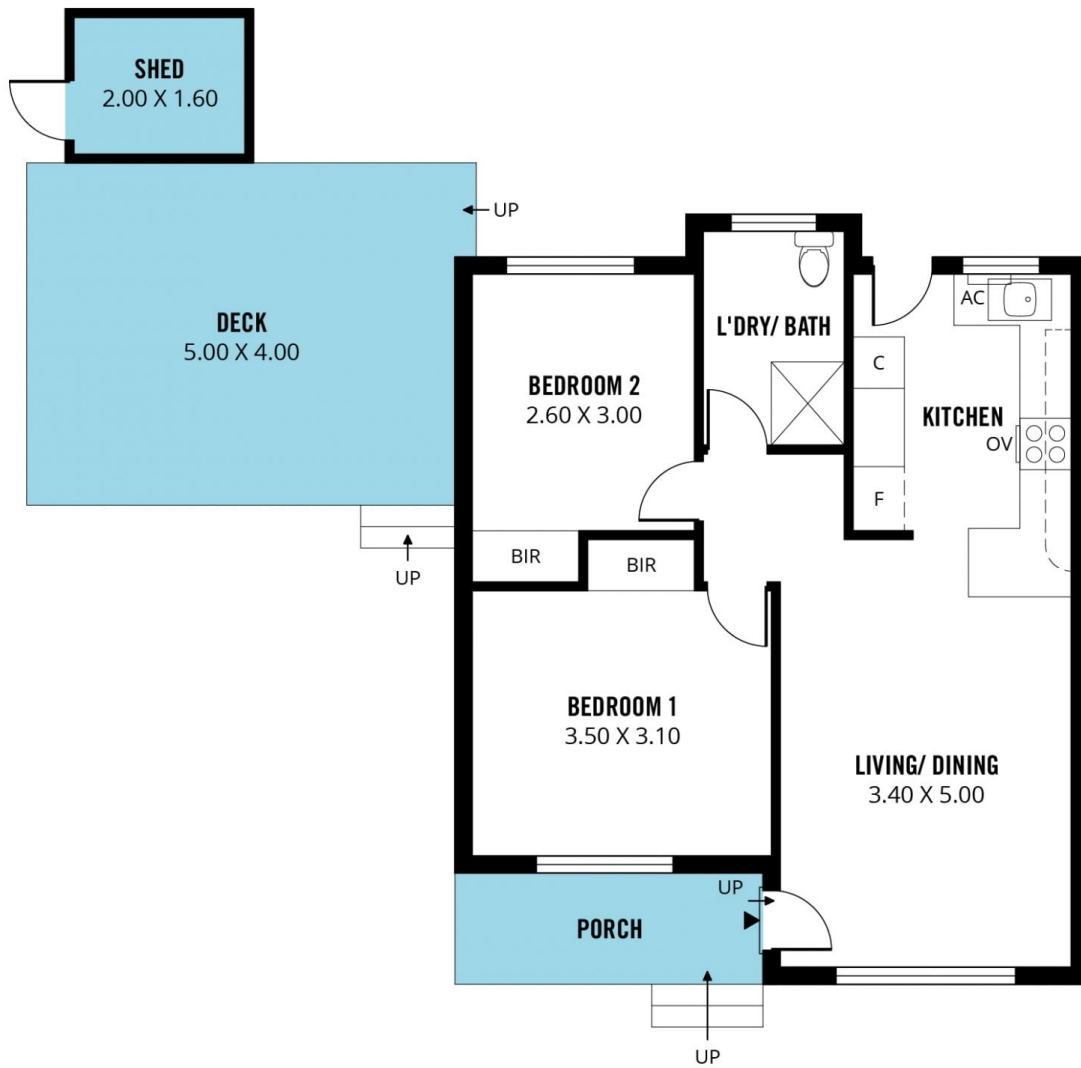
(Access via Katharine Street) All roads lead to the beach! Low maintenance lifestyle right in the heart of the south's most desirable position, where you can be just moments from your favourite beaches, cafes, and numerous outdoor recreational pursuits!

Whether it be for the savvy investor or the smart home-owner, this fine unit is perfectly situated. Accessed via Katharine Street, one of the most desirable streets in the area, you will be amazed at what your money can buy in such a famed beachside position. Comprising two spacious bedrooms (both with built-ins), the property offers spacious formal living room with lots of natural light, with adjoining meals and kitchen area.

Type : Unit

View : <https://www.magain.com.au/property/450-murray-road-port-noarlunga-sa/8434176>

[For full version visit the website](#)



Scale in metres. This drawing is for illustration purposes only. All measurements are approximate and details intended to be relied upon should be independently verified.

Produced by **The Fotobase Group**