

MAGAIN



18 Sandy Glass Court SHEIDOW PARK SA

4 🛏 2 🚿 4 🚗

This stylish family home is sure to impress with all it has to offer. The location is ideal in a quiet court nestled amongst other quality homes and with the Sandy Glass Court Reserve less than 100m away the kids will love it. Close to local schools, major shopping and public transport.

The home features 4 bedrooms with the master having c/fan en-suite and wir and beds 2, 3 and 4 all have birs. The appealing layout of the floor plan provides 2 living areas incorporating spacious lounge room which flows into the dining room and through to the gorgeous kitchen. The kitchen has quality appliances including 900mm gas hotplate, Baumatic Studio Solari oven, built in microwave, built in dishwasher and attractive breakfast bench which overlooks the family room and meals area with mirrored black slate floors. The main bathroom has been freshened

Type : House
Building Size : 19 sqm
Land Size : 644 sqm
View : <https://www.magain.com.au/property/18-sandy-glass-court-sheidow-park-sa/8434185>



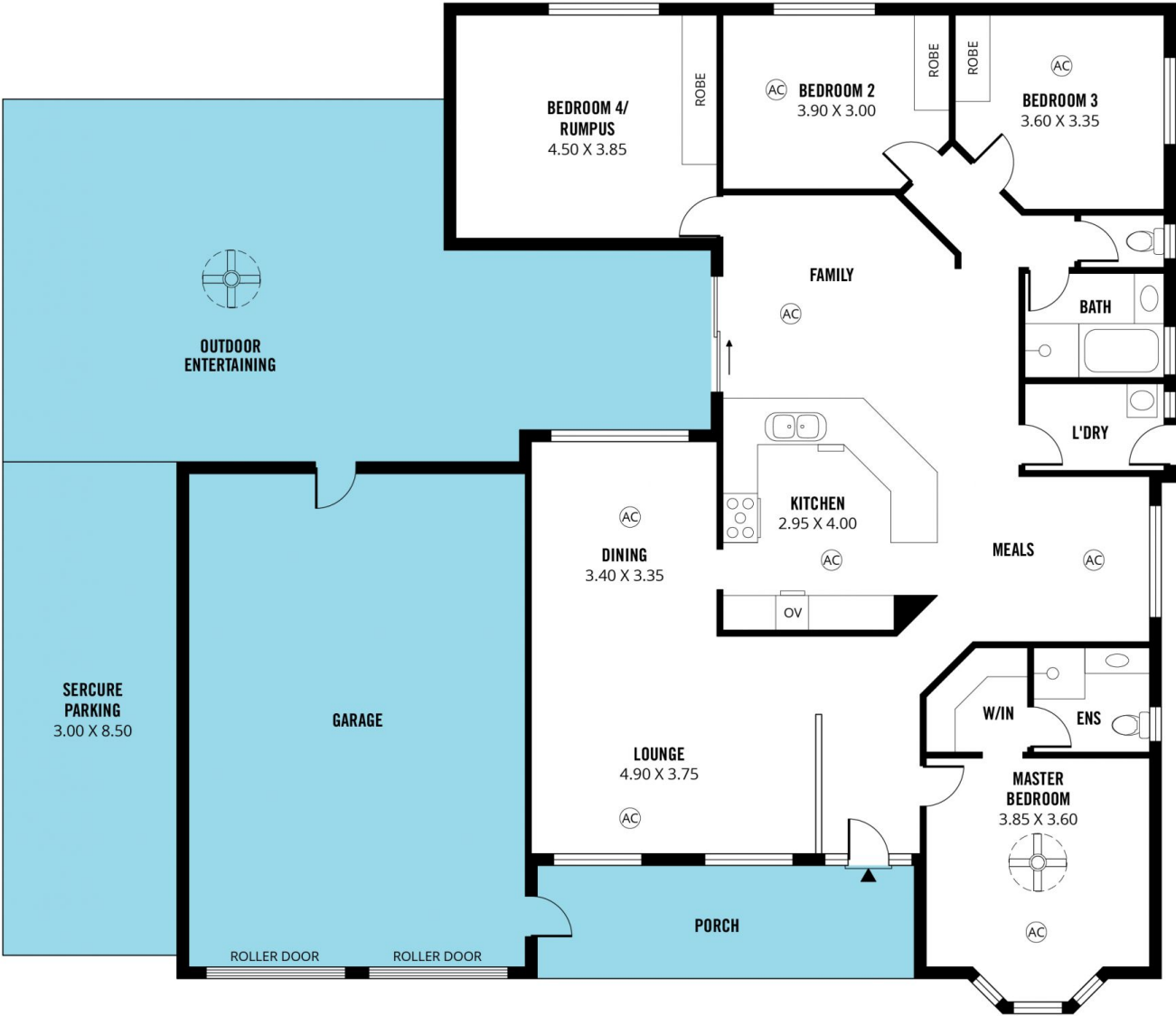
Jason Smart
08 8366 2230

[For full version visit the website](https://www.magain.com.au)

<https://www.magain.com.au>
Magain Real Estate

Shop 60, Seaford Central Shopping Centre, Commerci S
08 8366 2230

SHED
4.80 X 2.80



Scale in metres. This drawing is for illustration purposes only. All measurements are approximate and details intended to be relied upon should be independently verified.

Produced by **The Fotobase Group**