

MAGAIN



7 Goulding Grove NOARLUNGA DOWNS SA

3 1 2

Nestled in cul-de-sac position just moments from Cardijn College, Noarlunga Centre, train station, Southern Expressway, and just five minutes to Port Noarlunga beach - this delightful three bedroom home will appeal to all!

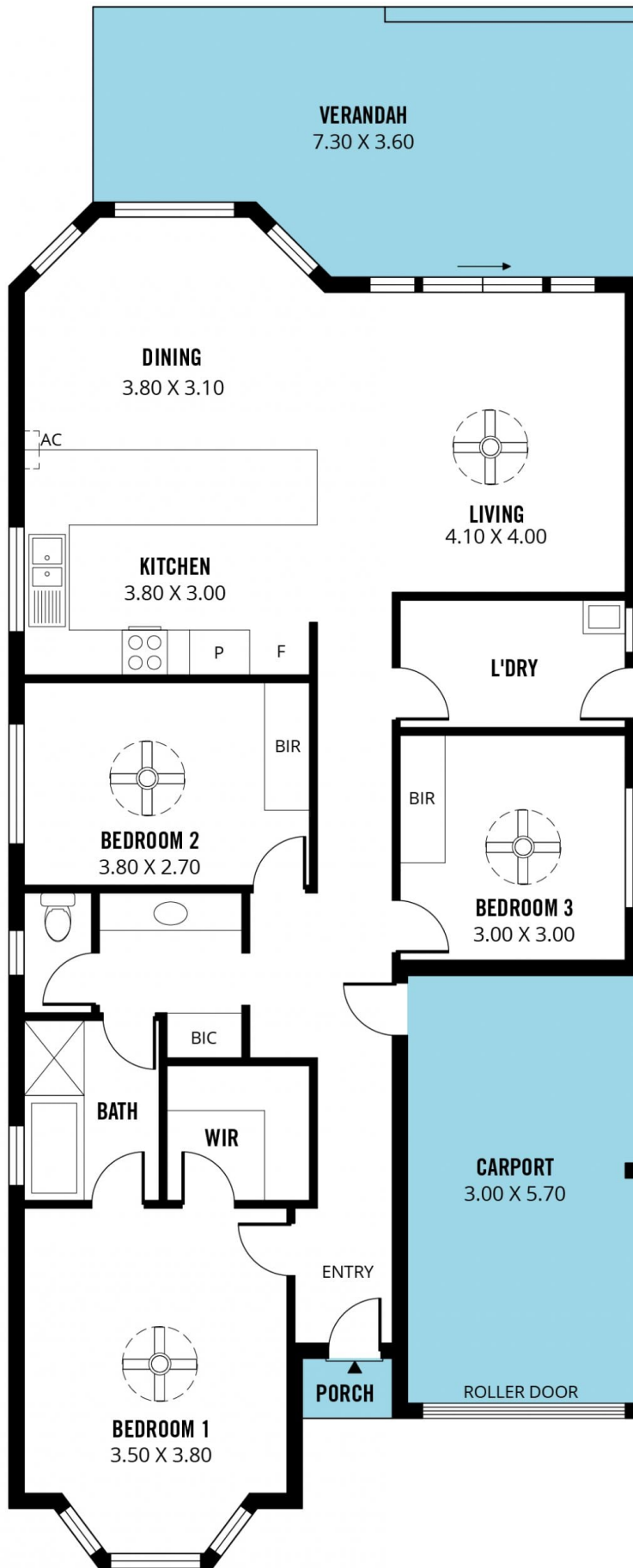
Impeccably presented throughout, the home offers generous open plan living, dining and kitchen areas - the spacious and very elegant kitchen including stainless steel appliances, loads of bench-space and breakfast bar. All of these areas offer an abundance of natural light, the lovely bay window perfectly combining the inside with the out, gazing out to private and secure gardens with lovely all weather entertaining, large patio and manicured lawns - the perfect place for a glass of wine with friends.

Type : House
Building Size : 14 sqm
Land Size : 365 sqm
View : <https://www.magain.com.au/property/7-goulding-grove-noarlunga-downs-sa/8434202>

[For full version visit the website](#)

<https://www.magain.com.au>
Magain Real Estate

Shop 60, Seaford Central Shopping Centre, Commercial Road
08 8366 2230



Scale in metres. This drawing is for illustration purposes only. All measurements are approximate and details intended to be relied upon should be independently verified. Produced by **The Fotobase Group**