

# MAGAIN



## 36 Bowering Hill Road Port Willunga SA

3 2 2

Located on the fringe of the extremely tightly held section of Port Willunga, just meters from the the Linear Park nature reserve that leads directly to one of the most spectacular beaches you'll find anywhere in the world.

The home is set on a generously sized 830m2 allotment and offers a spacious floor plan that could be ideal for a range of different buyers. The separate entrance flows into the family room that boasts a large bay window that frames a nice outlook of the front garden and the rural outlook on offer in the distance. There is an additional living area/lounge room that can be completely separated from the family room by bi-folding doors if required. This living area also has a large bay window that lets plenty of natural light fill the room. It comes with a split system air conditioner

**Type** : House  
**Price** : \$ 720,000  
**Building Size** : 163 sqm  
**Land Size** : 830 sqm  
**View** : <https://www.magain.com.au/property/36-bowering-hill-road-port-willunga-sa/8434321>

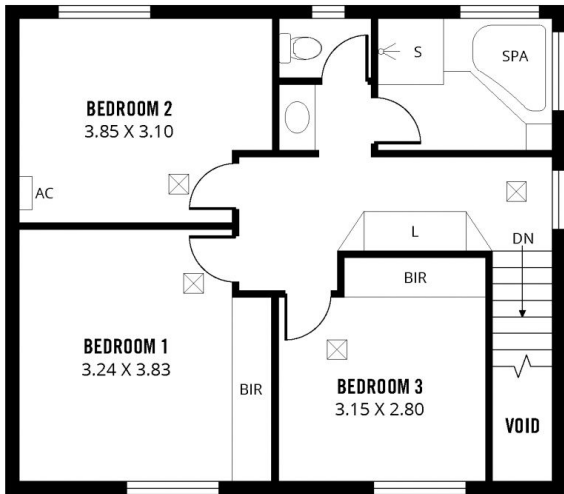


**David Hams**  
08 8366 2230

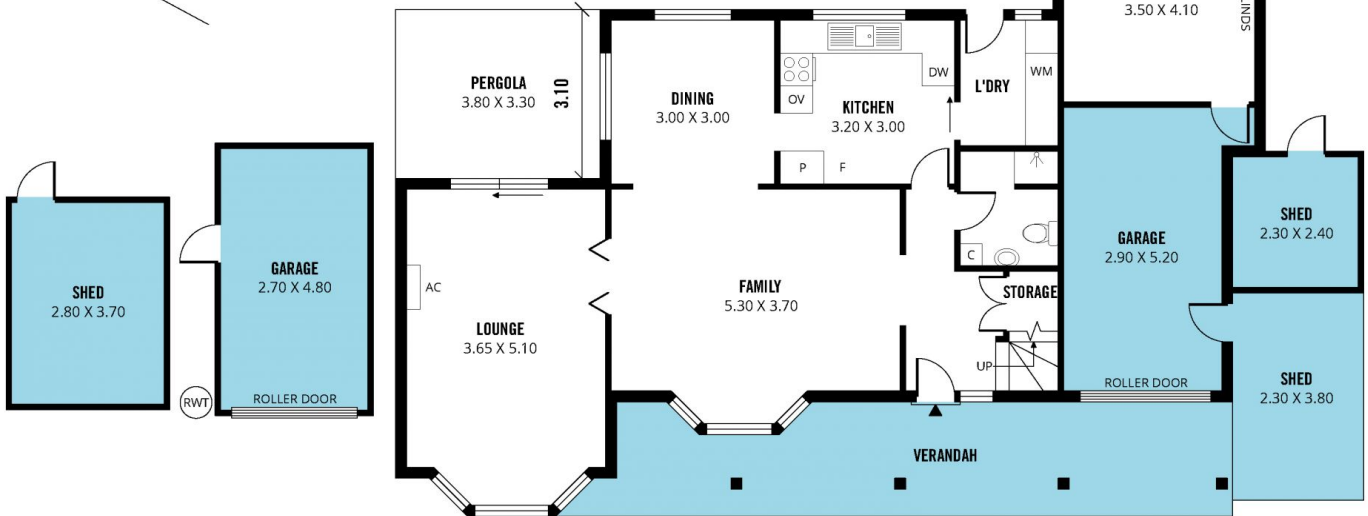
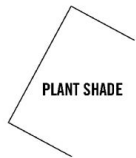
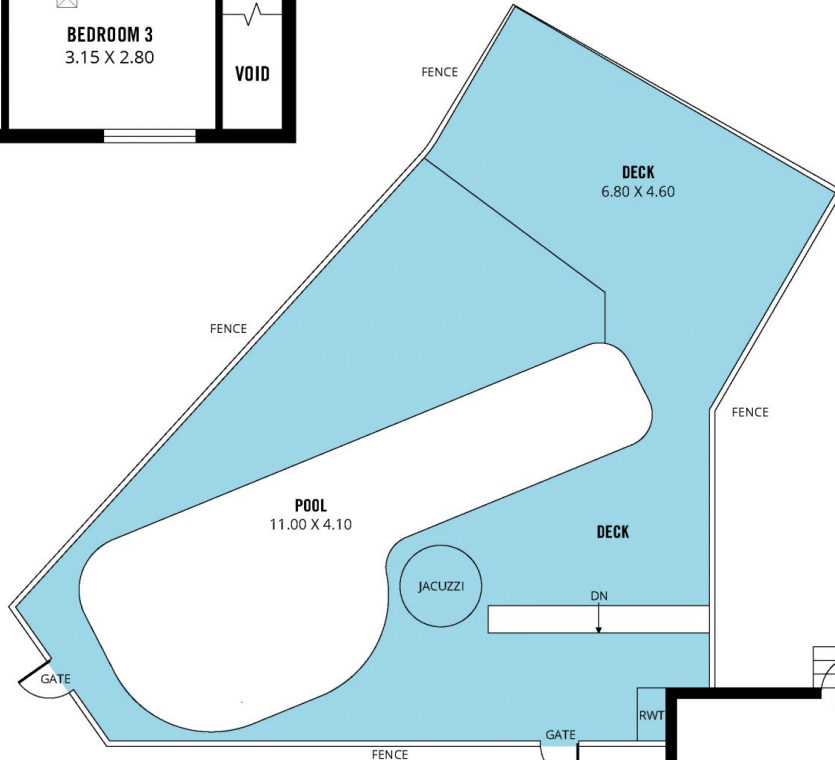
[For full version visit the website](https://www.magain.com.au)

<https://www.magain.com.au>  
Magain Real Estate

Shop 60, Seaford Central Shopping Centre, Commercial  
08 8366 2230



**UPPER LEVEL**



**GROUND LEVEL**

