




MAGAIN



10 Harwich Place Seaford SA

3  2  4 

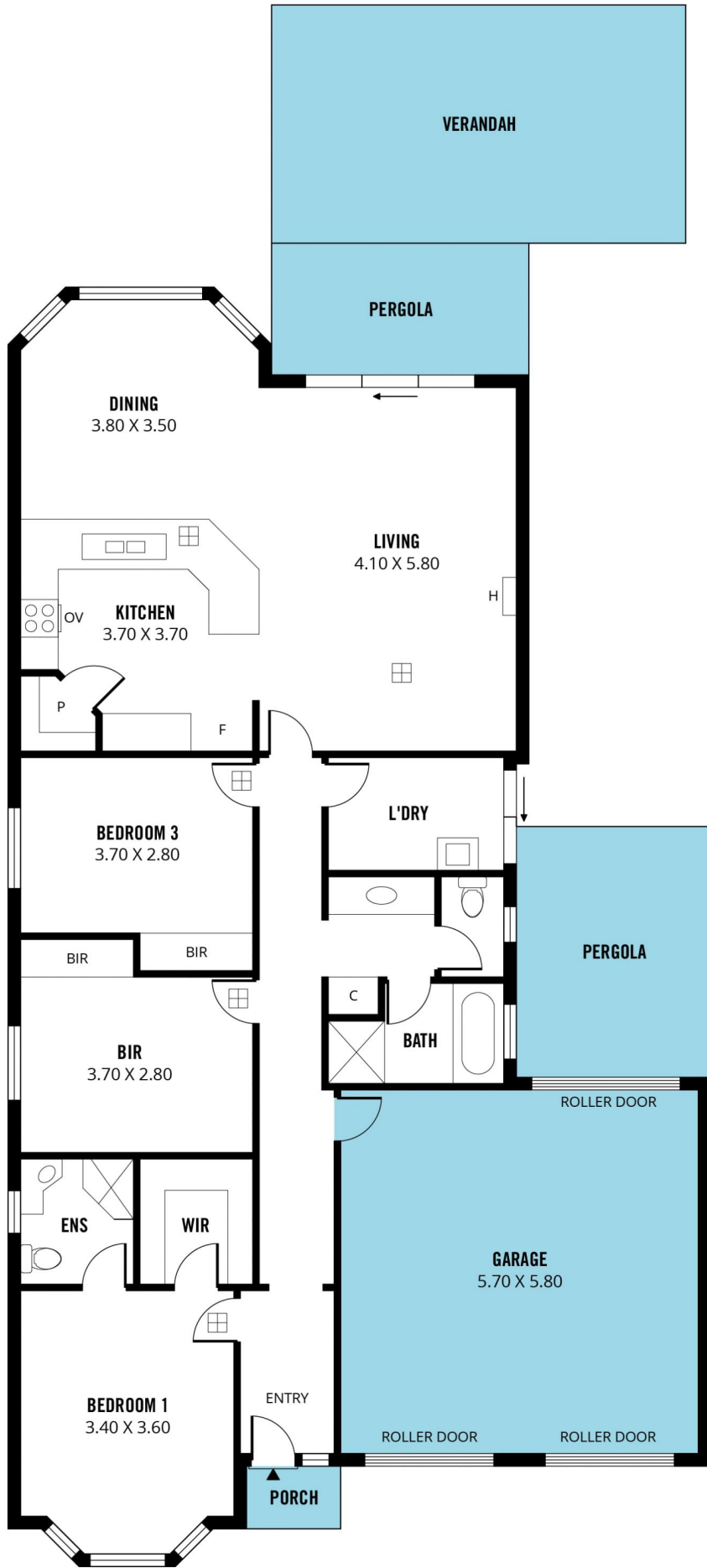
This very elegant & perfectly presented home is ideally situated right opposite a lovely park, and is literally just moments from Seaford Shopping Centre, Seaford Train station and local schools. Plus, being only minutes from stunning southern beaches and McLaren Vale's world class wineries, it promises a wonderful lifestyle for the lucky buyer too!

With excellent kerbside charm, you will be thoroughly impressed by a home of impeccable presentation, comprising three bedrooms, including a lovely master complete with pristine ensuite, walk-in robes and lovely bay window with parkland outlooks.

At the hub of the home, you will be thrilled with the

[For full version visit the website](#)

Type : House
Price : \$ 570,000
Building Size : 140 sqm
Land Size : 375 sqm
View : <https://www.magain.com.au/property/10-harwich-place-seaford-sa/8434371>



Scale in metres. This drawing is for illustration purposes only. All measurements are approximate and details intended to be relied upon should be independently verified.

Produced by **The Fotobase Group**