

MAGAIN



256 Pimpala Road Woodcroft SA

3 2 2

Beautifully presented and sparkling from head to toe, this fine home is the perfect match for savvy investors, and first homebuyers seeking great value for money.

Impressive throughout, the home's fresh paint, new floors and pristine new kitchen (with quality stainless steel appliances) steal the show. Three superbly appointed bedrooms include a lovely big master, complete with bay window, ensuite and walk-in robe.

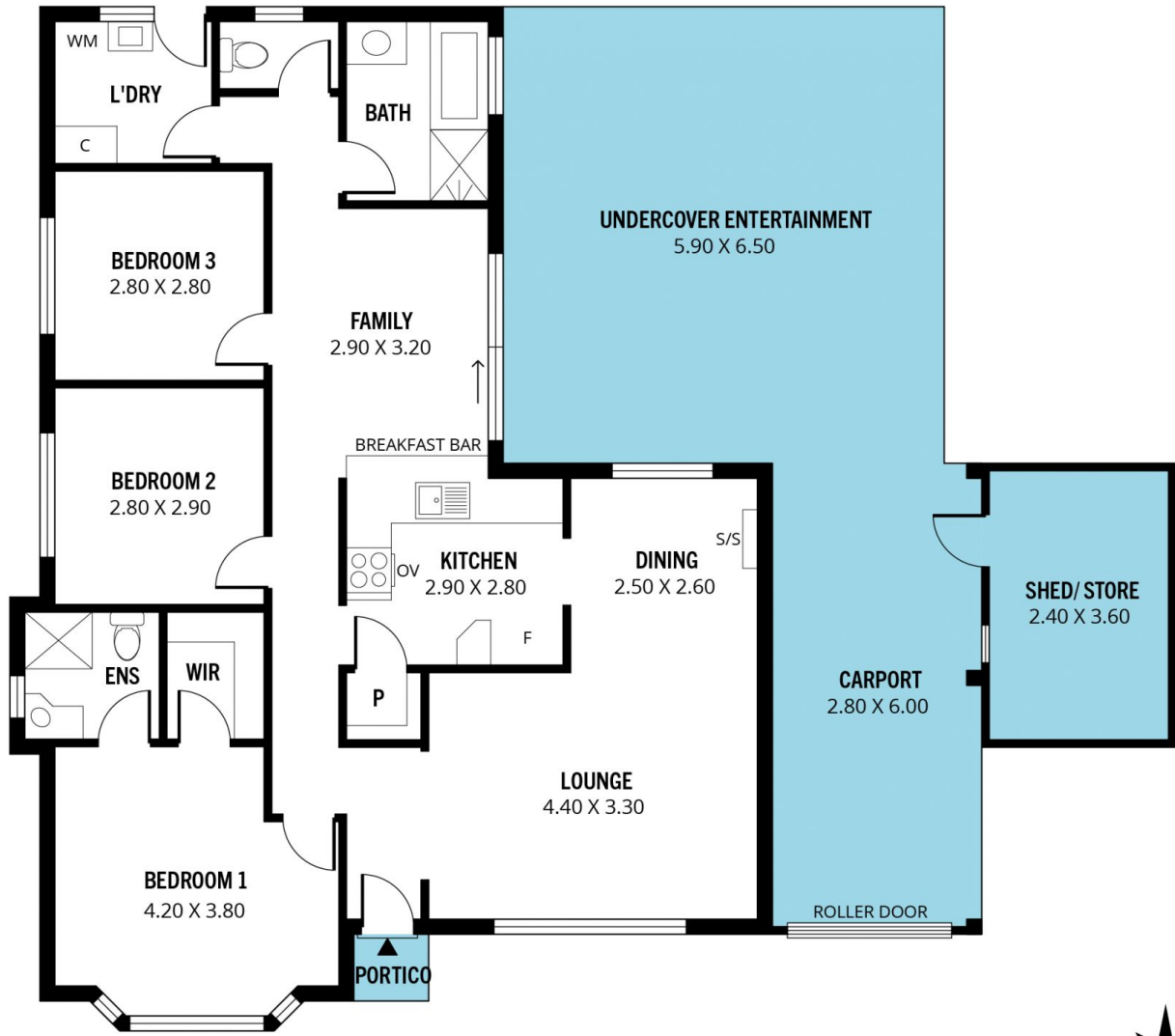
At the front of the home, a lovely formal lounge gives way to a dining area, which in turn blends beautifully with the impressive kitchen. Whilst towards the rear of the floorplan you will find a family/meals area which steps out to a spacious all-weather entertaining area, and large garden

Type : House
Price : \$ 550,000
Building Size : 120 sqm
Land Size : 615 sqm
View : <https://www.magain.com.au/property/256-pimpala-road-woodcroft-sa/8434387>

[For full version visit the website](https://www.magain.com.au)

<https://www.magain.com.au>
Magain Real Estate

Shop 60, Seaford Central Shopping Centre, Commercial Road
08 8366 2230



Scale in metres. This drawing is for illustration purposes only. All measurements are approximate and details intended to be relied upon should be independently verified.

Produced by **The Fotobase Group**