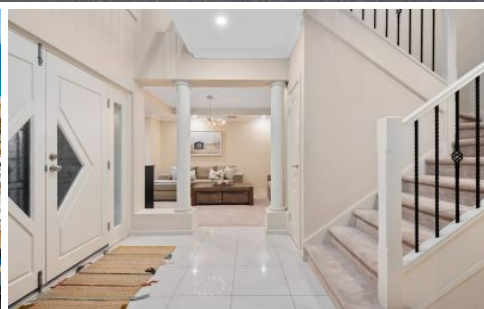


MAGAIN



20 Shoreline Avenue Sellicks Beach SA

4 2 4

Please contact Jemma for all your property advice.

Introducing 20 Shoreline Avenue, this stunning two-storey family home is located less than 400m to the beautiful Sellicks Beach on an 815sqm approx. allotment. Built in 2005 by Ian Woods home, this exquisite property boasts a perfect blend of contemporary design and modern amenities that will cater to your every need.

As you enter the property, you are welcomed by a grand entrance that seamlessly flows through the spacious and perfect floorplan with high ceilings and plenty of natural light throughout you'll instantly love the space and feel right at home. Starting at the front of the home, features a generous formal lounge that moves into the open-plan

[For full version visit the website](#)

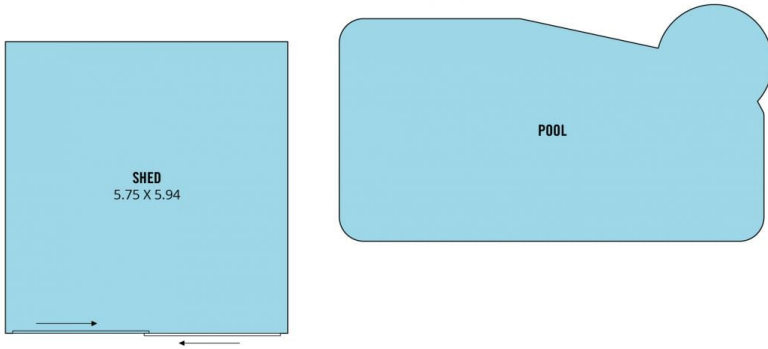
Type : House
Price : \$ 1,090,000
Building Size : 272 sqm
Land Size : 815 sqm
View : <https://www.magain.com.au/property/20-shoreline-avenue-sellicks-beach-sa/8434396>



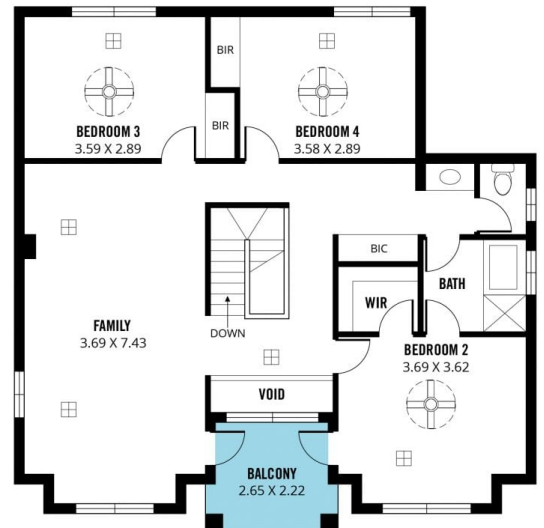
Jemma Turner
08 8366 2230

<https://www.magain.com.au>
Magain Real Estate

Shop 60, Seaford Central Shopping Centre, Commercial Road
08 8366 2230



LOWER LEVEL



UPPER LEVEL



Scale in metres. This drawing is for illustration purposes only. All measurements are approximate and details intended to be relied upon should be independently verified.

Produced by **The Fotobase Group**