

MAGAIN



30 Saphire Road Morphett Vale SA

3 1 2

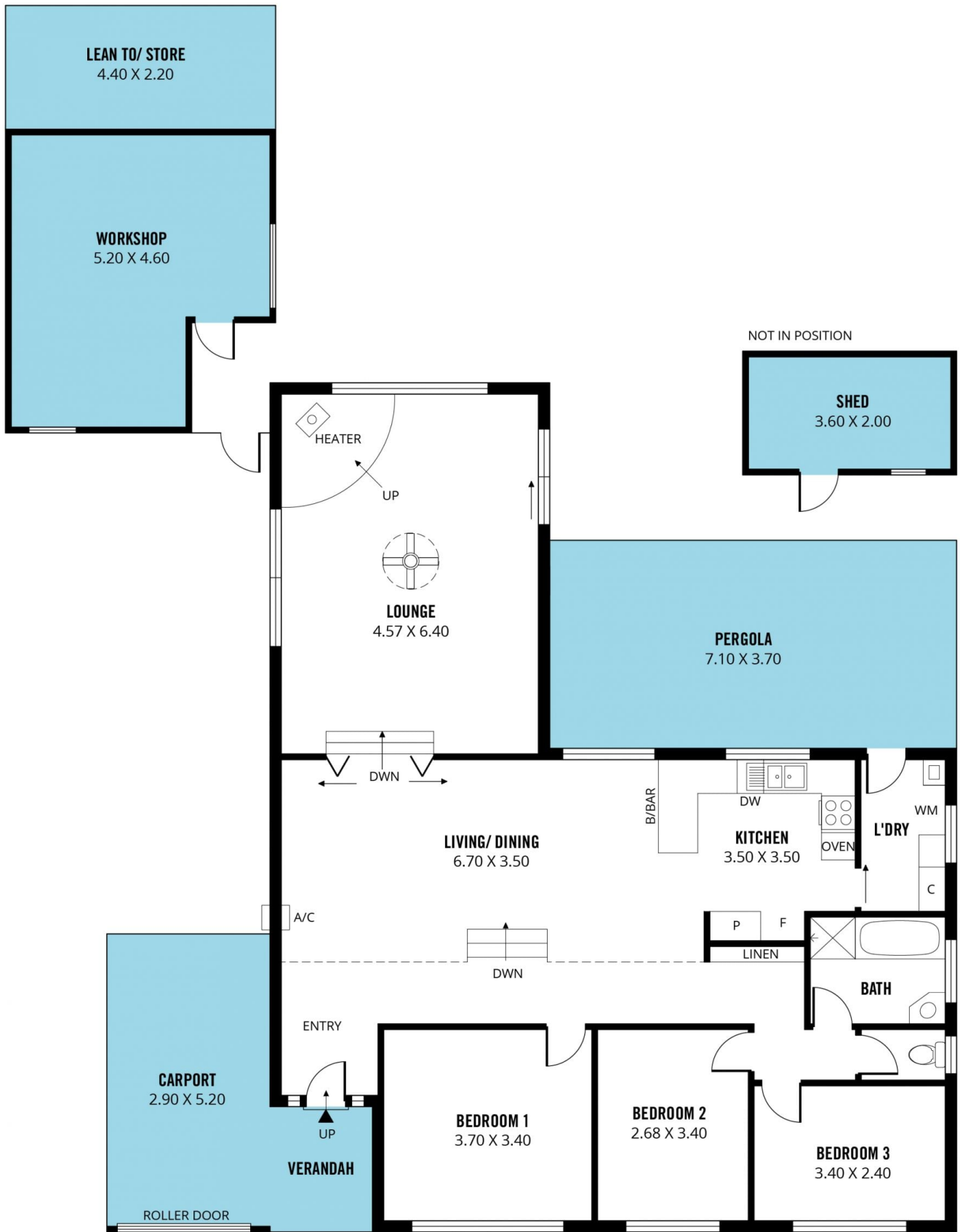
Superbly appointed, surprisingly spacious with a large family room - 30 Saphire Road will impress those seeking a little more for their money!

Peacefully situated, yet just moments from all local conveniences, the home has excellent kerbside appeal and upon stepping inside you will be impressed by new floor coverings and fresh paint throughout.

The delightful split-level floorplan includes open plan living and lofty vaulted ceilings, amplifying the sense of space & grandeur, and ensuring that living areas blend seamlessly with the large and very elegant timber kitchen, complete with pristine stainless steel oven and dishwasher, feature lighting and lots of bench space.

[For full version visit the website](https://www.magain.com.au/property/30-saphire-road-morphett-vale-sa/8434486)

Type : House
Building Size : 140 sqm
Land Size : 756 sqm
View : <https://www.magain.com.au/property/30-saphire-road-morphett-vale-sa/8434486>



Scale in metres. This drawing is for illustration purposes only. All measurements are approximate and details intended to be relied upon should be independently verified.

Produced by **The Fotobase Group**



Scale in metres. This drawing is for illustration purposes only. All measurements are approximate and details intended to be relied upon should be independently verified.

Produced by **The Fotobase Group**