

MAGAIN



23 Waterford Circuit Seaford Rise SA

5 2 3

-Inspections available by appointment only -

It is an absolute pleasure to offer to the open market this immaculately presented and extremely impressively styled property. As soon as you step inside this home, you will immediately appreciate the current owners' attention to detail and the high quality of the improvements they have made. It is a special property, and an inspection is highly recommended.

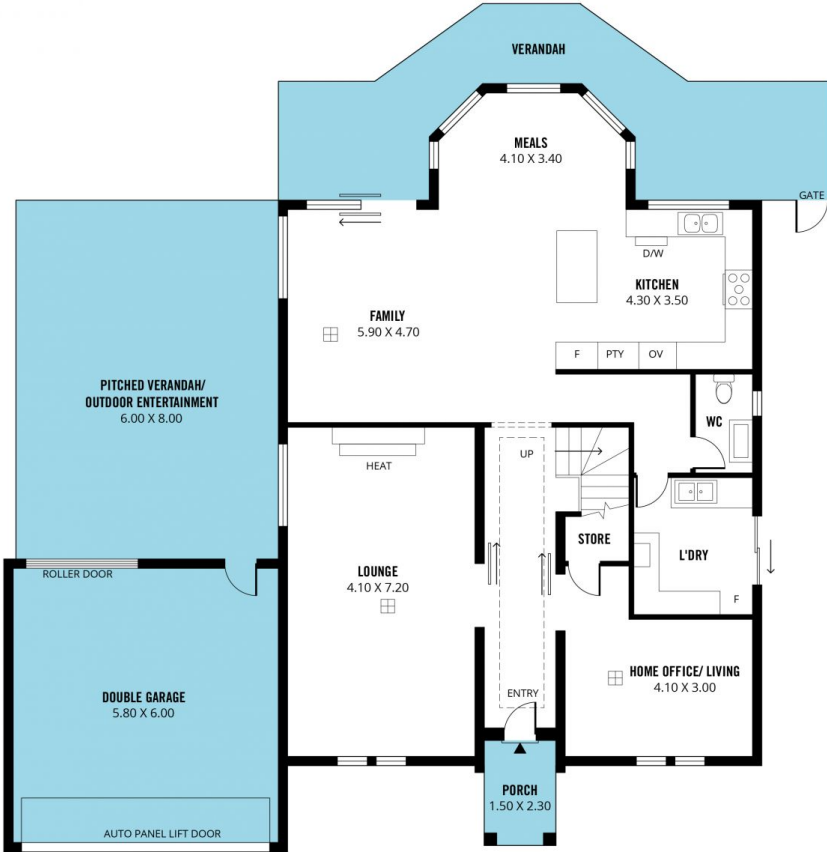
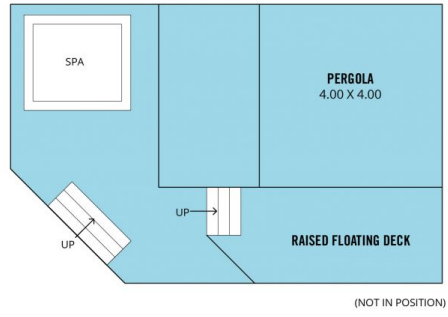
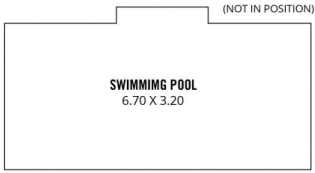
Boasting a striking street presence with its grand Georgian façade and well-established front garden, this property has fantastic kerb appeal. Set on a generous 690m² allotment with a double garage and driveway, it also includes the benefit of a third driveway with double gate access allowing

[For full version visit the website](https://www.magain.com.au/property/23-waterford-circuit-seaford-rise-sa/8434490)

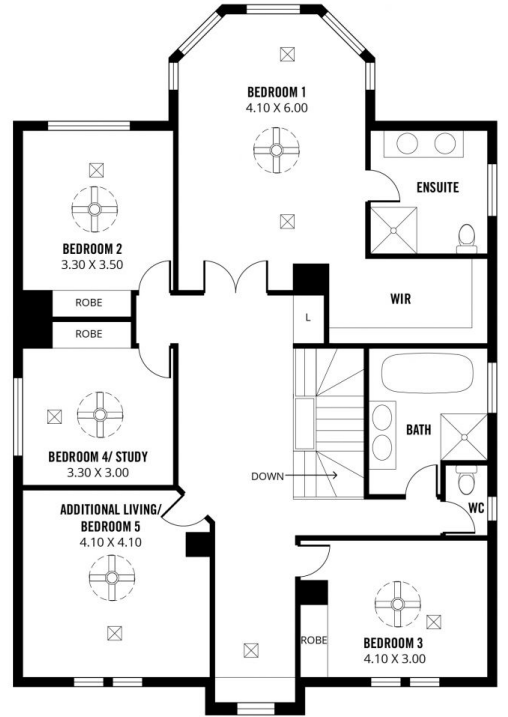
Type : House
Price : \$ 921,000
Building Size : 277 sqm
View : <https://www.magain.com.au/property/23-waterford-circuit-seaford-rise-sa/8434490>



David Hams
08 8366 2230



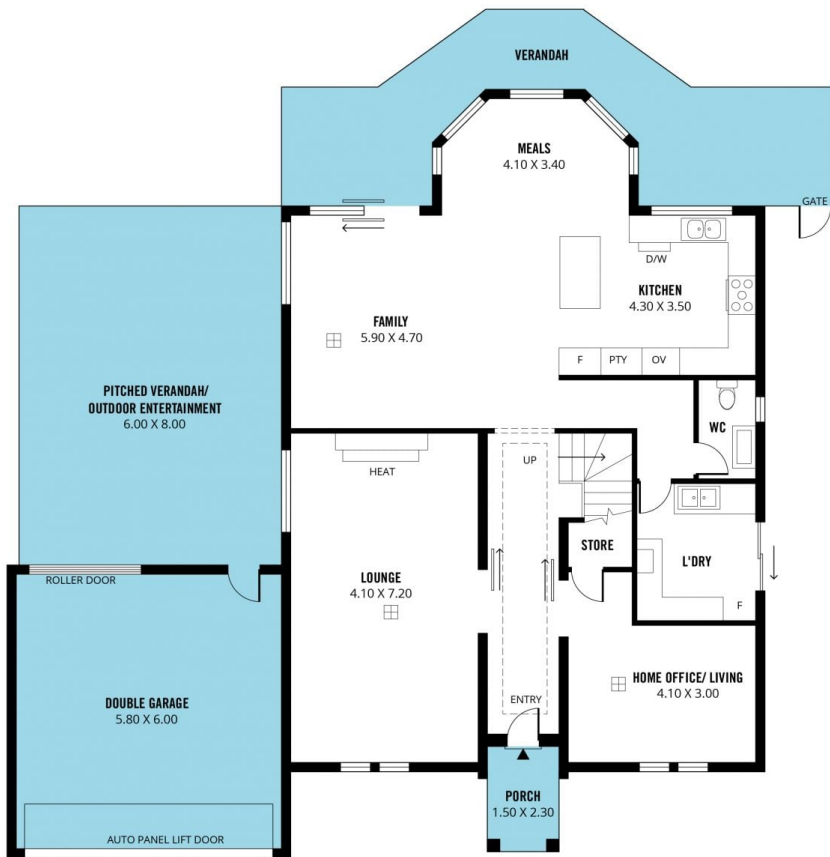
GROUND FLOOR



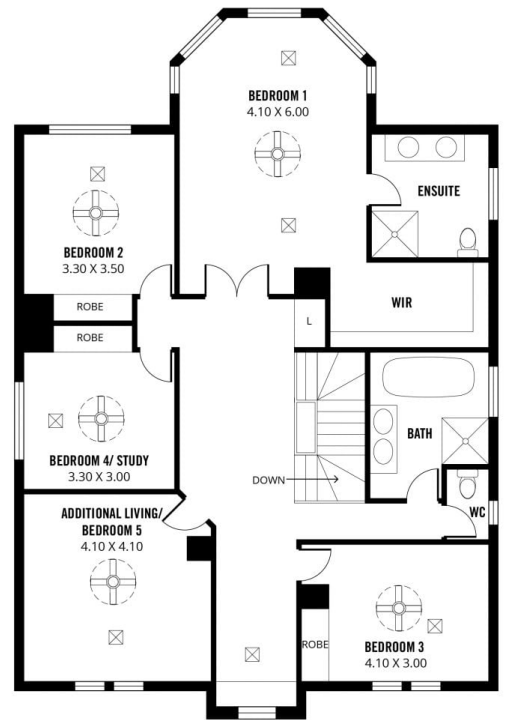
UPPER FLOOR



Scale in metres. This drawing is for illustration purposes only. All measurements are approximate and details intended to be relied upon should be independently verified.



GROUND FLOOR



UPPER FLOOR



Scale in metres. This drawing is for illustration purposes only. All measurements are approximate and details intended to be relied upon should be independently verified.

Produced by The Fotobase Group