

# MAGAIN



## 52 Germaine Street Morphett Vale SA

6 3 1

This property is located in a quiet street with easy access to shops, schools and transport and is just around the corner from a lovely reserve. It offers an extremely rare and unique opportunity and could be suitable for a range of different buyers...

The home has a good layout with a separate lounge room and the main bedroom that has a private ensuite bathroom, both located at the front of the home.

In the centre of the home is where you'll see the kitchen (gas) that overlooks the dining/family area. There is a slow combustion heater located in this section of the home. Bedrooms 2 and 3 are located at the rear and are serviced by a separate bathroom and toilet. There is a separate

[For full version visit the website](https://www.magain.com.au/property/52-germaine-street-morphett-vale-sa/8434502)

**Type** : House  
**Price** : \$ 460,000  
**Land Size** : 630 sqm  
**View** : <https://www.magain.com.au/property/52-germaine-street-morphett-vale-sa/8434502>

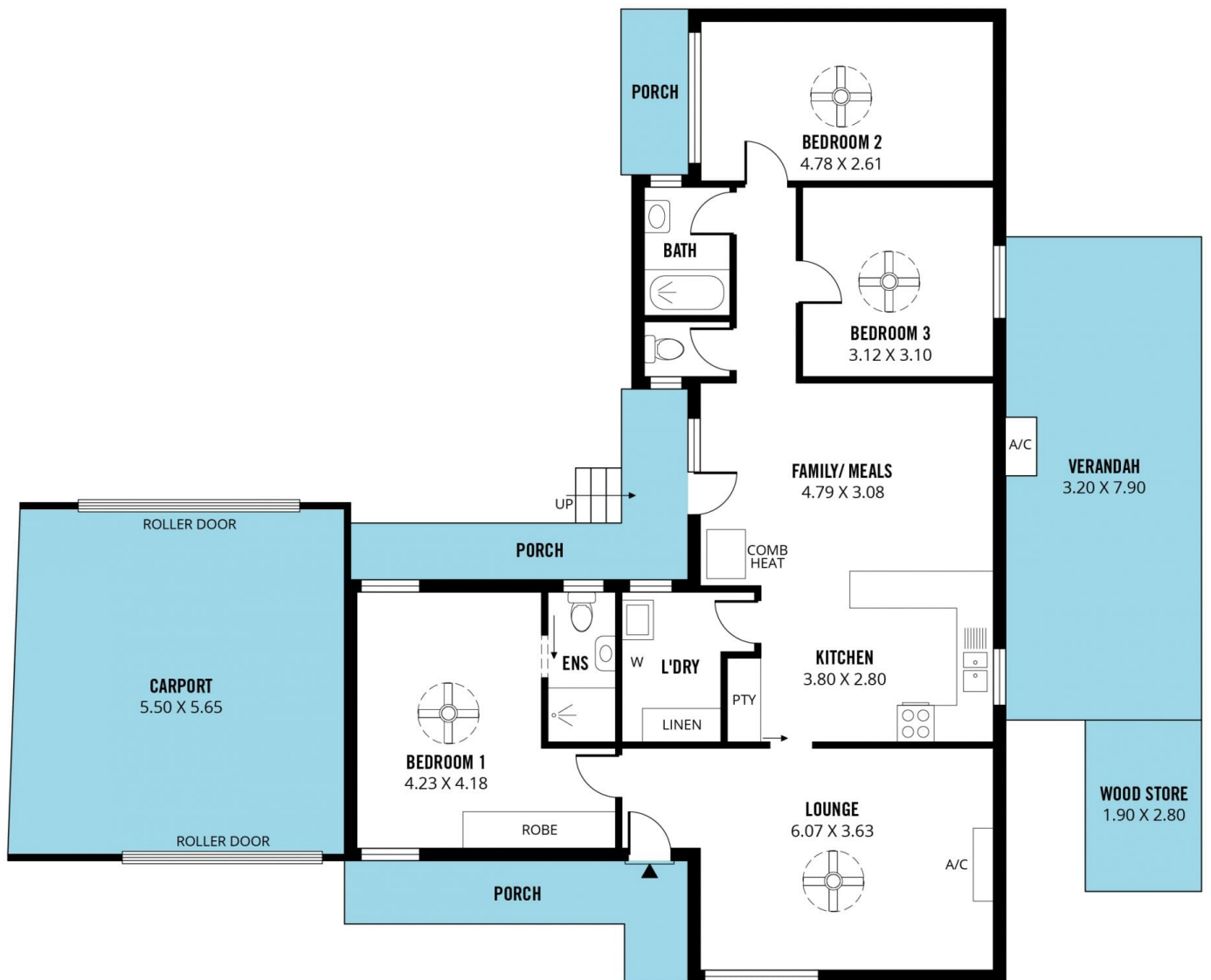
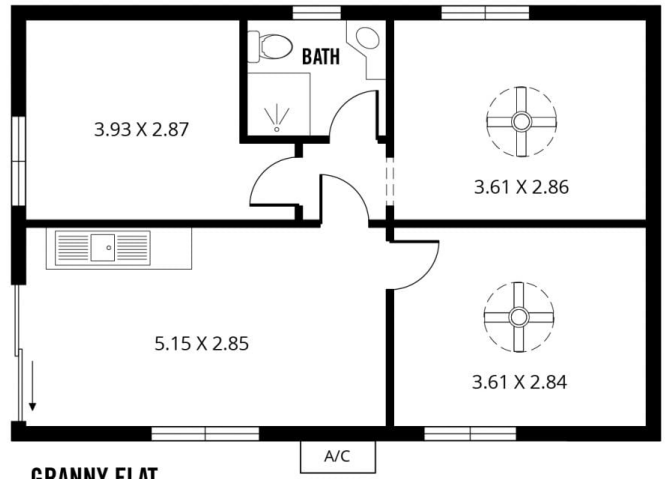


**David Hams**  
08 8366 2230



Scale in metres. This drawing is for illustration purposes only. All measurements are approximate and details intended to be relied upon should be independently verified.

Produced by **The Fotobase Group**



Scale in metres. This drawing is for illustration purposes only. All measurements are approximate and details intended to be relied upon should be independently verified.

Produced by **The Fotobase Group**