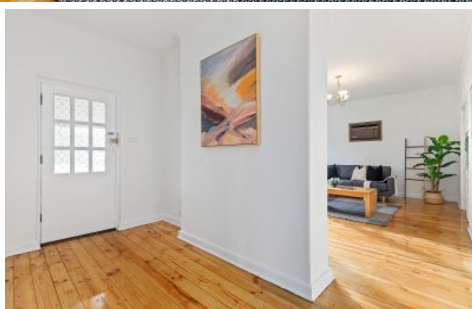


# MAGAIN



## 10 Hermitage Avenue Morphett Vale SA

2 1 2

A home of immense charm and impeccable presentation, 10 Hermitage Avenue is peacefully situated on a large block (18.29m frontage), just moments from local schools, shopping and facilities.

With excellent street appeal, the c1960 double-brick residence is bursting with character, boasting fresh paint and and sparkling real timber floors.

Upon stepping inside you will be greeted by lofty high ceilings and an abundance of natural light streaming in through lovely big windows. A large entry hall gives way to a gorgeous large formal lounge room, graced with attractive fireplace.

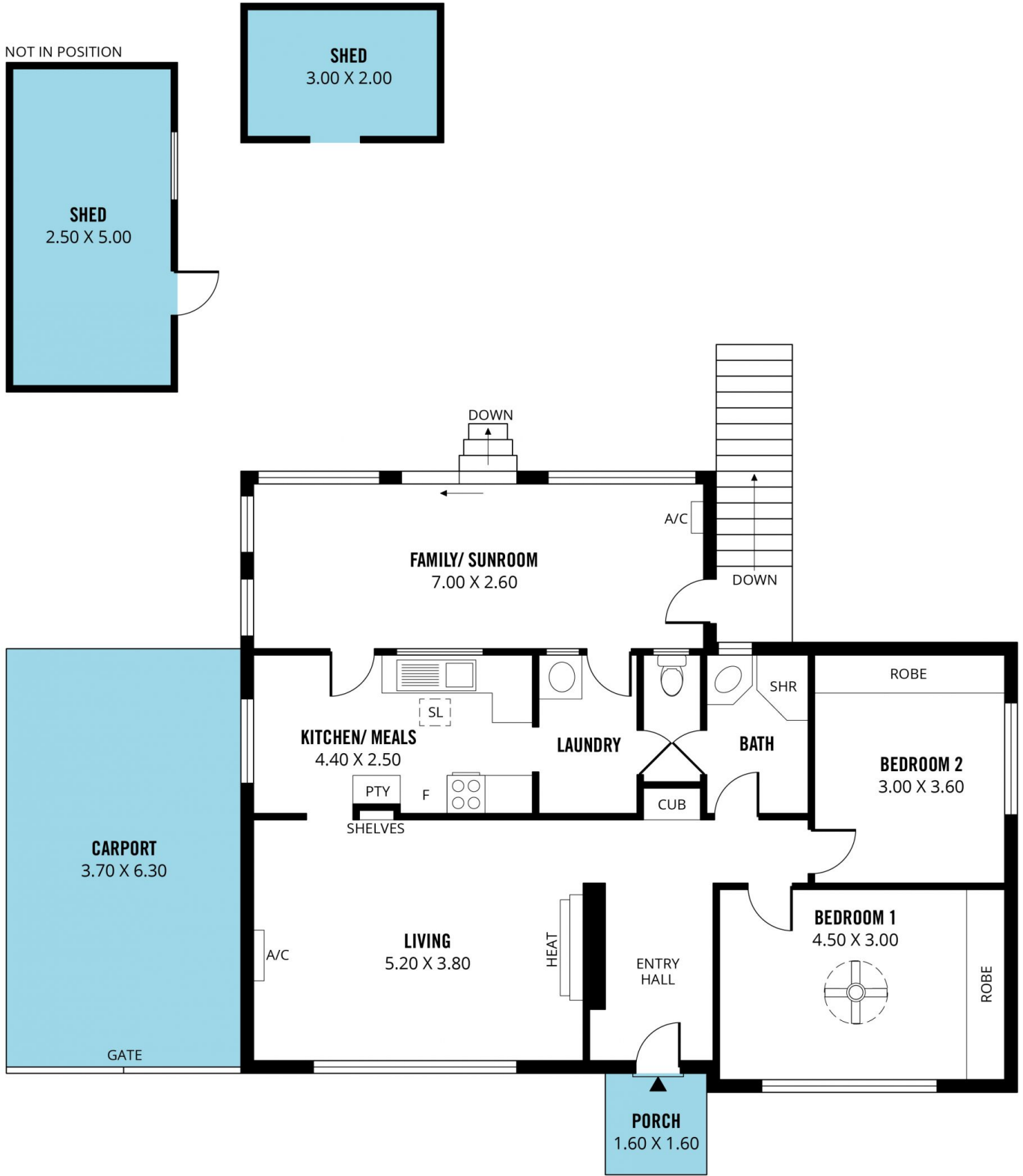
**Type** : House  
**Price** : \$ 506,500  
**Land Size** : 690 sqm  
**View** : <https://www.magain.com.au/property/10-hermitage-avenue-morphett-vale-sa/8434535>

[For full version visit the website](https://www.magain.com.au)

<https://www.magain.com.au>  
Magain Real Estate

Shop 60, Seaford Central Shopping Centre, Commercial Road  
08 8366 2230

NOT IN POSITION



Scale in metres. This drawing is for illustration purposes only. All measurements are approximate and details intended to be relied upon should be independently verified.

Produced by **The Fotobase Group**