

MAGAIN



76 Rowley Road Aldinga Beach SA

4  1  3 

Located in the beautiful beachside suburb of Aldinga Beach sits 76 Rowley Road. Built in 1984 this excellent home is positioned facing Kitto Crescent on a generous 680sqm (approx.) corner allotment boasting double gate, drive through access to the large shed off Rowley Road, and drive through access through the carport. Arriving at the home you'll love the low maintenance front yard with ample amounts of off street parking. Inside the home offers a flow through kitchen, living and dining area filled with natural light through the front lounge room windows.

The kitchen possesses a great amount of cupboard and bench space (including a walk-in pantry) and overlooks the family/meals room out to the great outdoor entertaining area. This lovely family home offers four good sized

Type : House
Price : \$ 555,000
Building Size : 122 sqm
Land Size : 680 sqm
View : <https://www.magain.com.au/property/76-rowley-road-aldinga-beach-sa/8434551>

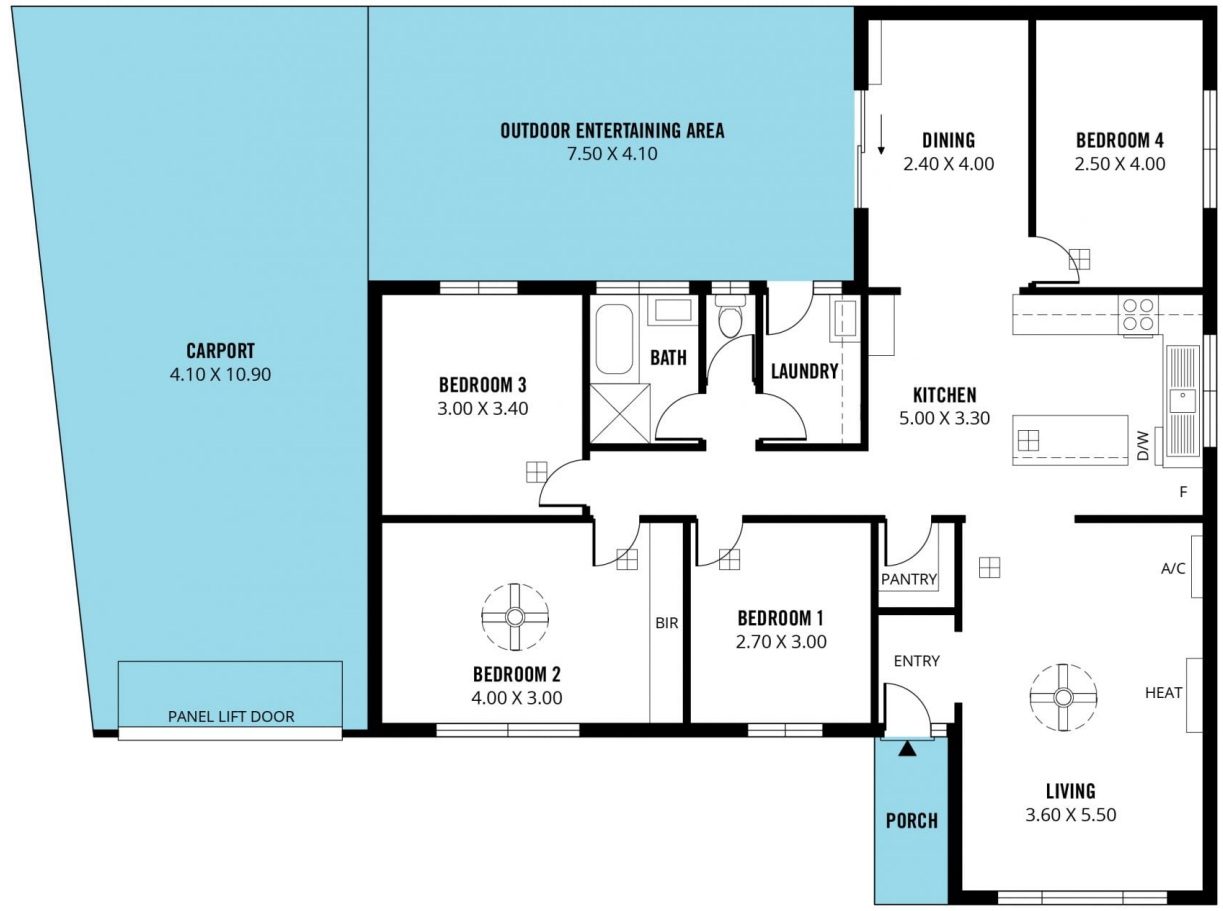
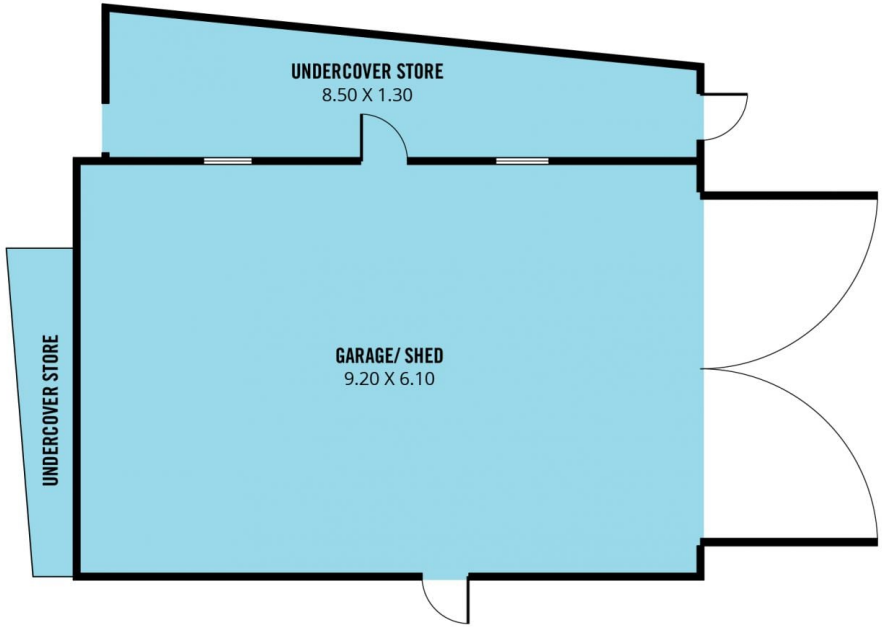


Jemma Turner
08 8366 2230

[For full version visit the website](https://www.magain.com.au)

<https://www.magain.com.au>
Magain Real Estate

Shop 60, Seaford Central Shopping Centre, Commercial Road
08 8366 2230



Scale in metres. This drawing is for illustration purposes only. All measurements are approximate and details intended to be relied upon should be independently verified.

Produced by **The Fotobase Group**