

MAGAIN



25 Buccaneer Drive Seaford Rise SA

4 2 2

This extremely well maintained and presented home is located on a quiet street and overlooks the Pedler Creek reserve and linear walking/bike track which makes it a really special place.

The easy care front garden and the properties position give a strong street appeal. There is a paved driveway that leads to a carport that has drive-through access to the rear yard via double gates and there is an additional off street parking space if required.

The separate entrance flows through to the good sized formal lounge room that has a ceiling fan and boasts large picture windows that frame a nice outlook over the front yard and the reserve in the distance. There is an adjacent

Type : House
Price : \$ 690,000
Building Size : 192 sqm
Land Size : 766 sqm
View : <https://www.magain.com.au/property/25-buccaneer-drive-seaford-rise-sa/8434583>

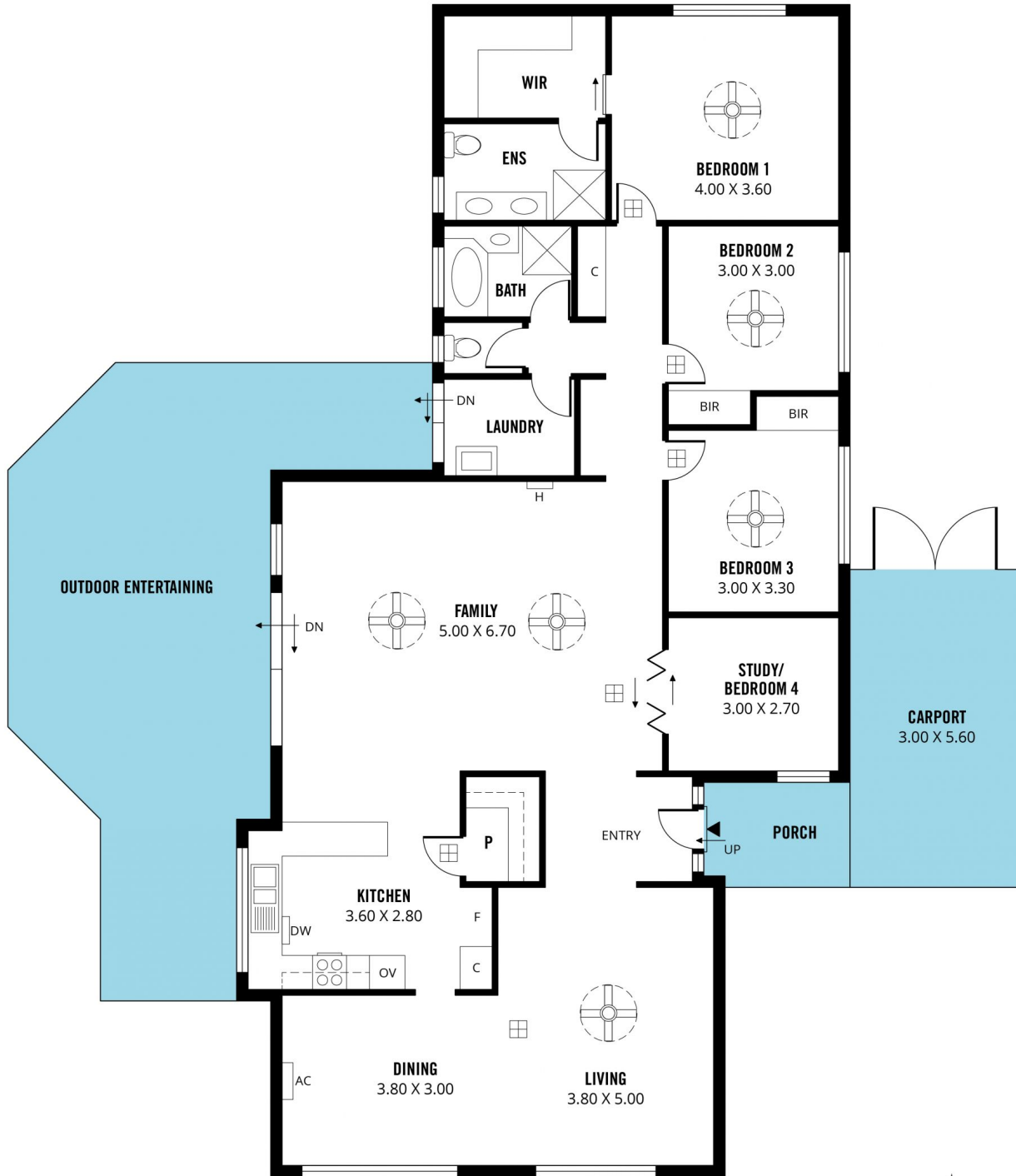
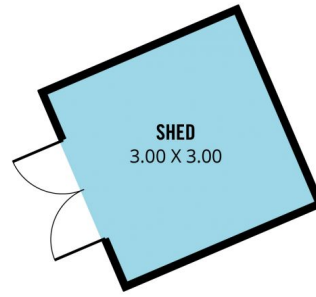


David Hams
08 8366 2230

[For full version visit the website](https://www.magain.com.au)

<https://www.magain.com.au>
Magain Real Estate

Shop 60, Seaford Central Shopping Centre, Commercial Road
08 8366 2230



Scale in metres. This drawing is for illustration purposes only. All measurements are approximate and details intended to be relied upon should be independently verified.

Produced by **The Fotobase Group**