

MAGAIN



9 Warawee Place Hallett Cove SA

3 1 1

On a no-through street surrounded by quality homes in the popular beachside suburb of Hallett Cove, this striking three bedroom family home with ocean glimpses and wonderful views overlooking Waterfall Creek. On an elevated allotment only a minute walk from the fantastic Manoora Drive Reserve, this fabulous home has plenty of room for a growing young family or savvy portfolio addition for the investor.

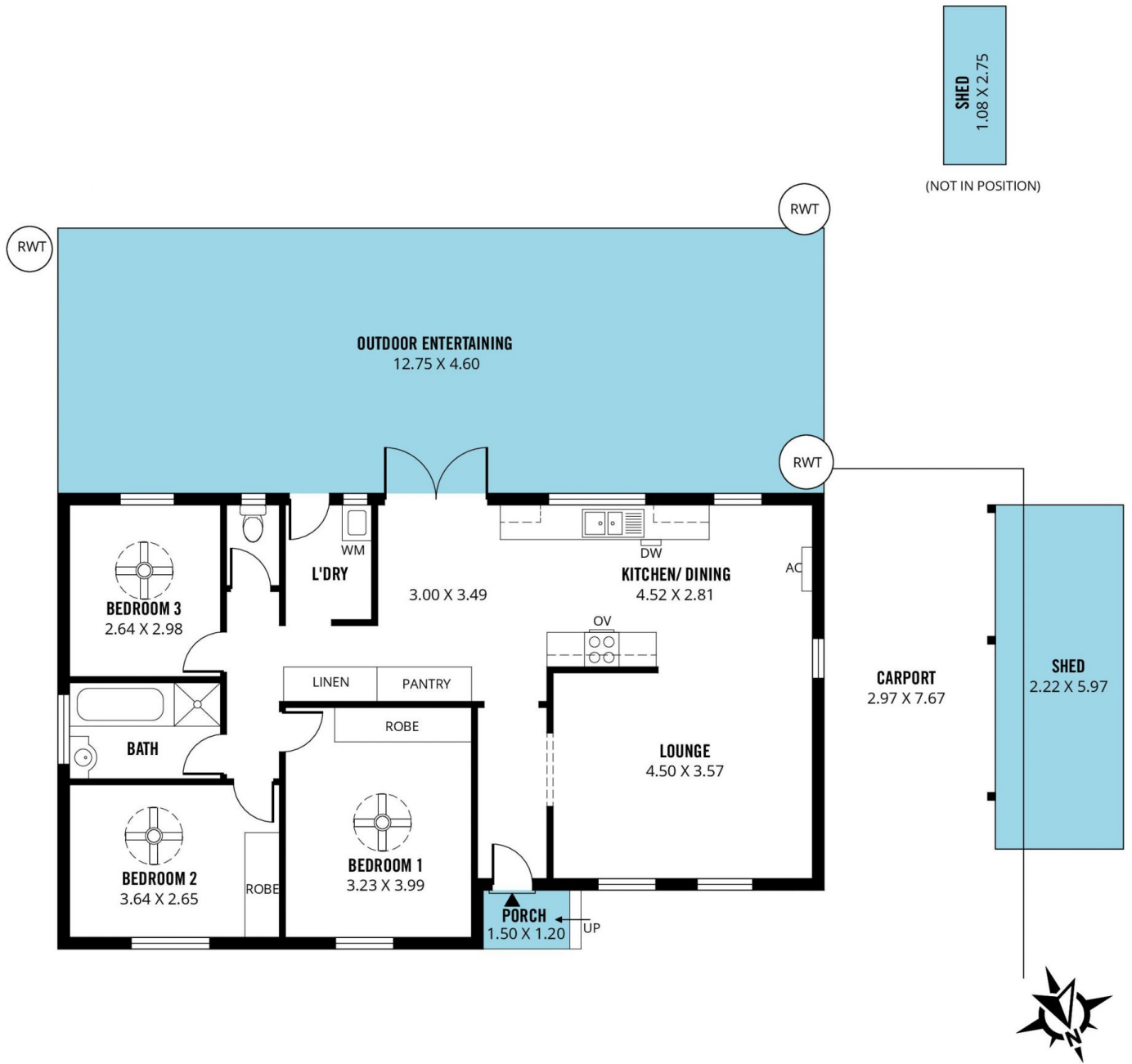
Upon entry you are greeted by a spacious L-shape lounge and dining room for a house of this size. With modern neutral flooring, recently painted and natural light throughout it gives the instant feeling of space and warmth while the cozy split system for heating and cooling is keeping you comfortable year round.

[For full version visit the website](https://www.magain.com.au/property/9-warawee-place-hallett-cove-sa/8434588)

Type : House
Price : \$ 667,000
Building Size : 111 sqm
Land Size : 630 sqm
View : <https://www.magain.com.au/property/9-warawee-place-hallett-cove-sa/8434588>



Jemma Turner
08 8366 2230



Scale in metres. This drawing is for illustration purposes only. All measurements are approximate and details intended to be relied upon should be independently verified.

Produced by **The Fotobase Group**