

# MAGAIN



40 Adams Road Sheidow Park SA

3 1 2

Please contact Jemma Turner from Magain Real Estate for all your property advice.

Welcome to this beautifully presented home located in the sought-after neighbourhood of Sheidow Park. This tasteful home is situated with views overlooking the oval of Sheidow Park Primary School and offers a contemporary living experience with modern features and a versatile floorplan for comfort and convenience.

Arriving at the property you'll instantly love the low maintenance and well looked after front yard, offering ample amounts of off street parking including a wide drive way to park a caravan/motorhome. The front yard is finished off with an automatic irrigation system of pop up

[For full version visit the website](https://www.magain.com.au/property/40-adams-road-sheidow-park-sa/8434636)

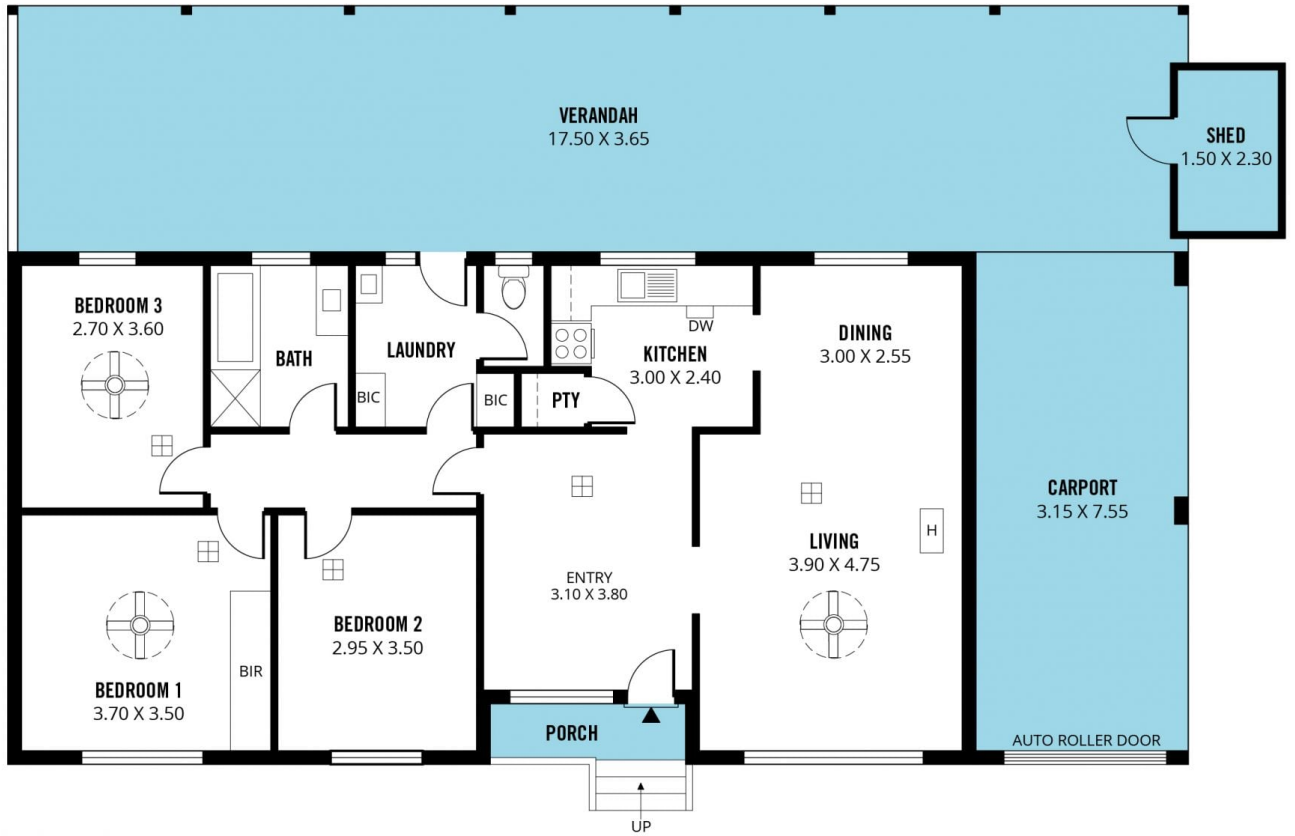
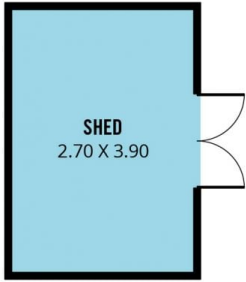
**Type** : House  
**Price** : \$ 652,000  
**Building Size** : 116 sqm  
**Land Size** : 610 sqm  
**View** : <https://www.magain.com.au/property/40-adams-road-sheidow-park-sa/8434636>



**Jemma Turner**  
08 8366 2230

<https://www.magain.com.au>  
Magain Real Estate

Shop 60, Seaford Central Shopping Centre, Commercial Road  
08 8366 2230



Scale in metres. This drawing is for illustration purposes only. All measurements are approximate and details intended to be relied upon should be independently verified.

Produced by **The Fotobase Group**