

MAGAIN



36 Barton Drive Trott Park SA

4 🛏 2 🚿 2 🚗

Nestled amongst other quality homes and conveniently located with easy access to schools, shops and transport makes this impressively updated home worth some serious consideration...

This ex-Hickinbotham show home features a separate tiled entrance that flows through to the formal lounge room located at the front of the home and features impressive floating floors and premium plantation shutters that really add to the overall appeal of the space. Across the entrance is the good sized main bedroom that comes complete with classy built-in robes, a walk-in robe area and a tastefully renovated ensuite bathroom. There is a lovely bay window that also comes with plantation shutters fitted.

Type : House
Price : \$ 751,000
Building Size : 153 sqm
Land Size : 671 sqm
View : <https://www.magain.com.au/property/36-barton-drive-trott-park-sa/8434645>

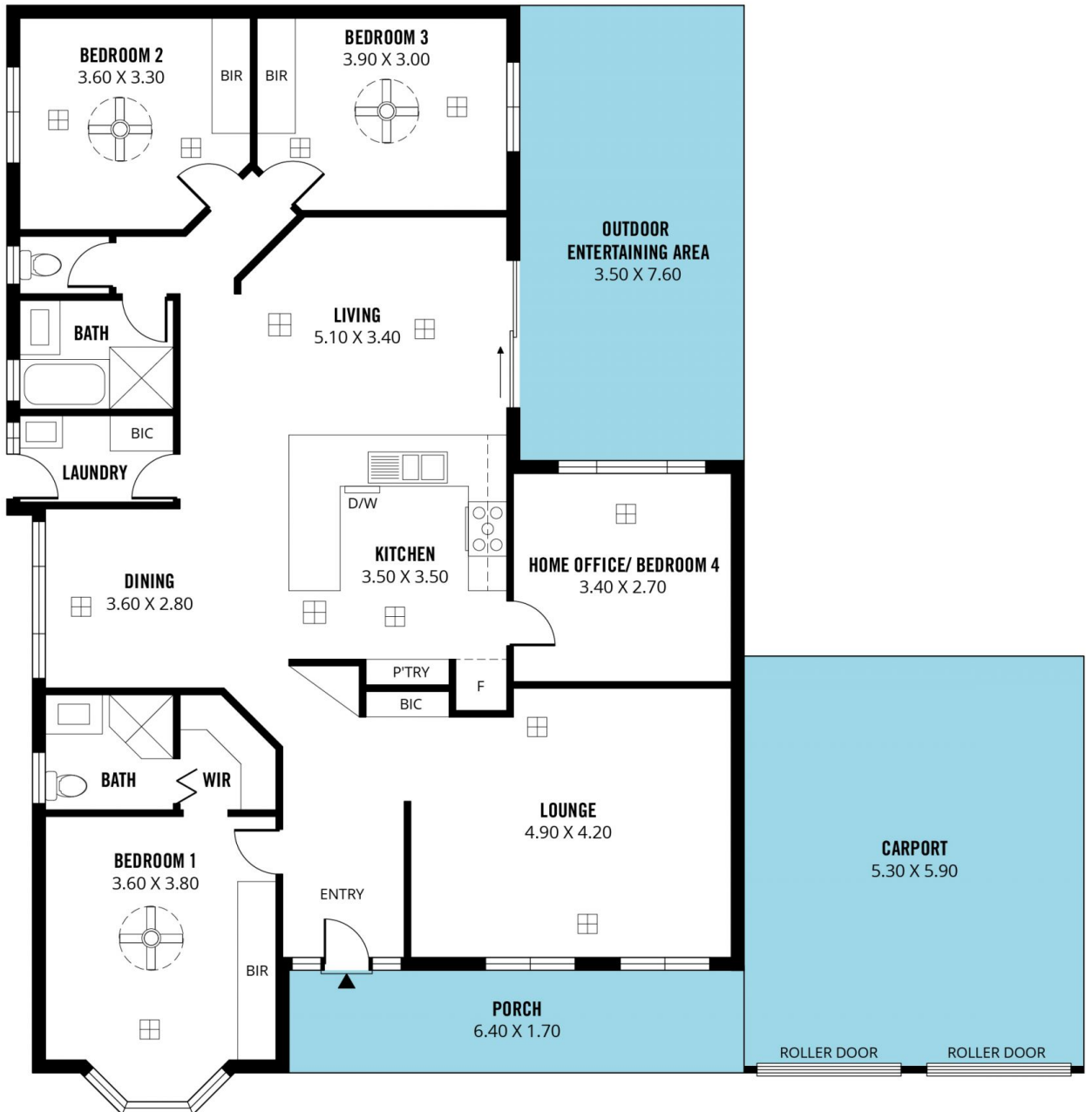
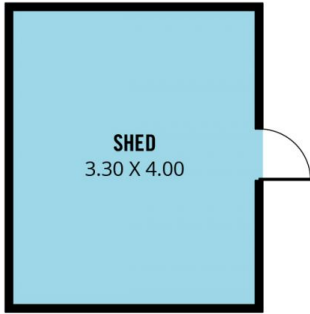


David Hams
08 8366 2230

[For full version visit the website](https://www.magain.com.au)

<https://www.magain.com.au>
Magain Real Estate

Shop 60, Seaford Central Shopping Centre, Commercial Road
08 8366 2230



Scale in metres. This drawing is for illustration purposes only. All measurements are approximate and details intended to be relied upon should be independently verified.

Produced by **The Fotobase Group**