

MAGAIN



90 George Francis Drive Mount Compass SA

4 🚗 2 🚗 2 🚗

Please contact Jemma Turner from Magain Real Estate for all your property advice.

Sitting proudly in the serene landscape of Mount Compass, 90 George Francis Drive offers a tranquil retreat with captivating vistas of the rolling foothills. Built in 2004 by Sarah Homes on a generous 875sqm (approx.) block, this home is a haven of comfort and style.

Stepping onto the front decked alfresco, you're greeted by breathtaking panoramic views that stretch over the mount compass golf course and a stunning backdrop of rolling foothills, the perfect space for unwinding at any time of day. Whether you prefer a glass of wine in the evening as the sun sets, casting a warm glow over the scenery, or a cup of

Type : House
Price : \$ 639,000
Building Size : 131 sqm
Land Size : 875 sqm
View : <https://www.magain.com.au/property/90-george-francis-drive-mount-compass-sa/8434715>

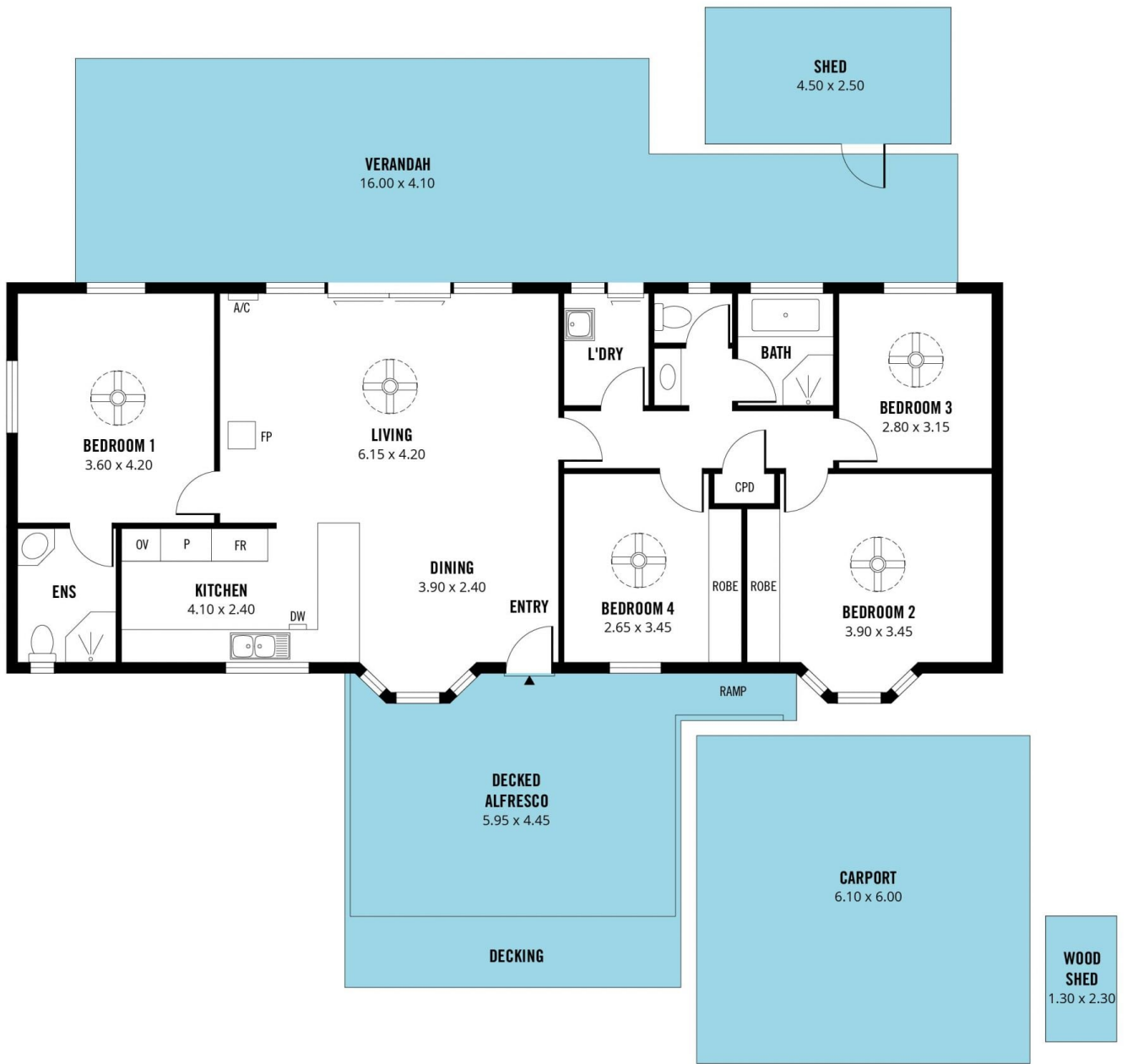
[For full version visit the website](#)



Jemma Turner
08 8366 2230

<https://www.magain.com.au>
Magain Real Estate

Shop 60, Seaford Central Shopping Centre, Commercial Road
08 8366 2230



Scale in metres. This drawing is for illustration purposes only. All measurements are approximate and details intended to be relied upon should be independently verified.

Produced by The Fotobase Group