

# MAGAIN



## 29 Wakefield Avenue Morphett Vale SA

3 1 2

Please contact David for all your property advice.

Built in 1972, this double brick home is set on a good sized 760m<sup>2</sup> (approx) allotment, free of any Easements and/or Encumbrances with a 20.7m (approx) frontage, has easy access to schools, transport and shops and could be suitable for a range of different buyers.

This home has a basket range façade, a neat front yard and a driveway that leads to a high clearance carport area. There are double gates at the rear of the carport that provide drive through access through to the rear yard and a 5.5m x 7.4m powered garage/workshop.

There is a separate entrance that flows into a spacious

[For full version visit the website](#)

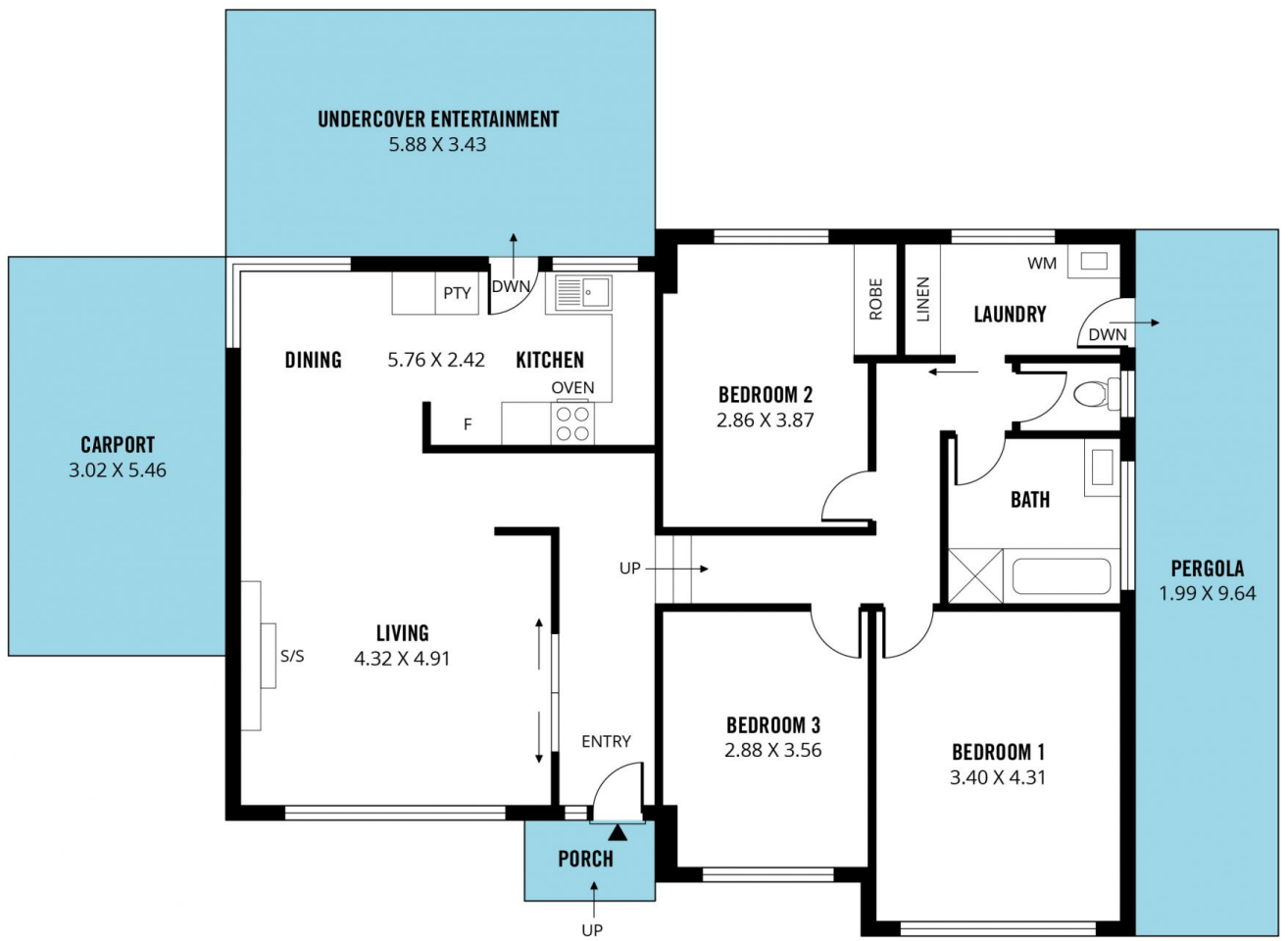
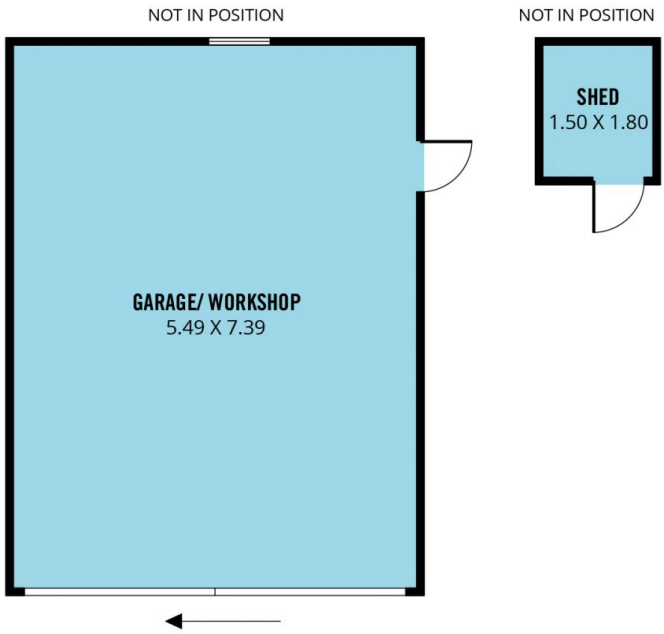
**Type** : House  
**Price** : \$ 551,000  
**Building Size** : 118 sqm  
**Land Size** : 760 sqm  
**View** : <https://www.magain.com.au/property/29-wakefield-avenue-morphett-vale-sa/8434733>



**David Hams**  
08 8366 2230

<https://www.magain.com.au>  
Magain Real Estate

Shop 60, Seaford Central Shopping Centre, Commercial Road  
08 8366 2230



Scale in metres. This drawing is for illustration purposes only. All measurements are approximate and details intended to be relied upon should be independently verified.

Produced by **The Fotobase Group**