

# MAGAIN



## 29 Glyndale Grove Huntfield Heights SA

3 1 3

Please contact Jemma for all your property advice.

Situated in Huntfield Heights, just moments from Cardijn College, Noarlunga Centre, train station, Southern Expressway and just a short drive to Port Noarlunga Beach - you will find this wonderful home on a generous 743sqm (approx.) allotment offers a versatile floorplan, a comfortable living space and convenient location, making it an ideal choice for families, first home buyers, investor and developers (STCC) .

Upon arrival you'll love the low maintenance and spacious front yard with ample amount off street parking and additional drive through access through to a double garage towards the back of the home.

[For full version visit the website](#)

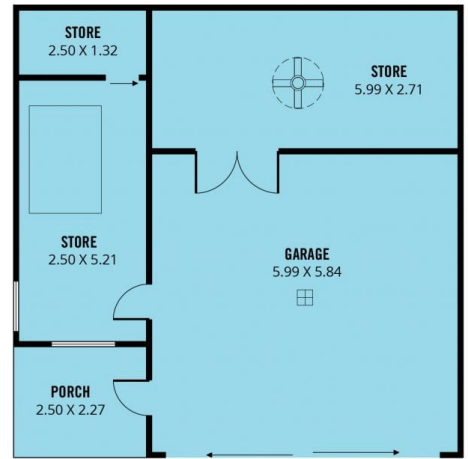
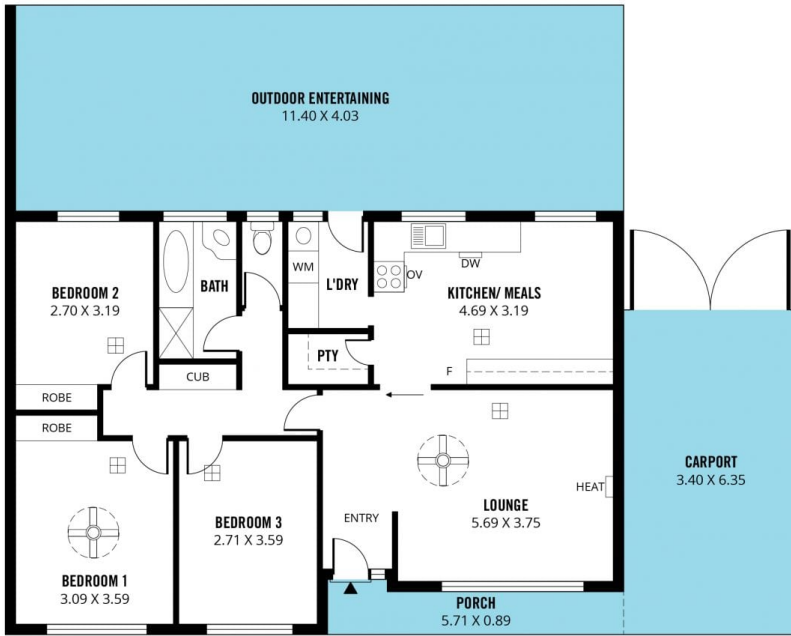
**Type** : House  
**Price** : \$ 575,000  
**Building Size** : 117 sqm  
**Land Size** : 743 sqm  
**View** : <https://www.magain.com.au/property/29-glyndale-grove-huntfield-heights-sa/8434786>



**Jemma Turner**  
08 8366 2230

<https://www.magain.com.au>  
Magain Real Estate

Shop 60, Seaford Central Shopping Centre, Commercial Road  
08 8366 2230



NOT IN POSITION



Scale in metres. This drawing is for illustration purposes only. All measurements are approximate and details intended to be relied upon should be independently verified.

Produced by **The Fotobase Group**