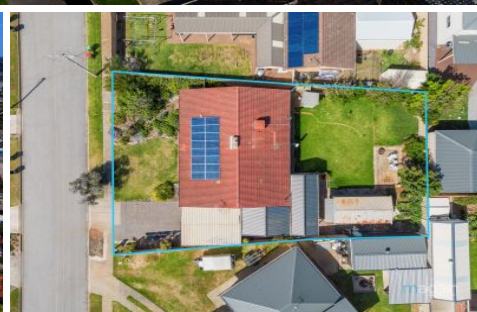


# MAGAIN



12 Mcrae Road Port Noarlunga South SA

3  2  3 

Please contact Jason for all your property advice.

This appealing family home is located just a breath away from the beautiful and highly popular beach at Southport and will tick all the boxes with its functional layout. Situated on approximately 780m<sup>2</sup> of land with a North facing aspect and a 24m frontage the opportunities are here for the future. Walking into the home one will not only admire the polished timber floors but the raked ceiling in the lounge room which flows into the dining room and creates a peaceful mood of space and style. Incorporating 3 bedrooms with the master having wir and stunning en-suite and beds 2 and 3 are of good size. The kitchen has a breakfast bar with induction cook top, wall oven, pantry and plenty of storage overlooking the rear yard and with

**Type** : House  
**Price** : \$ 765,000  
**Building Size** : 160 sqm  
**Land Size** : 780 sqm  
**View** : <https://www.magain.com.au/property/12-mcrae-road-port-noarlunga-south-sa/8434810>



**Jason Smart**  
08 8366 2230

[For full version visit the website](https://www.magain.com.au)

<https://www.magain.com.au>  
Magain Real Estate

Shop 60, Seaford Central Shopping Centre, Commerci S  
08 8366 2230



Scale in metres. This drawing is for illustration purposes only. All measurements are approximate and details intended to be relied upon should be independently verified.

Produced by **The Fotobase Group**