

# MAGAIN



## 14 Rogana Crescent Hallett Cove SA

3 2 2

Please contact Jemma Turner from Magain Real Estate for all your property advice.

In the beautiful suburb of Hallett Cove on a generous 654sqm approx. allotment stands 14 Rogana Crescent. Built in 1981 this home offers three bedrooms, two bathrooms and is ideal for any first home buyer, downsizer, or investor.

Upon arrival you'll instantly love well-kept front yard and ample amount of off street parking this home has to offer, including side gate access into the backyard. Before stepping inside, turn around on your front porch to see glimpses of the ocean views. The home is neat and well-presented throughout. The front lounge is filled with

[For full version visit the website](https://www.magain.com.au/property/14-rogana-crescent-hallett-cove-sa/8434840)

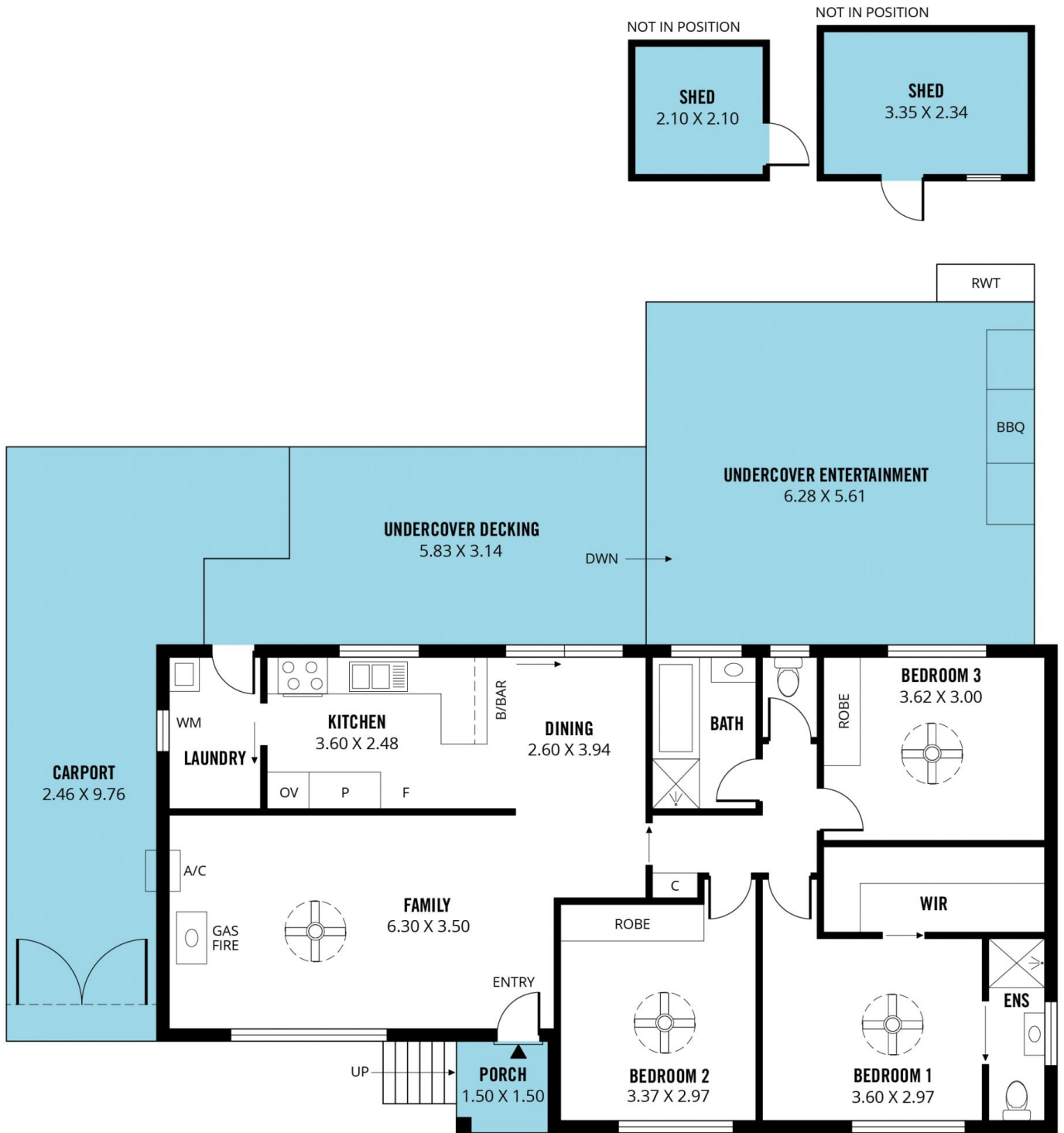
**Type** : House  
**Price** : \$ 705,000  
**Building Size** : 113 sqm  
**Land Size** : 654 sqm  
**View** : <https://www.magain.com.au/property/14-rogana-crescent-hallett-cove-sa/8434840>



**Jemma Turner**  
08 8366 2230

<https://www.magain.com.au>  
Magain Real Estate

Shop 60, Seaford Central Shopping Centre, Commercial Road  
08 8366 2230



Scale in metres. This drawing is for illustration purposes only. All measurements are approximate and details intended to be relied upon should be independently verified.

Produced by **The Fotobase Group**