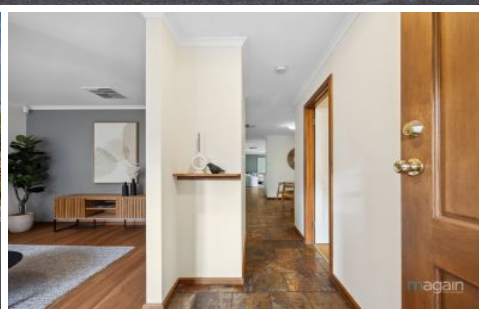


MAGAIN



9 Martinique Drive Seaford Rise SA

3 2 2

Please contact David Hams from Magain Real Estate for all your property advice.

Situated on a quiet no through road with easy access to schools, shops, transport and walking/bike trails. This neat home boasts a Bluestone facade and is set on a corner block, perfectly positioned to enjoy all that Seaford Rise has to offer.

After entering the separate entrance foyer you are met with a good sized lounge to the left, with a ceiling fan and an outlook over to the reserve and trails across the road. To the right is the large Master Bedroom with Built-in-robos, a Walk-in-robe and a private ensuite bathroom. There are sliding glass doors that lead to the rear undercover

[For full version visit the website](https://www.magain.com.au/property/9-martinique-drive-seaford-rise-sa/8434898)

Type : House
Price : \$ 700,000
Building Size : 144 sqm
Land Size : 472 sqm
View : <https://www.magain.com.au/property/9-martinique-drive-seaford-rise-sa/8434898>



David Hams
08 8366 2230



Mitch Portlock
08 8366 2230

<https://www.magain.com.au>
Magain Real Estate

Shop 60, Seaford Central Shopping Centre, Commercial Road
08 8366 2230

SHED
3.97 X 2.20

