

MAGAIN



4 Sanctuary Court Morphett Vale SA

3 2 1

Please contact Jemma Turner from Magain Real Estate for all your property advice.

Embrace the contemporary living with this modern three-bedroom home, ideal for first-time buyers, downsizers, or savvy investors. This low maintenance and recently freshened up home built in 2017 by Stirling Homes offers a well-designed layout and all the modern conveniences, boasting easy access to shopping, schooling and transport with Christie Creek reserve and playground just a casual stroll away.

The heart of the home, a spacious open plan living and dining area seamlessly connects with a well-equipped kitchen, providing a flexible space ideal for family relaxation

[For full version visit the website](https://www.magain.com.au/property/4-sanctuary-court-morphett-vale-sa/8434932)

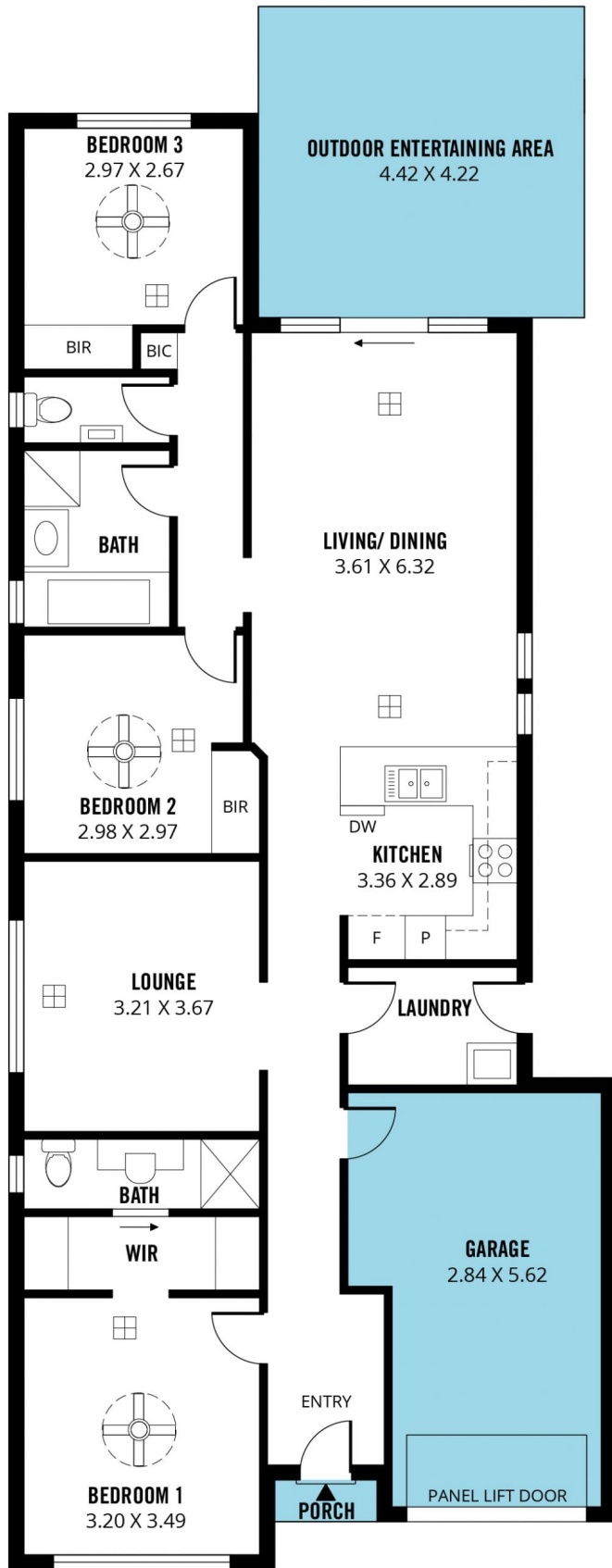
Type : House
Price : \$ 685,200
Building Size : 137 sqm
Land Size : 300 sqm
View : <https://www.magain.com.au/property/4-sanctuary-court-morphett-vale-sa/8434932>



Jemma Turner
08 8366 2230

<https://www.magain.com.au>
Magain Real Estate

Shop 60, Seaford Central Shopping Centre, Commercial Road
08 8366 2230



Scale in metres. This drawing is for illustration purposes only. All measurements are approximate and details intended to be relied upon should be independently verified. Produced by **The Fotobase Group**