

MAGAIN



8/27 Epstein Drive Morphett Vale SA

2 1 1

Please contact Jemma Turner from Magain Real Estate for all your property advice.

Welcome to 8/27 Epstein Drive, Morphett Vale. A spacious unit located at the rear of a quiet group, securely tucked away at the end of a cul-de-sac. This delightful home has been freshly painted and features new carpets, ensuring a modern and inviting atmosphere.

This 2-bedroom, 1-bath unit perfectly blends comfort and convenience, promising a tranquil living experience. As you enter, you are greeted by a light-filled living area that flows seamlessly into the dining and kitchen spaces, creating a welcoming and open ambiance.

[For full version visit the website](https://www.magain.com.au/property/827-epstein-drive-morphett-vale-sa/8434959)

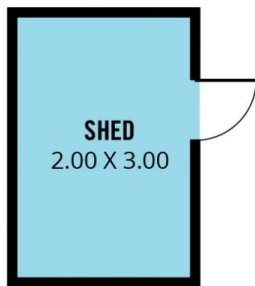
Type : Unit
Price : \$ 560,000
Building Size : 82 sqm
View : <https://www.magain.com.au/property/827-epstein-drive-morphett-vale-sa/8434959>



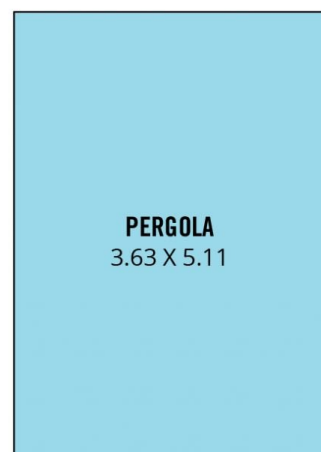
Jemma Turner
08 8366 2230

<https://www.magain.com.au>
Magain Real Estate

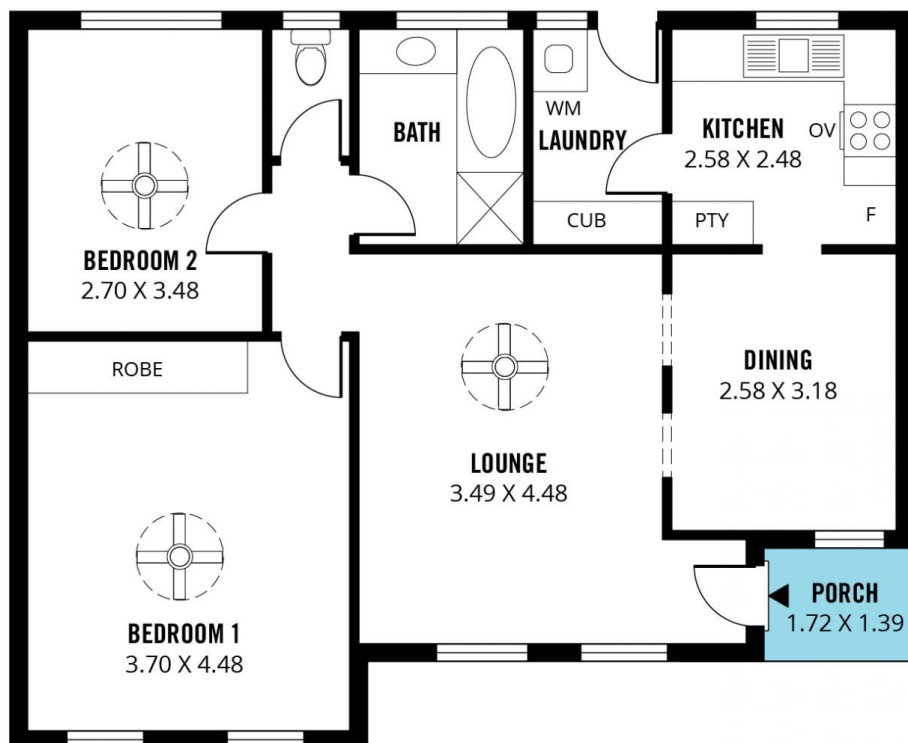
Shop 60, Seaford Central Shopping Centre, Commercial Road
08 8366 2230



(NOT IN POSITION)



(NOT IN POSITION)



(NOT IN POSITION)



Scale in metres. This drawing is for illustration purposes only. All measurements are approximate and details intended to be relied upon should be independently verified.

Produced by **The Fotobase Group**