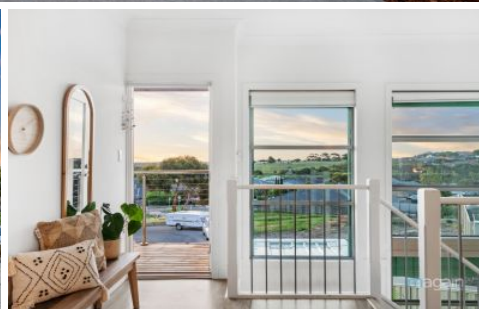


# MAGAIN



## 5 Braydon Mews Noarlunga Downs SA

4 🛏 3 🚿 2 🚗

Please contact David from Magain Real Estate for all your property advice.

This ultra impressive and very well maintained and presented home is tucked away in a quiet Cul-De-Sac location boasting fabulous views that stretch over the Onkaparinga River nature reserve all the way to the Port Noarlunga coastline.

The North West orientation allows for plenty of natural light to fill this home and it's location, within easy access to a number of schooling options, shops, medical facilities, walking/bike trails, the Onkaparinga recreation reserve and with the amazing Port Noarlunga township only a couple of minutes away with a number of cafes and restaurants and

[For full version visit the website](https://www.magain.com.au/property/5-braydon-mews-noarlunga-downs-sa/8434995)

**Type** : House  
**Price** : \$ 808,000  
**Building Size** : 182 sqm  
**Land Size** : 351 sqm  
**View** : <https://www.magain.com.au/property/5-braydon-mews-noarlunga-downs-sa/8434995>



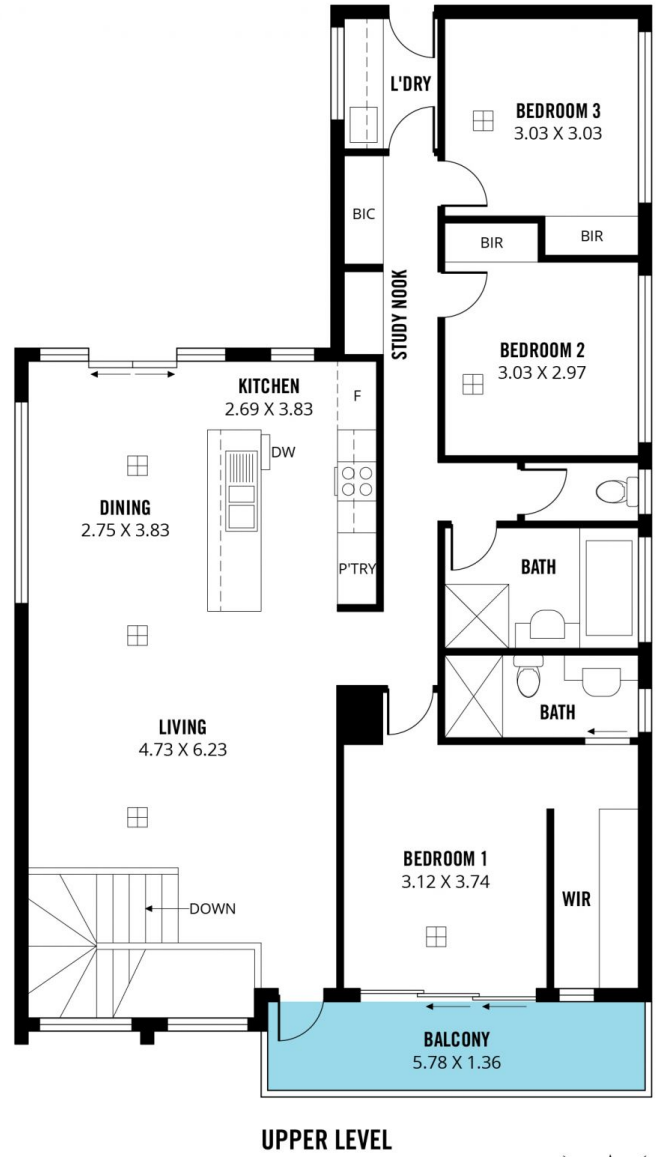
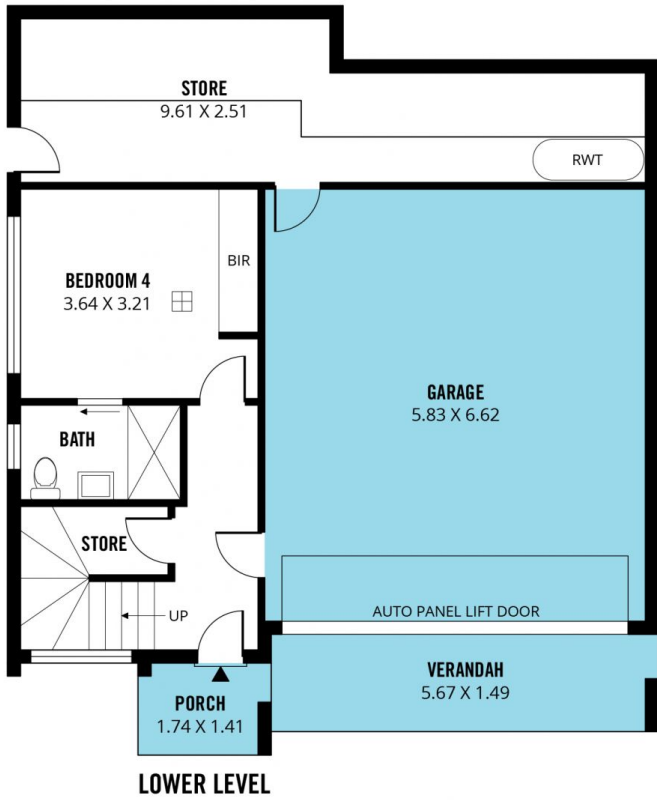
**David Hams**  
08 8366 2230



**Mitch Portlock**  
08 8366 2230

<https://www.magain.com.au>  
Magain Real Estate

Shop 60, Seaford Central Shopping Centre, Commercial Road  
08 8366 2230



Scale in metres. This drawing is for illustration purposes only. All measurements are approximate and details intended to be relied upon should be independently verified.

Produced by **The Fotobase Group**