

MAGAIN



62 Zephyr Terrace Port Willunga SA

3 1 1

Please contact David Hams from Magain Real Estate for all your property advice.

Sitting on a generously sized 697m2 (approx) allotment within walking distance to one of the worlds most picturesque beaches, this 3 bedroom home could be suitable for a wide variety of buyers and is worth some serious consideration...

Nestled on a quiet street and with easy access to a number of quality schooling options, good local shops, public transport, medical facilities and of course the famous and amazingly picturesque Port Willunga Beach and the Star of Greece restaurant and cafe. Just down the road is the recently upgraded old Aldinga township with the recently

Type : House
Building Size : 105 sqm
Land Size : 697 sqm
View : <https://www.magain.com.au/property/62-zephyr-terrace-port-willunga-sa/8434996>



David Hams
08 8366 2230

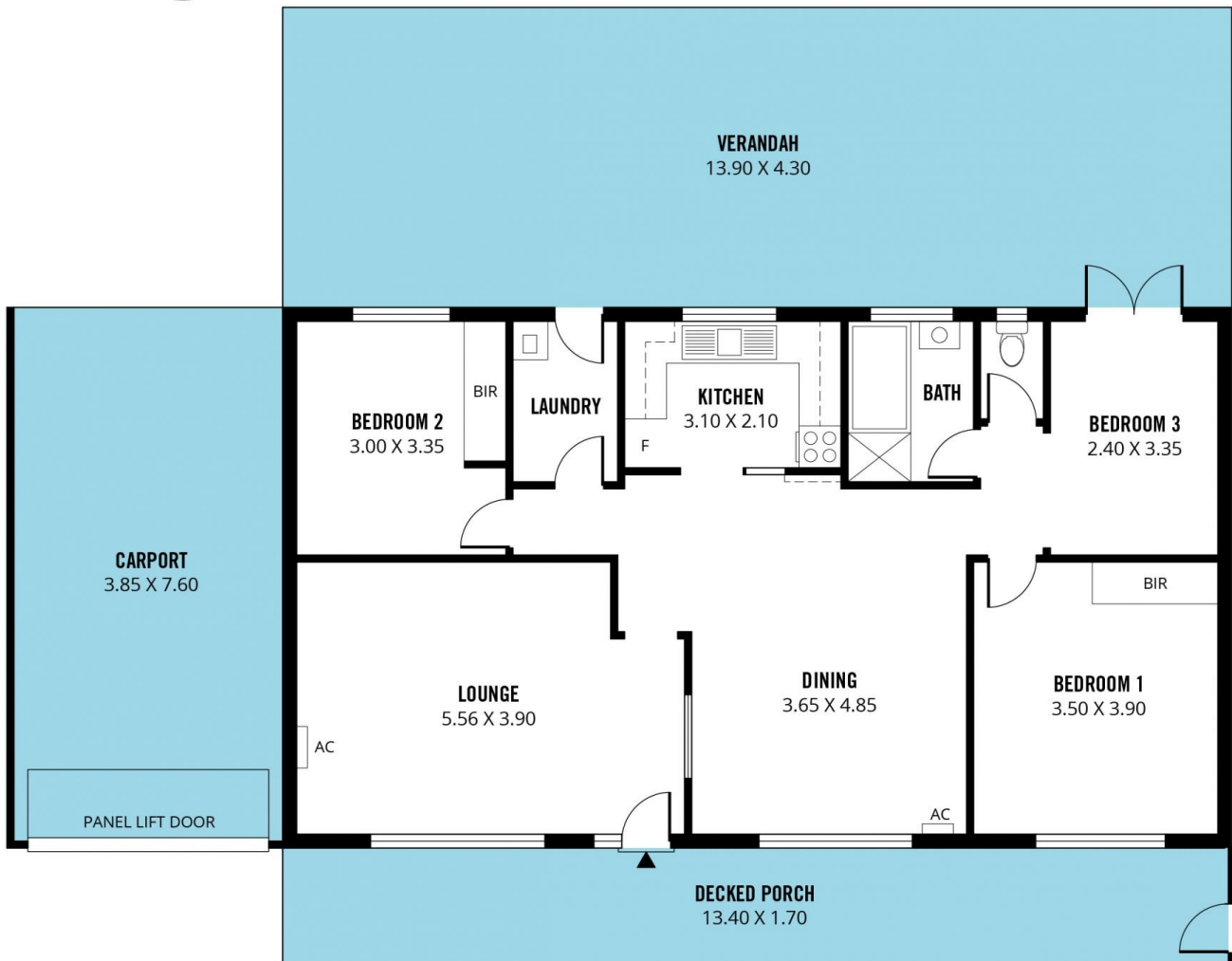
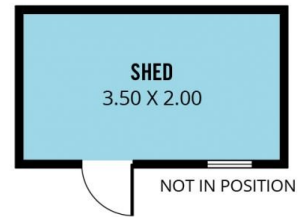
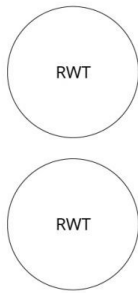


Mitch Portlock
08 8366 2230

[For full version visit the website](https://www.magain.com.au)

<https://www.magain.com.au>
Magain Real Estate

Shop 60, Seaford Central Shopping Centre, Commercial Road
08 8366 2230



Scale in metres. This drawing is for illustration purposes only. All measurements are approximate and details intended to be relied upon should be independently verified.

Produced by **The Fotobase Group**