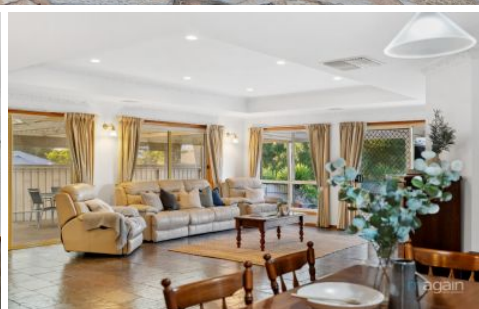


# MAGAIN



## 17 Phillip Street Moana SA

4 2 2

This impressive family home sitting on 697m<sup>2</sup> of land boasts a well-thought-out design and high-quality features, ideal for comfortable living and entertaining. From the moment you arrive, you'll be impressed by the landscaped front yard, featuring low-maintenance planting and a tidy lawn area, which enhances the home's curb appeal while ensuring ease of care. The large double garage with dual roller doors provides secure parking and drive-through access to the rear of the property.

Just minutes from the sensational Moana beach and close to important amenities such as medical facilities, quality schools and shops, public transport all while positioned on a private street in a great neighbourhood!

[For full version visit the website](https://www.magain.com.au/property/17-phillip-street-moana-sa/8435056)

**Type** : House  
**Price** : \$ 920,000  
**Building Size** : 189 sqm  
**Land Size** : 697 sqm  
**View** : <https://www.magain.com.au/property/17-phillip-street-moana-sa/8435056>



**David Hams**  
08 8366 2230



**Mitch Portlock**  
08 8366 2230

<https://www.magain.com.au>  
Magain Real Estate

Shop 60, Seaford Central Shopping Centre, Commercial Road  
08 8366 2230

