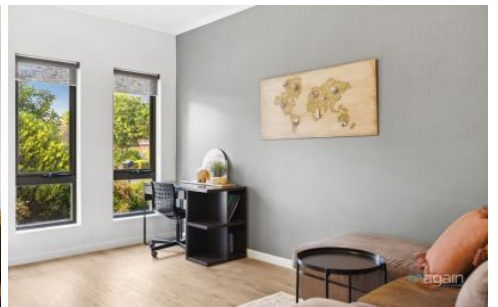


# MAGAIN



## 11 Raggatt Crescent Mitchell Park SA

3 1 1

Please contact David Hams from Magain Real Estate for all your property advice.

Step into modern living with this beautifully presented 2008-built, two-storey townhouse offering a perfect blend of space, comfort, and convenience. With its sleek rendered facade and low-maintenance design, this property is ideal for first-time buyers, families, or investors alike.

The homes location is highly desirable and offers an amazing lifestyle. Located within close proximity of impressive parks and walking trails, excellent public transport options, the recently renovated Mitchell Park Community Complex, Marion Shopping Centre and Tonsley Village, quality schooling, university and medical

**Type** : Townhouse

**Price** : \$ 775,000

**View** : <https://www.magain.com.au/property/11-raggatt-crescent-mitchell-park-sa/8435061>



**David Hams**  
08 8366 2230



**Mitch Portlock**  
08 8366 2230

[For full version visit the website](https://www.magain.com.au)

<https://www.magain.com.au>  
Magain Real Estate

Shop 60, Seaford Central Shopping Centre, Commercial Road  
08 8366 2230

# COURTYARD

