

MAGAIN



18 Waterford Circuit Seaford Rise SA

3 2 2

Please contact David Hams from Magain Real Estate for all your property advice.

This spacious home is located in an ideal setting across from a reserve with a meandering winter winding creek and a picturesque walking trail just steps away that leads to the wetlands and further on to the stunning Moana Beach. This location is perfect for those who appreciate peace and quite, a natural outlook while still being within close reach of all the necessary amenities.

Upon entering the home, you are welcomed into a spacious foyer, featuring tiled flooring that flows throughout the property. The large main bedroom, positioned at the front of the home, boasts a cozy bay window, providing lovely

[For full version visit the website](https://www.magain.com.au/property/18-waterford-circuit-seaford-rise-sa/8435064)

Type : House
Building Size : 220 sqm
Land Size : 630 sqm
View : <https://www.magain.com.au/property/18-waterford-circuit-seaford-rise-sa/8435064>



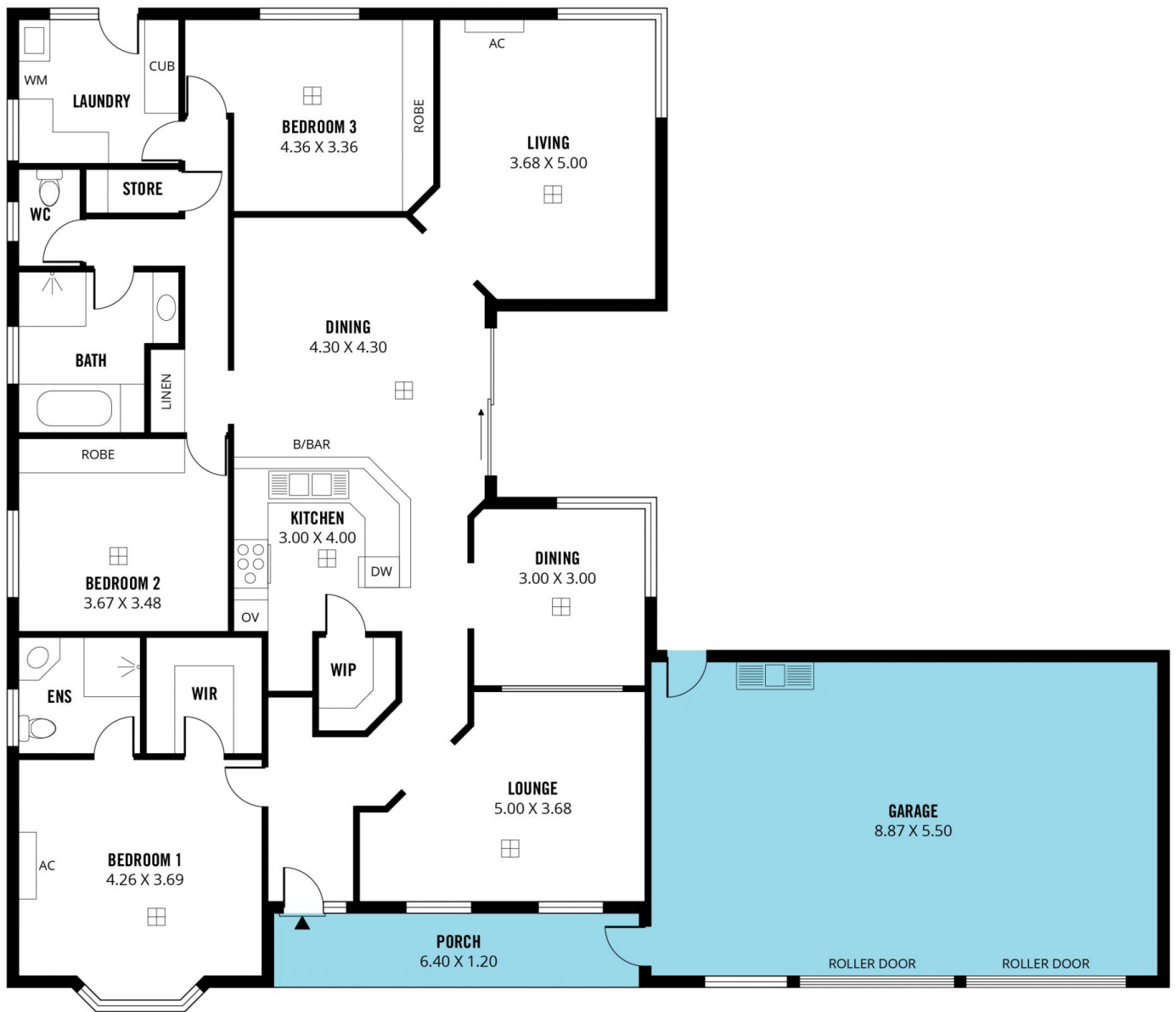
Mitch Portlock
08 8366 2230



David Hams
08 8366 2230

<https://www.magain.com.au>
Magain Real Estate

Shop 60, Seaford Central Shopping Centre, Commercial Road
08 8366 2230



Scale in metres. This drawing is for illustration purposes only. All measurements are approximate and details intended to be relied upon should be independently verified.

Produced by **The Fotobase Group**